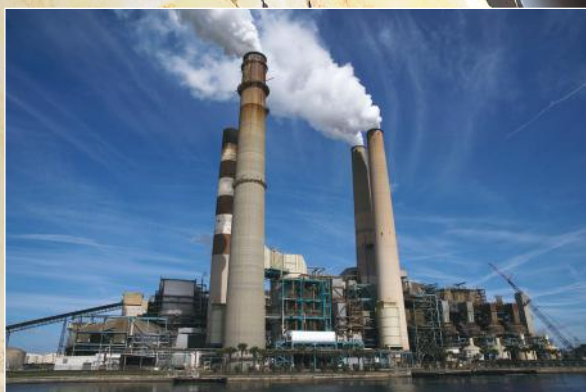


# ENERGY

## IN THE AMERICAN MIND

December 2018



## Table of Contents

|   |    |
|---|----|
| Introduction.....   | 2  |
| Reading Notes .....   | 3  |
| Executive Summary.....  | 4  |
| 1. Core Beliefs and Attitudes about Clean, Renewable Energy ..... | 6  |
| 2. Support for Energy Policies .....                              | 12 |
| 3. Energy Consumers: Beliefs, Attitudes, and Behaviors.....       | 16 |
| Appendix I: Data Tables .....                                     | 22 |
| Appendix II: Survey Method .....                                  | 57 |
| Appendix III: Sample Demographics .....                           | 58 |

## Introduction

This report is based on findings from a nationally representative survey – *Climate Change in the American Mind* – conducted by the [Yale Program on Climate Change Communication](http://climatecommunication.yale.edu) ([climatecommunication.yale.edu](http://climatecommunication.yale.edu)) and the [George Mason University Center for Climate Change Communication](http://climatechangecommunication.org) ([climatechangecommunication.org](http://climatechangecommunication.org)). Interview dates: November 28 – December 11, 2018. Interviews: 1,114 Adults (18+), 966 of whom are registered to vote. Average margin of error for both the full sample and registered voter subset: +/- 3 percentage points at the 95% confidence level. The research was funded by the 11th Hour Project, the Endeavor Foundation, the Energy Foundation, the Grantham Foundation, and the MacArthur Foundation.

### Principal Investigators:

Anthony Leiserowitz, PhD  
Yale Program on Climate Change Communication  
[anthony.leiserowitz@yale.edu](mailto:anthony.leiserowitz@yale.edu)

Edward Maibach, MPH, PhD  
George Mason University Center for Climate Change Communication  
[emaibach@gmu.edu](mailto:emaibach@gmu.edu)

Seth Rosenthal, PhD  
Yale Program on Climate Change Communication  
[seth.rosenthal@yale.edu](mailto:seth.rosenthal@yale.edu)

John Kotcher, PhD  
George Mason University Center for Climate Change Communication  
[jkotcher@gmu.edu](mailto:jkotcher@gmu.edu)

### Cite as:

Leiserowitz, A., Maibach, E., Rosenthal, S., Kotcher, J., Gustafson, A., Bergquist, P., Ballew, M., & Goldberg, M. (2018). *Energy in the American Mind, December 2018*. Yale University and George Mason University. New Haven, CT: Yale Program on Climate Change Communication. DOI: 10.17605/OSF.IO/BDQ25

## Reading notes

- Results for political segments (e.g., Republicans; liberal Democrats) are calculated using only registered voters.
- References to Republicans and Democrats throughout include respondents who initially identify as either a Republican or Democrat, as well as those who do not initially identify as Republicans or Democrats but who say they "are closer to" one party or the other (i.e., "leaners") in a follow-up question. The category "Independents" does not include any of these "leaners."
- In all tables and charts, bases specified are unweighted, but percentages are weighted.
- Weighted percentages among registered voters of each of the groups discussed in this report:
  - Democrats (total) including leaners: 48%
    - Liberal Democrats: 29%
    - Moderate/Conservative Democrats: 19%
      - (Moderate Democrats: 18%; Conservative Democrats: 1%)
  - Independents excluding leaners: 10%
  - Republicans (total) including leaners: 36%
    - Liberal/Moderate Republicans: 12%
      - (Liberal Republicans: 1%; Moderate Republicans: 11%)
    - Conservative Republicans: 23%
  - No party/Not interested in politics/Refused: 6% (included in results reported for "All Registered Voters" only)
- For tabulation purposes, percentage points are rounded to the nearest whole number. As a result, percentages in a given chart may total slightly higher or lower than 100%. Summed response categories (e.g., "strongly support" + "somewhat support") are rounded after sums are calculated (e.g., 1.3% + 1.3% = 2.6%, which, after rounding, would be reported as 1% + 1% = 3%).
- In the appendix data tables, note that: -- denotes that there were no responses in that cell, whereas 0 denotes that there were responses, but the value was less than 0.5.



## Executive Summary

Drawing on a nationally representative survey ( $N = 1,114$ ; including 966 registered voters), this report describes Americans' energy-related beliefs, attitudes, consumer behaviors, and support for different energy policies. Among other important results, we found strong bipartisan support for requiring electric utilities to use 100% clean, renewable energy, that a majority of Americans say transitioning to clean, renewable energy will benefit the economy, and that support for renewable energy research has increased by 30 percentage points among conservative Republicans over the past five years.

### **Beliefs and Attitudes about Clean, Renewable Energy**

- Most Americans consider both “clean energy” and “renewable energy” to be good things. Liberal Democrats were more likely to rate the term “clean energy” (99%) positively than “renewable energy” (83%), while conservative Republicans were more likely to rate the term “renewable energy” (63%) positively than “clean energy” (46%).
- About six in ten Americans consider coal energy (62%) to be “moderately” or more harmful to people’s health. Democrats (76%) are more likely than Republicans (57%) to say that coal is harmful. About half of Americans (53%) say nuclear energy is harmful. In contrast, almost no Americans think solar (5%) or wind energies (5%) are harmful to people’s health.
- A majority of Americans (58%) – including three in four Democrats (75%) – think policies intended to transition from fossil fuels to clean, renewable energy will improve economic growth and create new jobs. Only 18% of Americans – and 7% of Democrats – think such policies will *reduce* growth and jobs. More Republicans think such a transition will improve economic growth (39%) than reduce it (31%).
- Americans’ most important reasons to support a transition to 100% clean, renewable energy are reducing water pollution (75%), reducing air pollution (74%), and providing a better life for our children and grandchildren (72%).
- About seven in ten Americans (71%; including 87% of Democrats and 51% of Republicans) think clean energy should be a “high” or “very high” priority for the president and Congress. Very few Americans (7%, including 3% of Democrats and 11% of Republicans) think it should be a “low” priority.
- A majority of Americans (61%) – including about eight in ten Democrats (79%) – think that if all nations switch to 100% clean, renewable energy by 2050, it will be “moderately” or “very” effective at limiting global warming.

### **Support for Energy Policies**

- A large majority of registered voters (85%) – including 95% of Democrats and 71% of Republicans – support requiring utilities in their state to produce 100% of their electricity from clean, renewable sources by 2050. Nearly two in three conservative Republicans (64%) support this policy.
- About half (54%) of registered voters (72% of Democrats, 33% of Republicans) say they are more likely to vote for a political candidate who supports requiring their state’s utilities to produce electricity from 100% clean, renewable energy sources. Only 13% of registered voters say they are less likely to vote for such a candidate.

- Between 2013 and 2018, support for funding renewable energy research increased by 15 percentage points among registered voters (from 73% to 88%). This growing support was primarily driven by a large shift among conservative Republicans, whose support increased by 30 points, from 50% to 80%.
- Between 2013 and 2018, support for tax rebates for energy-efficient vehicles and solar panels increased by 12 percentage points among registered voters (from 73% to 85%).

### **Energy Consumers: Beliefs, Attitudes, and Behaviors**

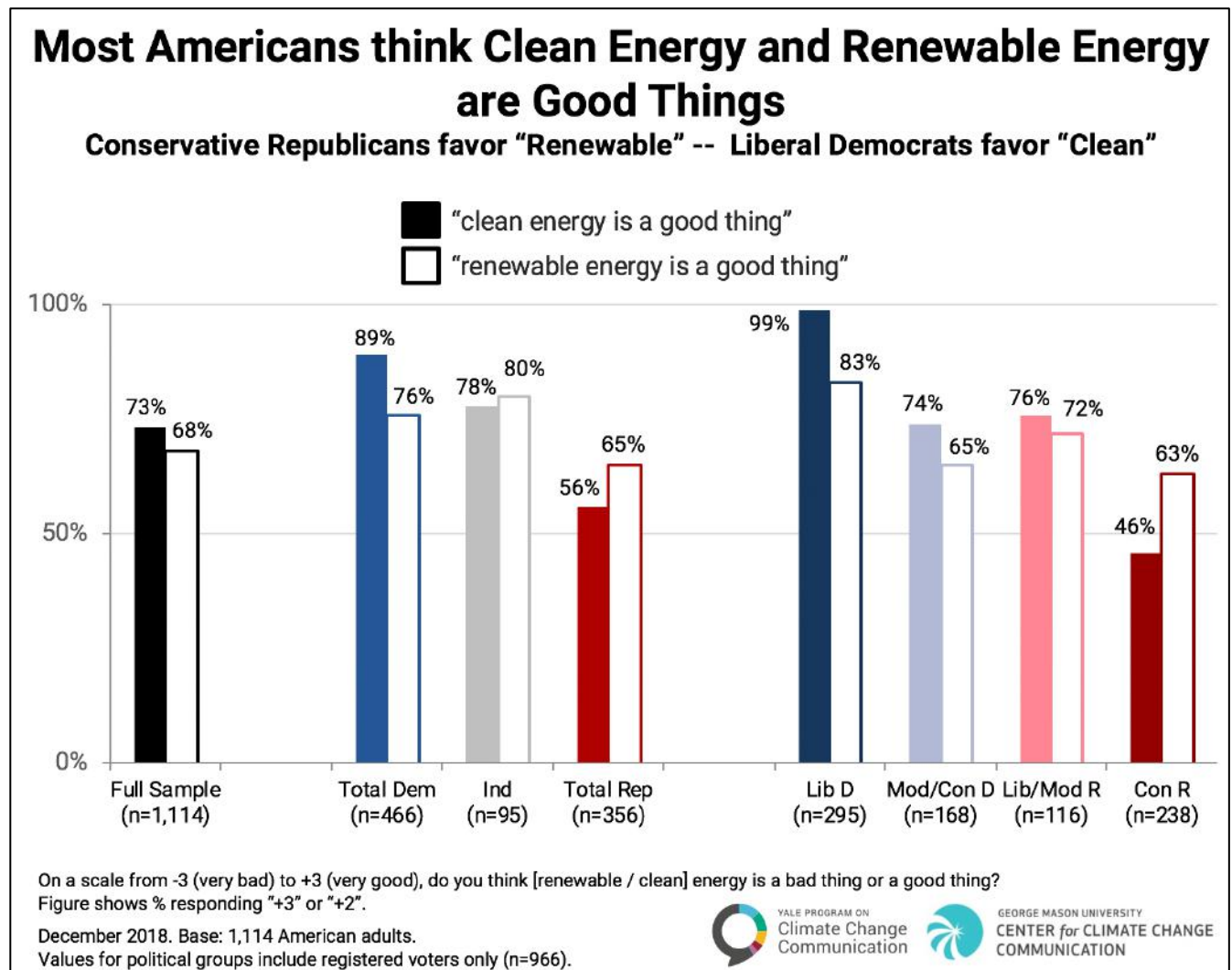
- A large majority of Americans (82%) either “don’t know” (48%) that they have the option to purchase 100% clean, renewable electricity from their local utility company or other provider, or believe they don’t have the option (34%). Half of Americans (50%; 56% of Democrats, 42% of Republicans) say they likely would purchase it if given the option. Very few Americans (5%) say they are currently purchasing 100% clean, renewable electricity.
- About half of Americans (49%; 63% of Democrats, 37% of Republicans) say they would be willing to pay more for 100% clean, renewable electricity, while the others (47%; 36% of Democrats, 60% of Republicans) say they would not pay more. On average, Americans say they would be willing to pay \$15 more per month (\$17 for Democrats, \$11 for Independents, \$9 for Republicans) for 100% clean, renewable electricity.
- Many Americans think electricity from renewable energy sources, including solar (38%) and wind (38%), is cheaper than electricity from coal; fewer think electricity from renewable energy sources costs more than coal (solar: 25%; wind: 19%). Only conservative Republicans are more likely to think solar and wind cost more than coal, not less.
- Almost half of Americans think electricity from solar (48%) and wind (45%) will get cheaper over the next decade. Conversely, few Americans (9%) think the cost of electricity from coal will decrease over the next decade (6% of Independents, 9% of Democrats, 11% of Republicans); 38% think it will cost more.
- About half of Americans (54%; 72% of Democrats, 53%, of Independents, 37% of Republicans) say they are more likely to buy goods and services from companies that have committed to using 100% clean, renewable energy. In contrast, only 5% of Americans say they are *less* likely to buy from such companies.

## 1. Core Beliefs and Attitudes about Clean, Renewable Energy

### 1.1. Most Americans think clean energy and renewable energy are good things.

Most Americans consider “clean energy” and “renewable energy” to be good things. We asked our survey participants if they thought “clean energy” (half the sample) or “renewable energy” (the other half of the sample) is a good thing or a bad thing – using a scale of -3 (“very bad”) to +3 (“very good”). Most gave ratings of “+2” or “+3” to clean energy (73%) and renewable energy (68%) – i.e., most Americans think these are good things.

The responses varied, however, across the political spectrum. Liberal Democrats were more likely to rate the term “clean energy” (99%) positively than “renewable energy” (83%), while conservative Republicans were more likely to rate the term “renewable energy” (63%) positively than “clean energy” (46%).



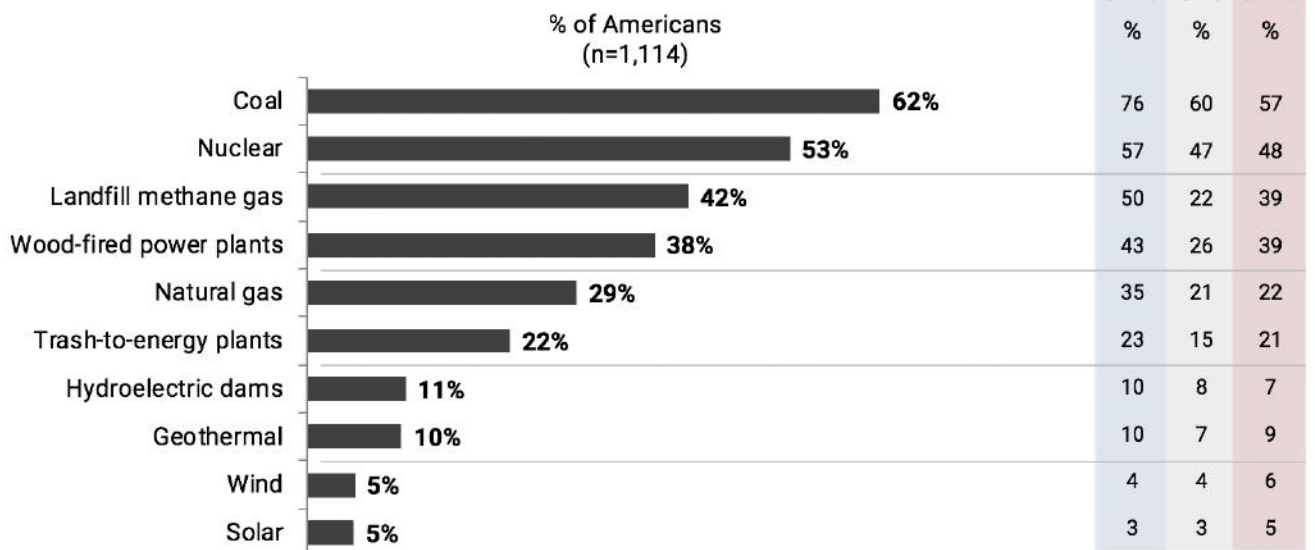
## 1.2. About six in ten Americans view coal energy as harmful to people's health.

About six in ten Americans consider coal energy (62%) to be at least “moderately” harmful to people’s health. Democrats (76%) are more likely than Republicans (57%) to say that coal is a harmful source of energy. About half of Americans (53%) say nuclear energy is harmful.

In contrast, almost no Americans see solar (5%) or wind energies (5%) as harmful to people’s health; about three in four Americans think wind and solar are “not at all harmful” (see Table, pp. 23-27). Democrats and Republicans largely agree on this point.

### About Six in Ten Americans View Coal Energy as Harmful to People's Health

- % responding “Extremely,” “Very,” or “Moderately” harmful -



To the best of your knowledge, how harmful are each of the following energy sources to people's health?

Figure shows % responding “Extremely,” “Very,” or “Moderately” harmful.

December 2018. Base: 1,114 American adults.

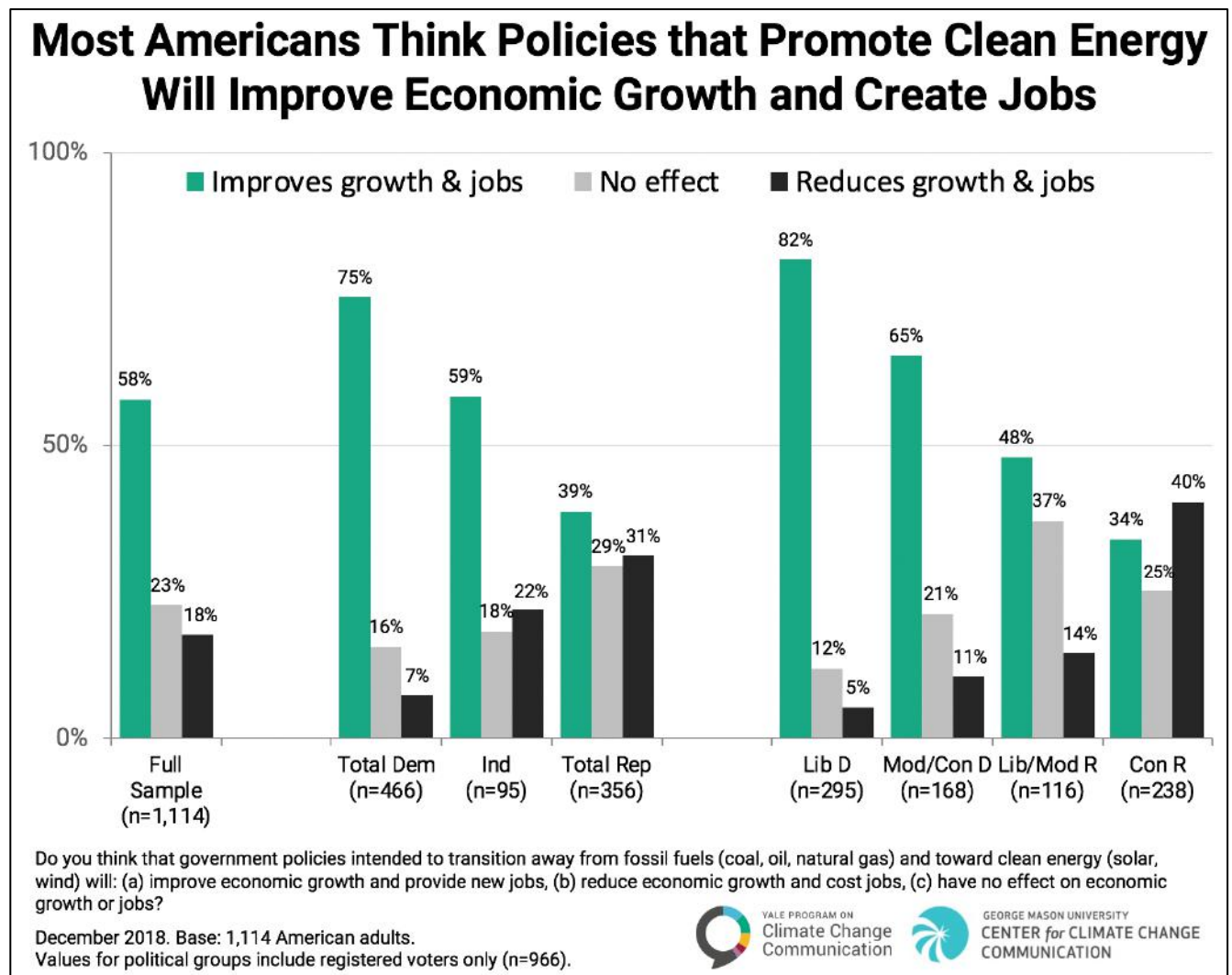
Values for political groups include registered voters only (n=966).





### 1.3. Most Americans think policies that promote clean energy will improve economic growth and create jobs.

A majority of Americans (58%) – including three in four Democrats (75%) – think policies intended to transition from fossil fuels to clean energy will improve economic growth and create new jobs. Only 18% of Americans – and 7% of Democrats – think such policies would *reduce* growth and jobs. Although Republicans are less likely than Democrats to think transitioning away from fossil fuels will improve economic growth and create new jobs, more Republicans believe such a transition will improve economic growth (39%) than will reduce it (31%), while 29% say it will have no effect one way or the other.



#### 1.4. Three in four Americans say reducing pollution is an “extremely” or “very” important reason to transition to 100% clean, renewable energy.

Survey respondents were asked how personally important they found various reasons for transitioning to 100% clean, renewable energy. The reasons most frequently cited as either “extremely” or “very” important were reducing water pollution (75%), reducing air pollution (74%), and providing a better life for our children and grandchildren (72%). Reducing global warming was selected as an “extremely” or “very” important reason by two in three Americans (66%), including a large majority of Democrats (86%) and four in ten Republicans (40%).

The largest differences between Democrats and Republicans (total D-total R) were in reducing global warming (a 46-point gap), protecting communities harmed by fossil fuels (41 points), reducing the influence of the fossil fuel industry (36 points), reducing air pollution (33 points), and saving plants/animals from extinction (32 points). By contrast, protecting God’s creation had the smallest difference between Democrats and Republicans (3 points).

### 3 in 4 Americans say Reducing Pollution is an “Extremely” or “Very” Important Reason to Transition to 100% Clean, Renewable Energy

|   | (Unweighted base) | All Reg. Voters<br>(1,114)<br>% | Democrats                |                         |                            | Ind.<br>(95)<br>% | Republicans              |                            |                         |
|---|-------------------|---------------------------------|--------------------------|-------------------------|----------------------------|-------------------|--------------------------|----------------------------|-------------------------|
|   |                   |                                 | Total Dem.<br>(466)<br>% | Lib. Dem.<br>(295)<br>% | Mod/Con Dem.<br>(168)<br>% |                   | Total Rep.<br>(356)<br>% | Lib/Mod Rep.<br>(116)<br>% | Con. Rep.<br>(238)<br>% |
| Reduce water pollution  | 75                |                                 | 87                       | 89                      | 83                         | 79                | 58                       | 65                         | 54                      |
| Reduce air pollution  | 74                |                                 | 88                       | 93                      | 81                         | 76                | 56                       | 62                         | 52                      |
| Provide a better life for our children                                      | 72                |                                 | 84                       | 89                      | 78                         | 67                | 55                       | 63                         | 51                      |
| Get energy from sources that never run out                                  | 71                |                                 | 80                       | 83                      | 76                         | 73                | 58                       | 63                         | 55                      |
| Reduce energy costs   | 71                |                                 | 77                       | 77                      | 76                         | 69                | 58                       | 62                         | 54                      |
| Improve people’s health   | 71                |                                 | 83                       | 86                      | 77                         | 73                | 53                       | 59                         | 49                      |
| Save plant/animal species from extinction                                   | 67                |                                 | 80                       | 85                      | 73                         | 66                | 49                       | 62                         | 41                      |
| Reduce global warming   | 66                |                                 | 86                       | 92                      | 78                         | 57                | 40                       | 55                         | 32                      |
| Create jobs and a stronger economy  | 66                |                                 | 75                       | 77                      | 72                         | 65                | 54                       | 61                         | 49                      |
| Make energy costs more stable   | 65                |                                 | 73                       | 75                      | 70                         | 63                | 52                       | 56                         | 50                      |
| Increase America’s energy independence                                      | 64                |                                 | 73                       | 75                      | 70                         | 71                | 56                       | 61                         | 53                      |
| Protect communities harmed by fossil fuels                                  | 60                |                                 | 78                       | 83                      | 70                         | 58                | 37                       | 40                         | 34                      |
| Reduce influence of fossil fuel industry                                    | 59                |                                 | 76                       | 80                      | 69                         | 57                | 39                       | 46                         | 35                      |
| Reduce military costs of protecting our access to foreign sources of energy | 53                |                                 | 64                       | 67                      | 58                         | 58                | 41                       | 46                         | 38                      |
| Make the U.S. a global energy leader  | 53                |                                 | 68                       | 71                      | 63                         | 46                | 40                       | 44                         | 37                      |
| Protect God’s creation  | 51                |                                 | 51                       | 47                      | 58                         | 40                | 48                       | 50                         | 45                      |

How important to you personally, if at all, are each of the following reasons to transition to 100% clean, renewable energy?

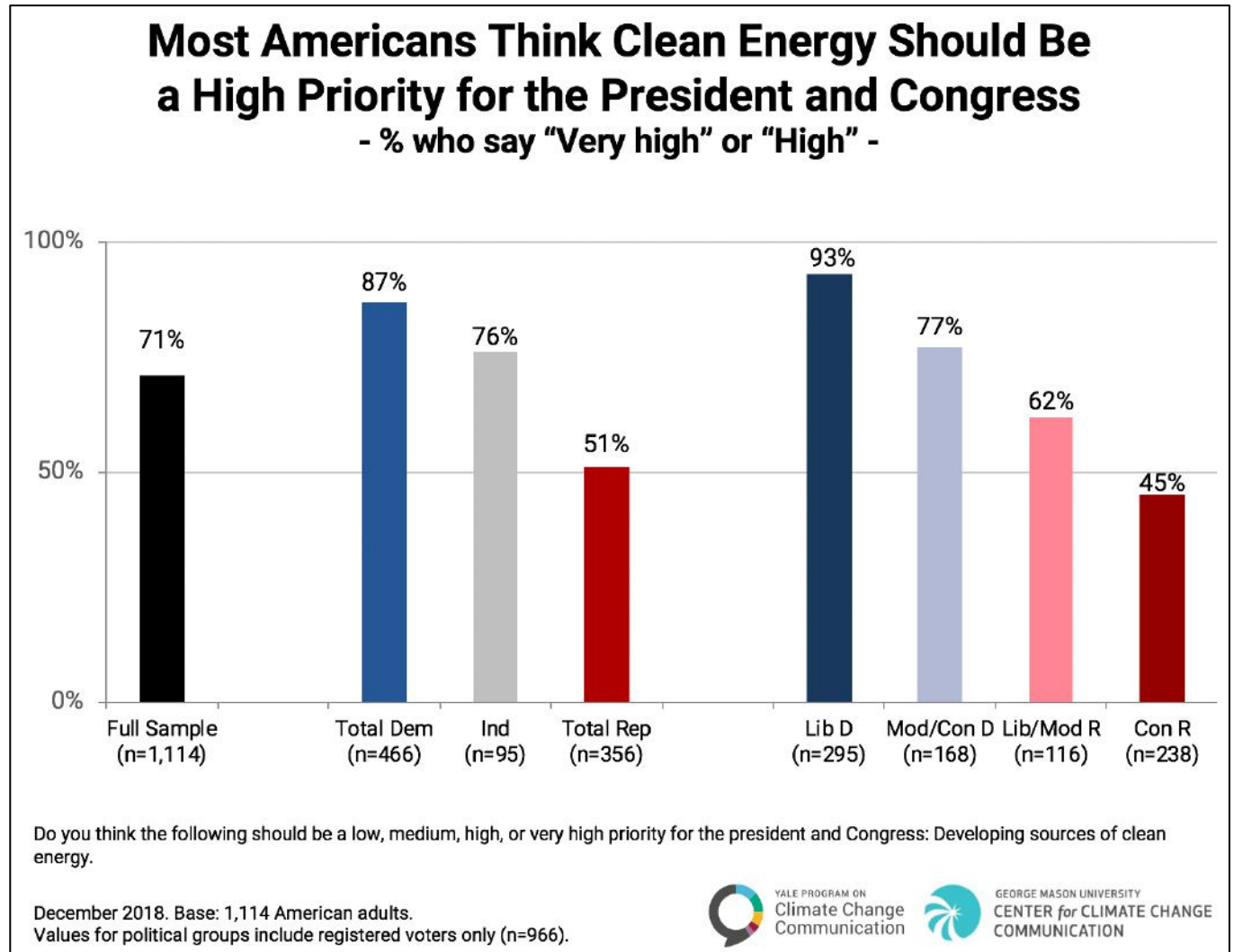
December 2018. Base: 1,114 American adults.

Values for political groups include registered voters only (n=966).



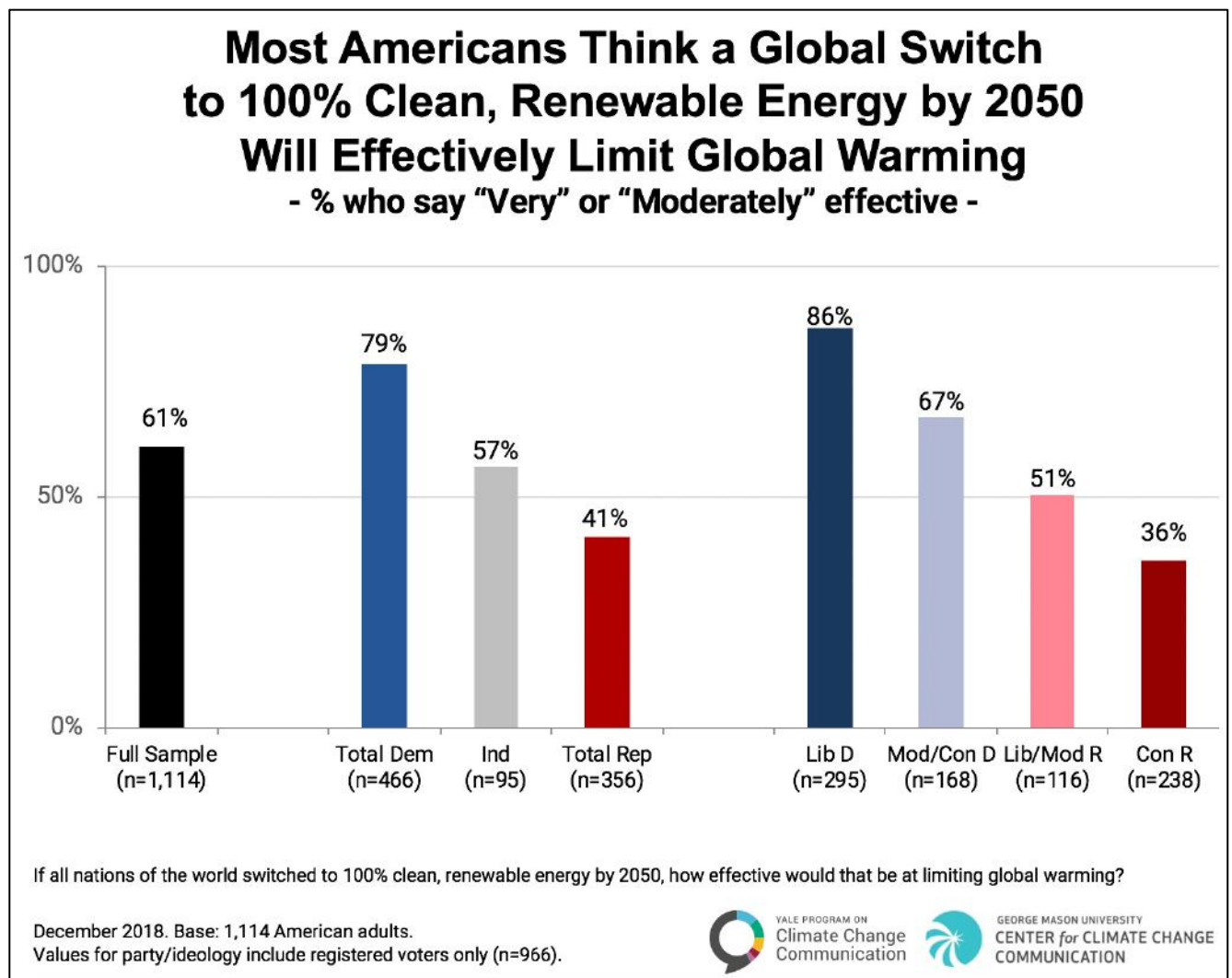
### 1.5. Most Americans think clean energy should be a high priority for the president and Congress.

About seven in ten Americans (71%; 87% of Democrats, 51% of Republicans) think clean energy should be either a “high” or “very high” priority for the president and Congress. Only 7% of Americans (3% of Democrats, 11% of Republicans) think it should be a “low” priority (see Table, p. 37).



### 1.6. Most Americans think a global switch to 100% clean, renewable energy by 2050 will effectively limit global warming.

A majority of Americans (61%) – including about eight in ten Democrats (79%) – think that if all nations switch to 100% clean, renewable energy by 2050, it will be “moderately” or “very” effective at limiting global warming. Liberal Democrats (86%) are more than twice as likely as conservative Republicans (36%) to think this.

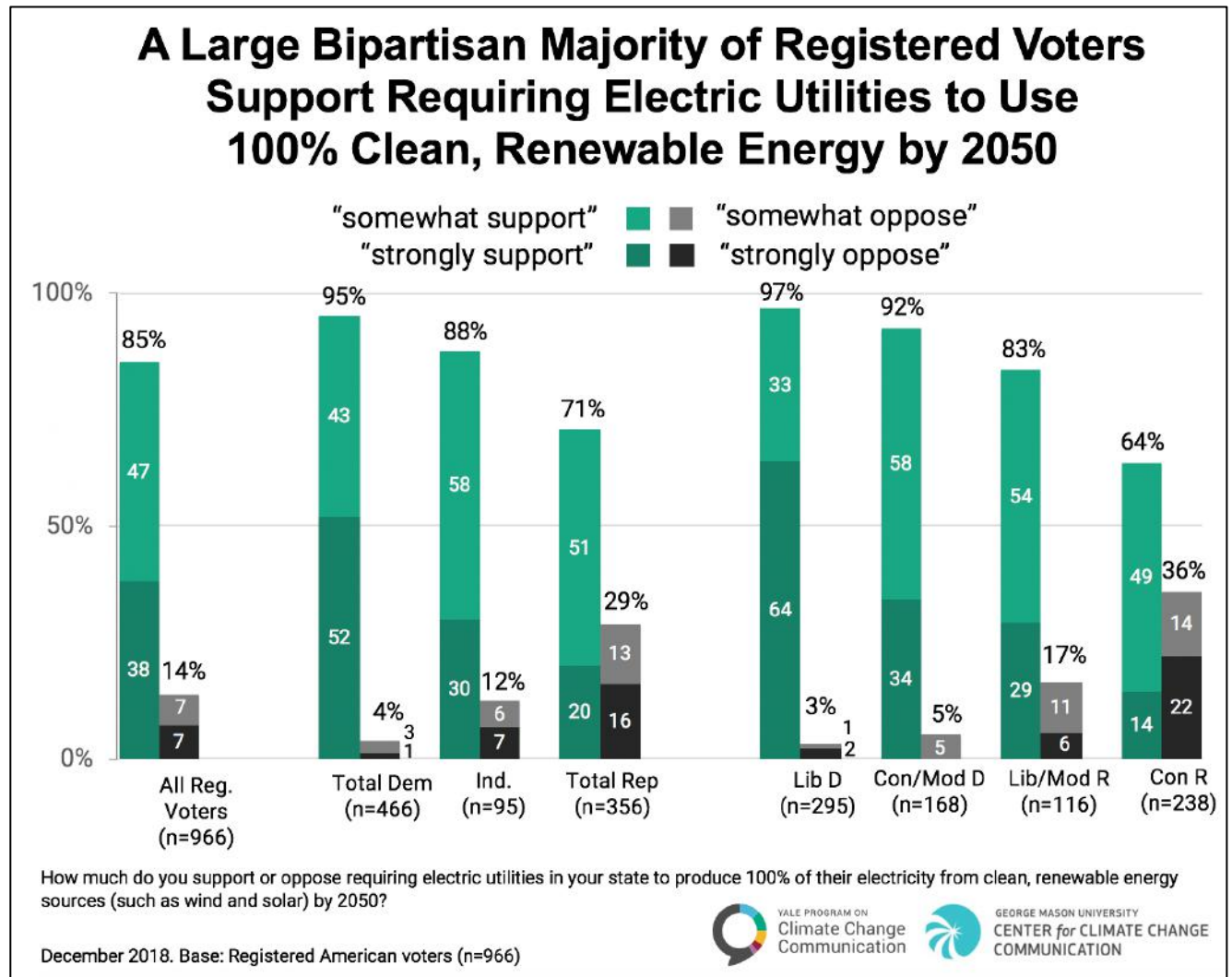




## 2. Support for Energy Policies

### 2.1. A large bipartisan majority of registered voters support requiring electric utilities to use 100% clean, renewable energy by 2050.

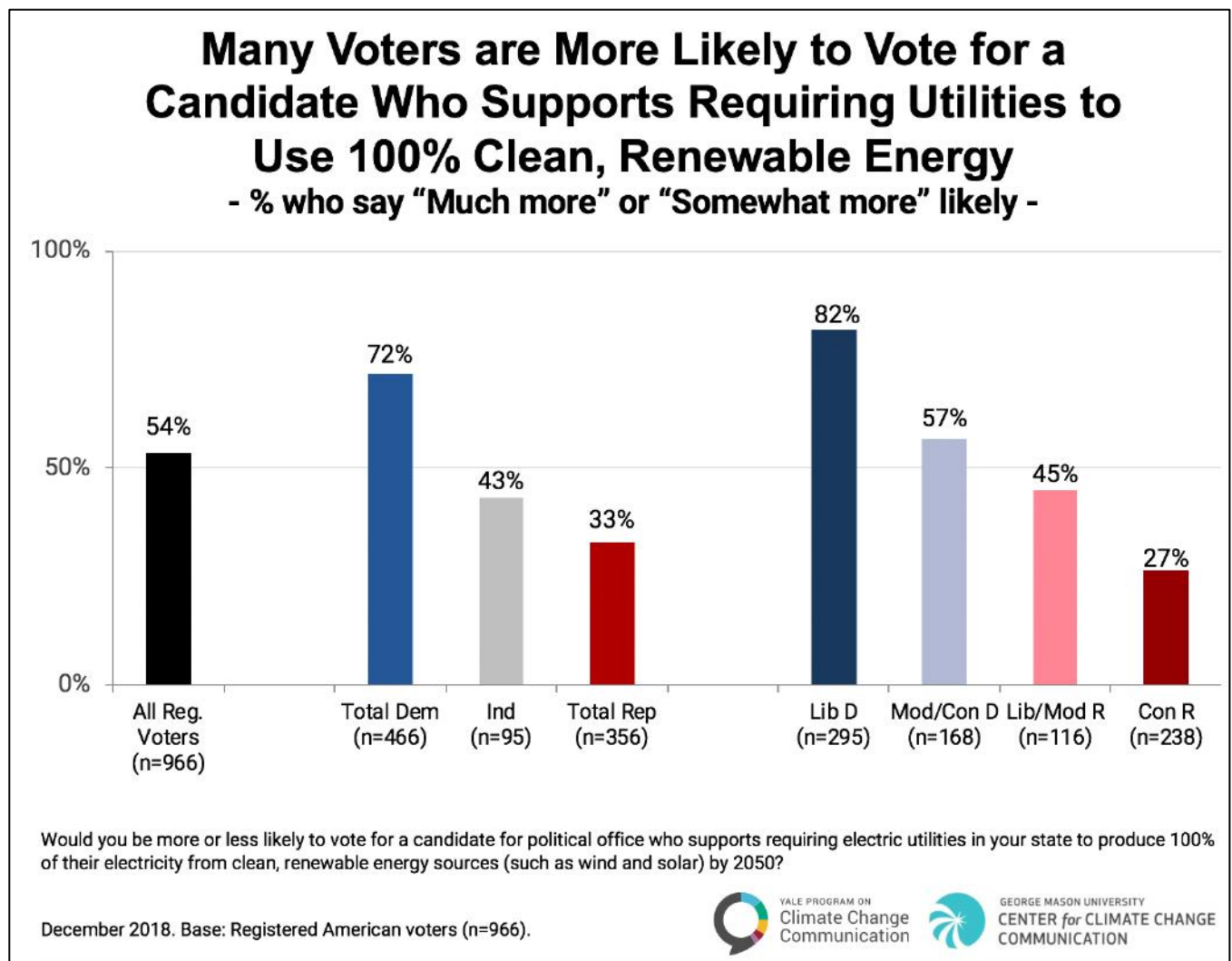
A large majority of registered voters (85%) – including 95% of Democrats and 71% of Republicans – support requiring utilities to produce 100% of their electricity from clean, renewable sources by 2050. Nearly two in three conservative Republicans (64%) support this policy.





## 2.2. Many voters are more likely to vote for a candidate who supports requiring utilities to use 100% clean, renewable energy.

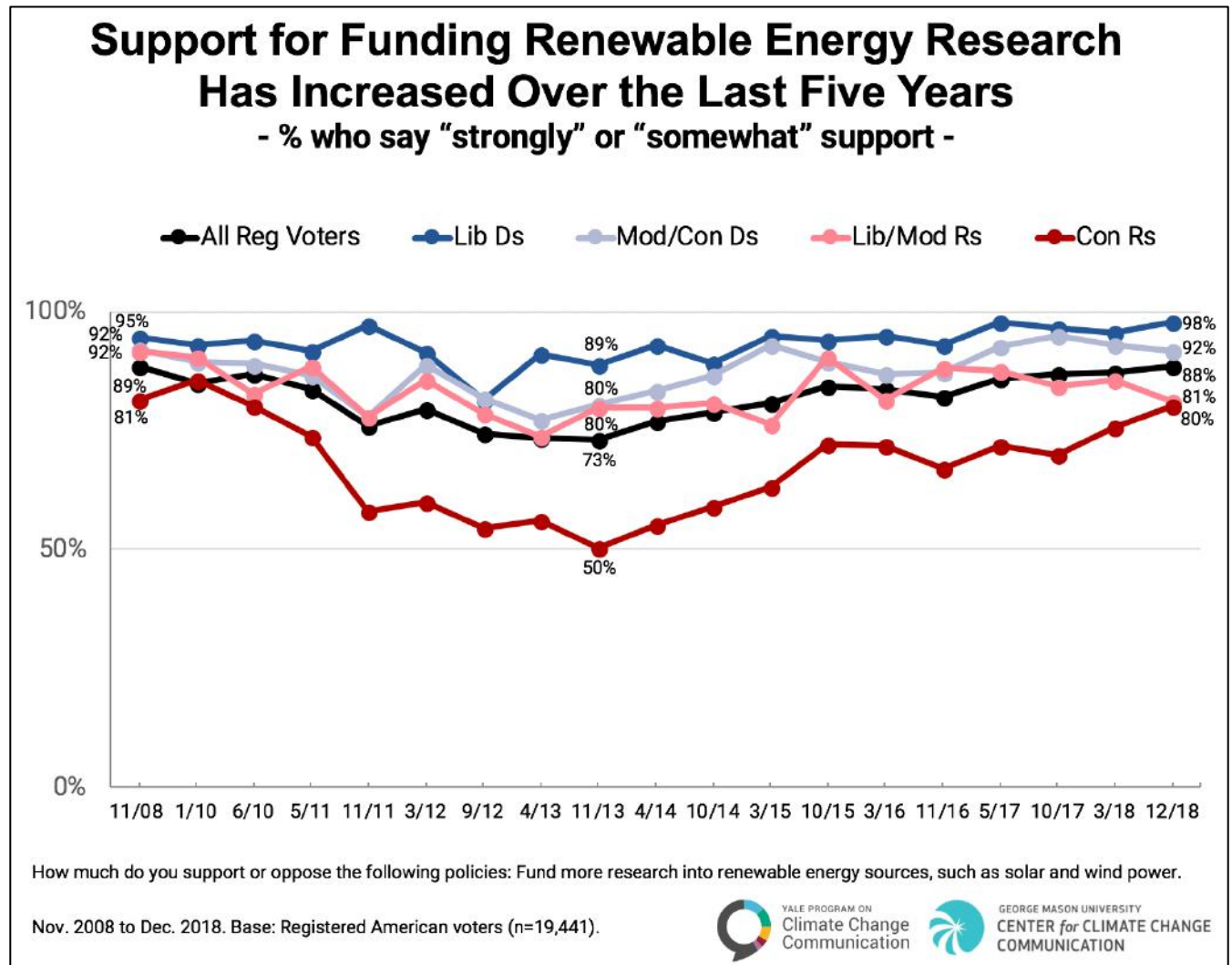
About half (54%) of registered voters (72% of Democrats, 33% of Republicans) say they are more likely to vote for a political candidate who supports requiring utilities to produce electricity from 100% clean, renewable energy sources. Only 13% of registered voters say they are less likely to vote for such a candidate (see Table, p. 37), and 32% say it makes no difference either way.



### 2.3. Support for funding renewable energy research has increased over the last five years.

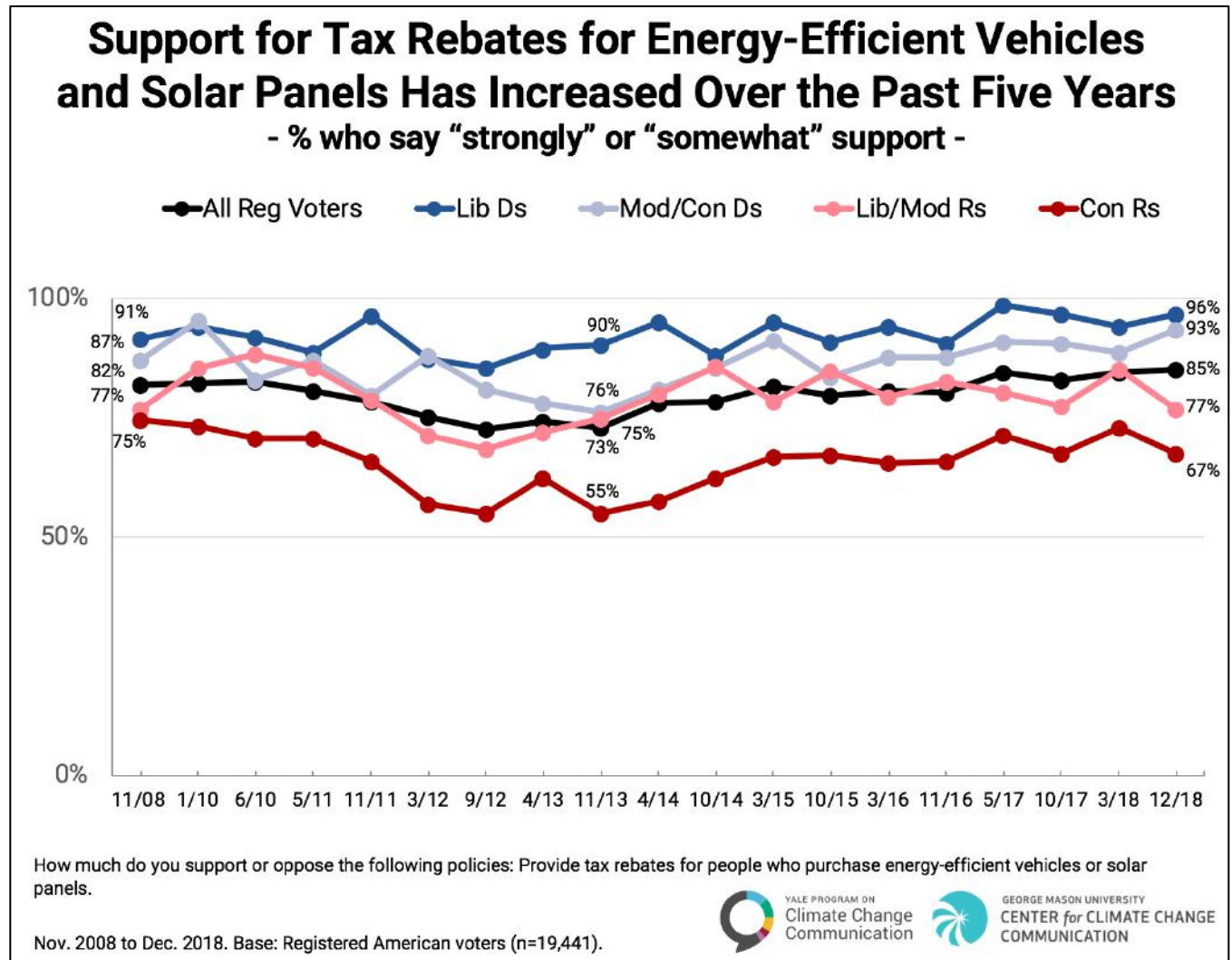
From 2013 to 2018, support for funding renewable energy research increased among registered voters by 15 percentage points (from 73% to 88%). This change was driven in large part by a major shift among conservative Republicans, whose support increased by 30 points, from 50% to 80%.

These recent highs reach the prior record highs of 2008, in which overall support for renewable energy research was at 89% (95% of liberal Democrats, 81% of conservative Republicans).



## 2.4. Support for tax rebates for energy-efficient vehicles and solar panels has increased over the past five years.

From 2013 to 2018, support for tax rebates for energy-efficient vehicles and solar panels increased among registered voters by 12 percentage points (from 73% to 85%). The increases in support were largest among moderate/conservative Democrats (+17%) and conservative Republicans (+12%).



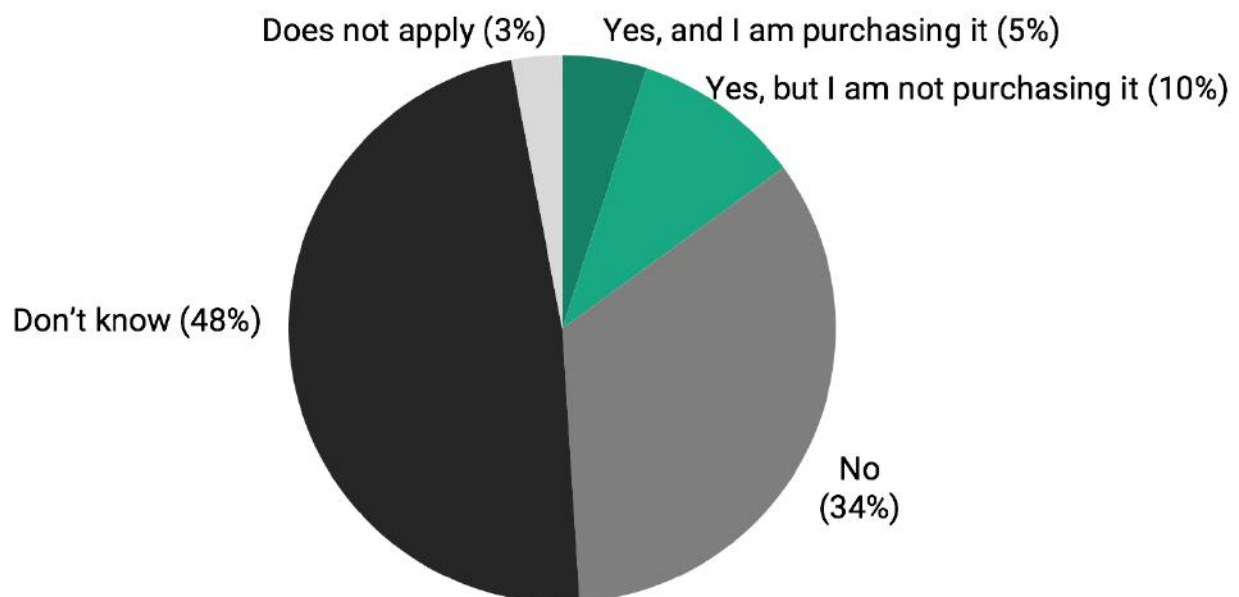
### 3. Energy Consumers: Beliefs, Attitudes, and Behaviors

#### 3.1. About half of Americans don't know if they have the option to purchase 100% clean, renewable electricity.

Nearly half of Americans (48%) don't know if they have the option to purchase 100% clean, renewable electricity from their local utility company or other electricity provider. About one in three (34%) say they don't have that option, while 10% say they have the option but aren't purchasing it. Only 5% of Americans say they are currently purchasing 100% clean, renewable electricity.

#### About Half of Americans Don't Know If They Have the Option to Purchase 100% Clean, Renewable Electricity

*Do you currently have the option to purchase 100% clean, renewable electricity?*



Do you currently have the option to purchase 100% clean, renewable electricity from your local utility company or other electricity provider?  
Are you currently purchasing 100% clean, renewable electricity from your local utility company or other electricity provider?

Dec. 2018. Base: 1,114 American adults.



YALE PROGRAM ON  
Climate Change  
Communication



GEORGE MASON UNIVERSITY  
CENTER for CLIMATE CHANGE  
COMMUNICATION



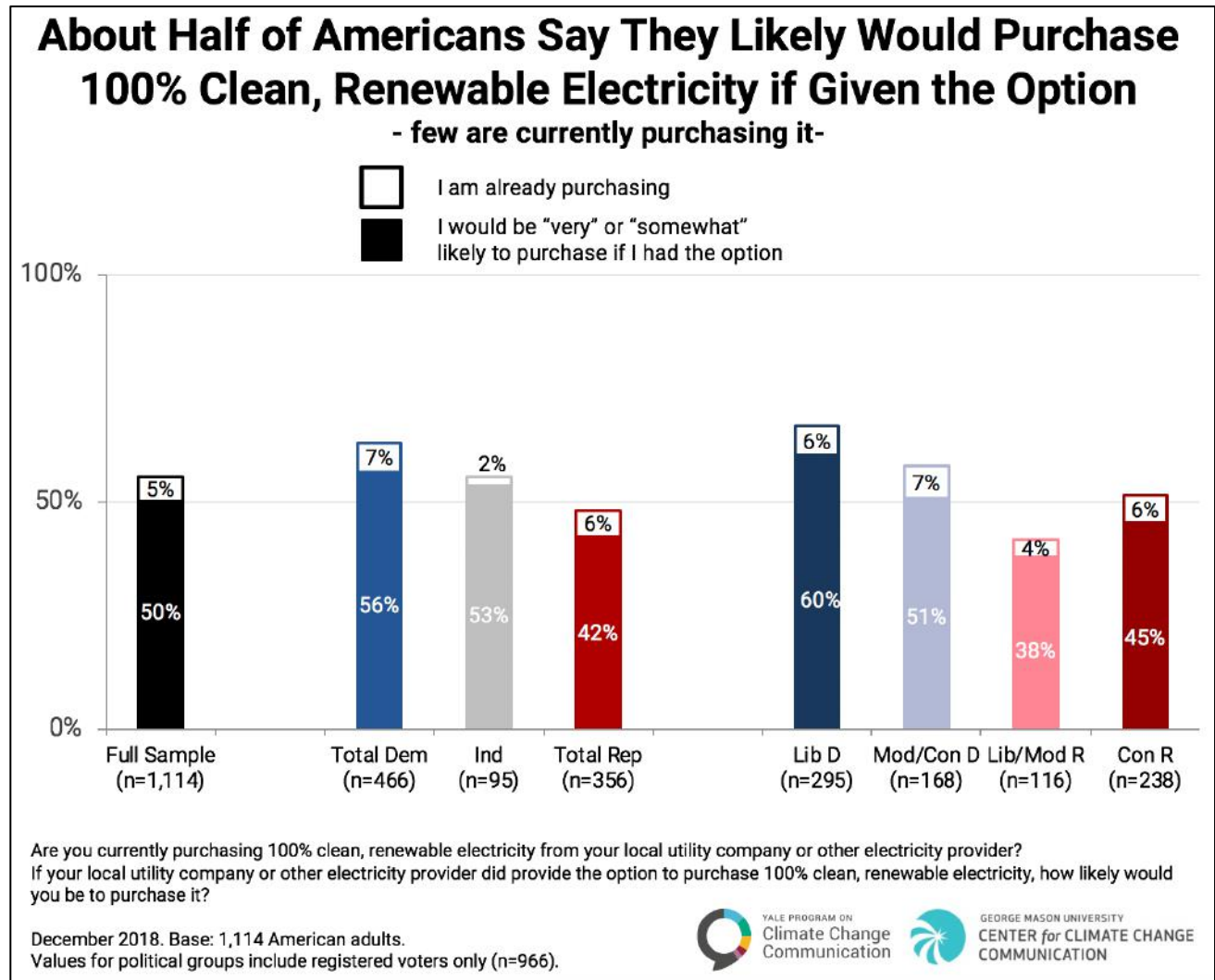
YALE PROGRAM ON  
Climate Change  
Communication



GEORGE MASON UNIVERSITY  
CENTER for CLIMATE CHANGE  
COMMUNICATION

### 3.2. About half of Americans say they likely would purchase 100% clean, renewable electricity if given the option.

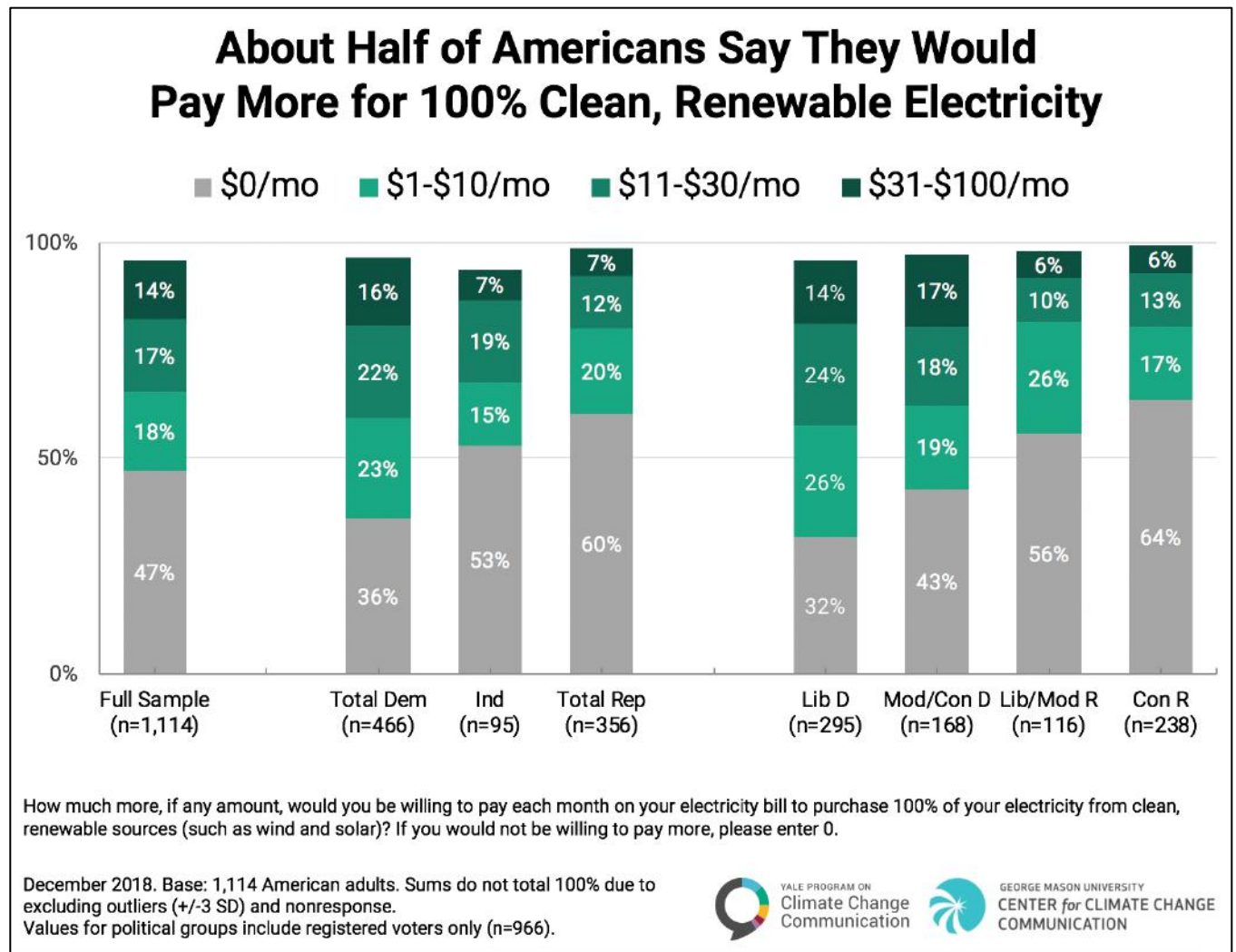
Half of Americans (50%) would purchase 100% clean, renewable energy from their local utility company, but either think they don't have that option or don't know if they do. This includes over half of Democrats (56%) and many Republicans (42%).





### 3.3. About half of Americans say they would pay more for 100% clean, renewable electricity.

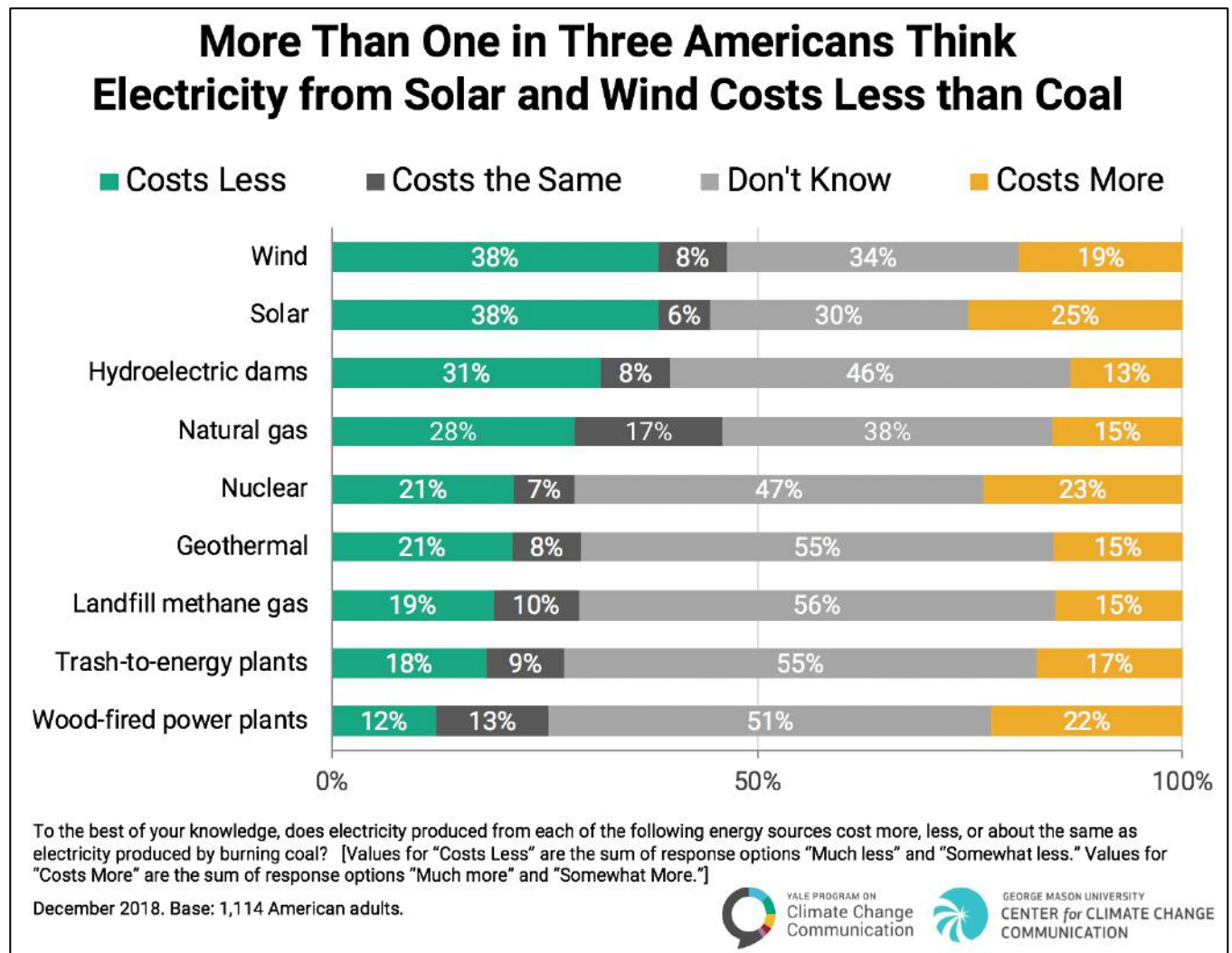
About half of Americans (49%; 63% of Democrats, 37% of Republicans) say they would pay more for 100% clean, renewable electricity, while about the same proportion (47%; 36% of Democrats, 60% of Republicans) say they would not pay more. On average, Americans say they would pay \$15 more per month (\$17 for Democrats; \$11 for Independents; \$9 for Republicans) for 100% clean, renewable electricity.



### 3.4. More than one in three Americans think electricity from solar and wind costs less than coal.

Many Americans think electricity from renewable energy sources, including solar (38%) and wind, (38%) is less expensive than electricity from coal; fewer think renewable energy sources cost more than coal (solar: 25%; wind: 19%). Many say they don't know if renewable energy sources cost less or more than coal (solar: 30%; wind: 34%).

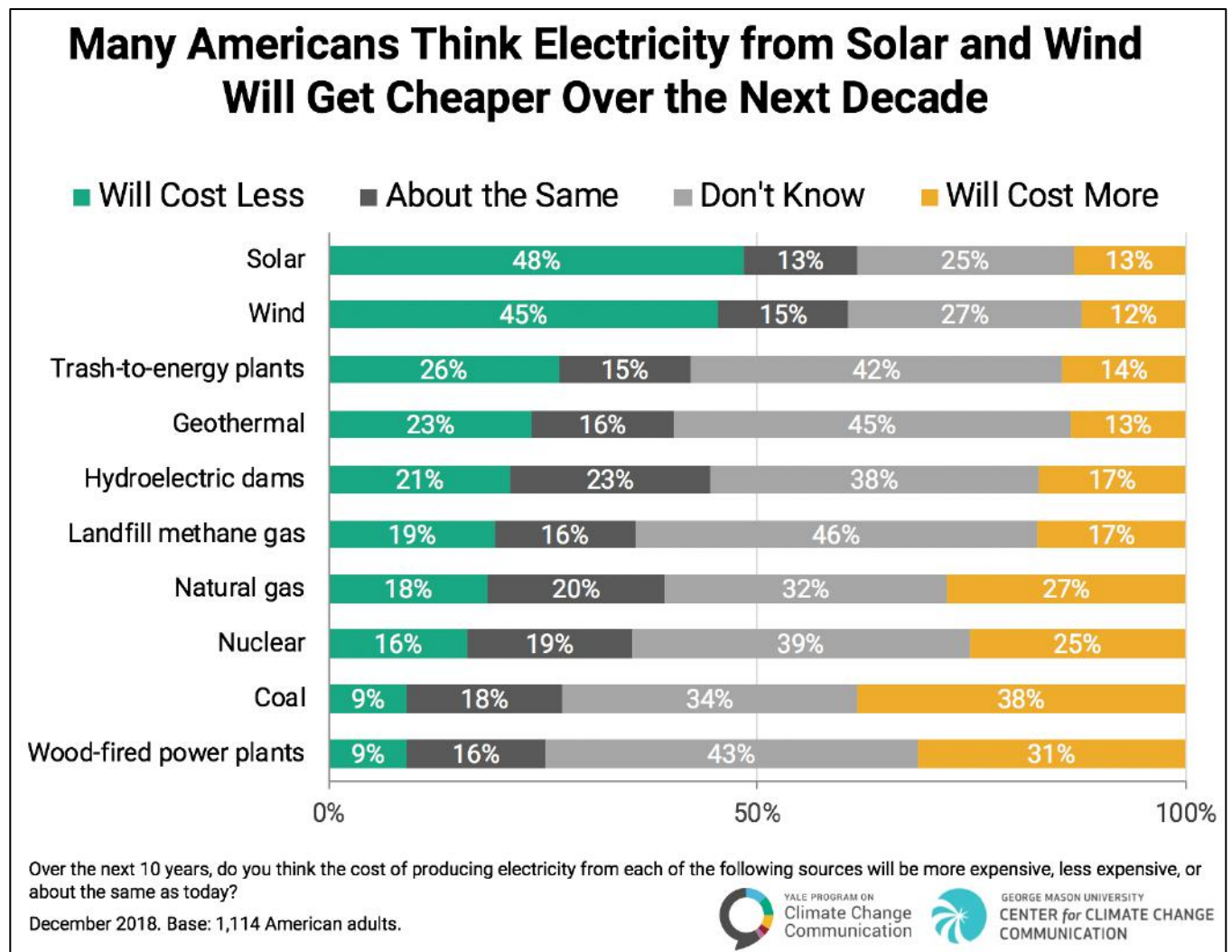
Democrats (48%) are more likely than Independents (38%) or Republicans (29%) to think that electricity from solar costs less than coal (see Table, pp. 46-50) – a pattern that is similar to perceptions of the costs of electricity from wind (49% of Democrats, 32% of Independents, 31% of Republicans). Conservative Republicans are the only political segment in which those who think solar and wind cost more than coal outnumber those who think solar and wind cost less than coal. Opinions about the cost of coal compared to nuclear, natural gas, geothermal, and hydroelectric dams are relatively stable across political segments, with large percentages of Americans saying they don't know.



### 3.5. Many Americans think electricity from solar and wind will get cheaper over the next decade.

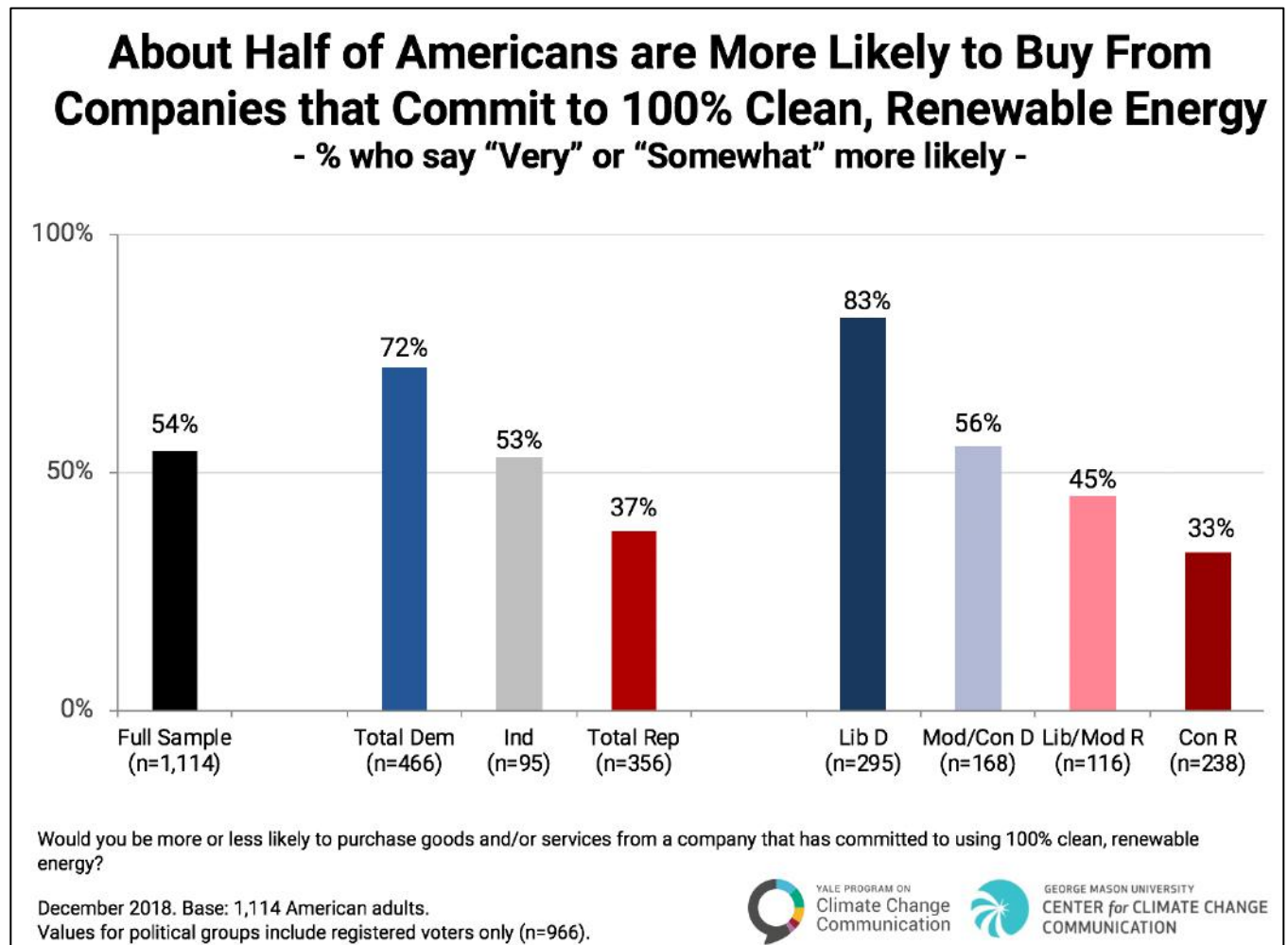
Almost half of Americans think the cost of electricity from solar (48%) and wind (45%) will decrease over the next 10 years. Many Democrats think solar (60%) and wind (56%) will be less expensive in 10 years, while fewer Republicans think so (solar, 44%; wind, 36%).

Conversely, few Americans think the cost of electricity from coal will decrease over the next decade (6% of Independents, 9% of Democrats, 11% of Republicans), while 38% think it will cost more (see Table, pp. 51-56). About three in ten Americans (34%) say they don't know if the cost of coal will increase, decrease, or stay the same – a common response for all energy sources.



### 3.6. About half of Americans are more likely to buy from companies that commit to 100% clean, renewable energy.

About half of Americans (54%; 72% of Democrats, 53% of Independents, 37% of Republicans) say they are more likely to buy goods and services from companies that have committed to using 100% clean, renewable energy. In contrast, only 5% of Americans say they are *less* likely to buy from such companies (2% of Democrats, 5% of Independents, 7% of Republicans; see Table, p. 56).



## Appendix I: Data Tables

**On a scale from -3 (very bad) to +3 (very good), do you think renewable energy is a bad thing or a good thing?**

|                                 |             | Democrats |           |             |           | Republicans |             |           |
|---------------------------------|-------------|-----------|-----------|-------------|-----------|-------------|-------------|-----------|
|                                 | Full Sample | Total Dem | Lib Dem   | Mod/Con Dem | Ind/Other | Total Rep   | Mod/Lib Rep | Con Rep   |
| Unweighted Base                 | 556         | 249       | 155       | 95          | 58        | 186         | 63          | 121       |
|                                 | %           | %         | %         | %           | %         | %           | %           | %         |
| <b>+3 or +2</b>                 | <b>68</b>   | <b>76</b> | <b>83</b> | <b>65</b>   | <b>80</b> | <b>65</b>   | <b>72</b>   | <b>63</b> |
| Very good (+3)                  | 46          | 61        | 70        | 48          | 51        | 36          | 37          | 37        |
| +2                              | 22          | 15        | 14        | 17          | 29        | 29          | 35          | 26        |
| +1                              | 13          | 10        | 8         | 14          | 3         | 21          | 14          | 22        |
| -1                              | 3           | 2         | 2         | 2           | 0         | 5           | 1           | 7         |
| -2                              | 0           | --        | --        | --          | --        | 1           | --          | 2         |
| Very bad (-3)                   | 0           | --        | --        | --          | --        | 0           | --          | 1         |
| Never heard of renewable energy | 14          | 11        | 5         | 18          | 17        | 7           | 13          | 5         |

**On a scale from -3 (very bad) to +3 (very good), do you think clean energy is a bad thing or a good thing?**

|                             |             | Democrats |           |             |           | Republicans |             |           |
|-----------------------------|-------------|-----------|-----------|-------------|-----------|-------------|-------------|-----------|
|                             | Full Sample | Total Dem | Lib Dem   | Mod/Con Dem | Ind/Other | Total Rep   | Mod/Lib Rep | Con Rep   |
| Unweighted Base             | 558         | 259       | 161       | 97          | 56        | 203         | 74          | 129       |
|                             | %           | %         | %         | %           | %         | %           | %           | %         |
| <b>+3 or +2</b>             | <b>73</b>   | <b>89</b> | <b>99</b> | <b>74</b>   | <b>78</b> | <b>56</b>   | <b>76</b>   | <b>46</b> |
| Very good (+3)              | 52          | 72        | 86        | 47          | 63        | 27          | 37          | 23        |
| +2                          | 21          | 18        | 13        | 26          | 15        | 29          | 39          | 23        |
| +1                          | 15          | 4         | 1         | 8           | 13        | 34          | 20          | 41        |
| -1                          | 2           | 1         | --        | 3           | 3         | 2           | 2           | 3         |
| -2                          | --          | --        | --        | --          | --        | --          | --          | --        |
| Very bad (-3)               | 1           | 1         | --        | 3           | 3         | --          | --          | --        |
| Never heard of clean energy | 9           | 5         | --        | 12          | 2         | 7           | 2           | 10        |



**To the best of your knowledge, how harmful are each of the following energy sources to people's health?**

### Solar

|  |             | Democrats |          |              |            | Republicans |              |          |
|--|-------------|-----------|----------|--------------|------------|-------------|--------------|----------|
|  | Full Sample | Total Dem | Lib Dem  | Mod/ Con Dem | Ind/ Other | Total Rep   | Mod/ Lib Rep | Con Rep  |
| Unweighted Base                          | 1,114       | 466       | 295      | 168          | 95         | 356         | 116          | 238      |
|  | %           | %         | %        | %            | %          | %           | %            | %        |
| <b>Very/Extremely/Moderately harmful</b> | <b>5</b>    | <b>3</b>  | <b>2</b> | <b>5</b>     | <b>3</b>   | <b>5</b>    | <b>2</b>     | <b>6</b> |
| Extremely harmful                        | 1           | 0         | --       | 1            | 1          | 1           | --           | 1        |
| Very harmful                             | 1           | 0         | 0        | 1            | --         | 1           | --           | 1        |
| Moderately harmful                       | 3           | 2         | 1        | 3            | 3          | 3           | 2            | 4        |
| A little harmful                         | 9           | 8         | 6        | 11           | 10         | 12          | 11           | 11       |
| Not at all harmful                       | 66          | 74        | 81       | 64           | 62         | 65          | 60           | 68       |
| Don't know                               | 19          | 15        | 11       | 20           | 22         | 18          | 26           | 15       |

### Wind

|  |             | Democrats |          |              |            | Republicans |              |          |
|--|-------------|-----------|----------|--------------|------------|-------------|--------------|----------|
|  | Full Sample | Total Dem | Lib Dem  | Mod/ Con Dem | Ind/ Other | Total Rep   | Mod/ Lib Rep | Con Rep  |
| Unweighted Base                          | 1,114       | 466       | 295      | 168          | 95         | 356         | 116          | 238      |
|  | %           | %         | %        | %            | %          | %           | %            | %        |
| <b>Very/Extremely/Moderately harmful</b> | <b>5</b>    | <b>4</b>  | <b>2</b> | <b>6</b>     | <b>4</b>   | <b>6</b>    | <b>3</b>     | <b>8</b> |
| Extremely harmful                        | 1           | 0         | --       | 1            | 1          | 1           | --           | 2        |
| Very harmful                             | 1           | 0         | 0        | 0            | --         | 2           | 2            | 2        |
| Moderately harmful                       | 4           | 3         | 2        | 5            | 3          | 4           | 1            | 5        |
| A little harmful                         | 9           | 9         | 6        | 14           | 11         | 11          | 11           | 11       |
| Not at all harmful                       | 66          | 73        | 81       | 60           | 65         | 64          | 57           | 67       |
| Don't know                               | 18          | 13        | 10       | 17           | 18         | 18          | 28           | 14       |

**To the best of your knowledge, how harmful are each of the following energy sources to people's health?  
(Cont'd.)**

### Geothermal

|  |             | Democrats |           |              |            | Republicans |              |           |
|--|-------------|-----------|-----------|--------------|------------|-------------|--------------|-----------|
|  | Full Sample | Total Dem | Lib Dem   | Mod/ Con Dem | Ind/ Other | Total Rep   | Mod/ Lib Rep | Con Rep   |
| Unweighted Base                          | 1,114       | 466       | 295       | 168          | 95         | 356         | 116          | 238       |
|  | %           | %         | %         | %            | %          | %           | %            | %         |
| <b>Very/Extremely/Moderately harmful</b> | <b>10</b>   | <b>10</b> | <b>10</b> | <b>10</b>    | <b>7</b>   | <b>9</b>    | <b>3</b>     | <b>10</b> |
| Extremely harmful                        | 1           | 1         | 1         | 1            | 2          | 1           | --           | 1         |
| Very harmful                             | 2           | 2         | 1         | 4            | --         | 1           | 2            | 1         |
| Moderately harmful                       | 7           | 7         | 8         | 5            | 4          | 7           | 2            | 8         |
| A little harmful                         | 12          | 11        | 10        | 14           | 8          | 15          | 19           | 13        |
| Not at all harmful                       | 32          | 37        | 43        | 29           | 39         | 34          | 28           | 38        |
| Don't know                               | 45          | 41        | 37        | 46           | 43         | 41          | 49           | 38        |

### Natural gas

|  |             | Democrats |           |              |            | Republicans |              |           |
|--|-------------|-----------|-----------|--------------|------------|-------------|--------------|-----------|
|  | Full Sample | Total Dem | Lib Dem   | Mod/ Con Dem | Ind/ Other | Total Rep   | Mod/ Lib Rep | Con Rep   |
| Unweighted Base                          | 1,114       | 466       | 295       | 168          | 95         | 356         | 116          | 238       |
|  | %           | %         | %         | %            | %          | %           | %            | %         |
| <b>Very/Extremely/Moderately harmful</b> | <b>29</b>   | <b>35</b> | <b>36</b> | <b>34</b>    | <b>21</b>  | <b>22</b>   | <b>23</b>    | <b>21</b> |
| Extremely harmful                        | 4           | 3         | 2         | 5            | 2          | 2           | 1            | 1         |
| Very harmful                             | 5           | 6         | 6         | 6            | 3          | 4           | 3            | 4         |
| Moderately harmful                       | 21          | 26        | 28        | 22           | 16         | 16          | 19           | 15        |
| A little harmful                         | 31          | 33        | 34        | 31           | 30         | 36          | 31           | 38        |
| Not at all harmful                       | 14          | 10        | 10        | 11           | 16         | 20          | 15           | 23        |
| Don't know                               | 24          | 21        | 20        | 22           | 30         | 21          | 29           | 17        |

**To the best of your knowledge, how harmful are each of the following energy sources to people's health?  
(Cont'd.)**

### Nuclear

|  |             | Democrats |           |              |            | Republicans |              |           |
|--|-------------|-----------|-----------|--------------|------------|-------------|--------------|-----------|
|  | Full Sample | Total Dem | Lib Dem   | Mod/ Con Dem | Ind/ Other | Total Rep   | Mod/ Lib Rep | Con Rep   |
| Unweighted Base                          | 1,114       | 466       | 295       | 168          | 95         | 356         | 116          | 238       |
|  | %           | %         | %         | %            | %          | %           | %            | %         |
| <b>Very/Extremely/Moderately harmful</b> | <b>53</b>   | <b>57</b> | <b>54</b> | <b>61</b>    | <b>47</b>  | <b>48</b>   | <b>47</b>    | <b>48</b> |
| Extremely harmful                        | 22          | 22        | 22        | 23           | 18         | 16          | 14           | 17        |
| Very harmful                             | 14          | 15        | 13        | 18           | 15         | 12          | 12           | 11        |
| Moderately harmful                       | 17          | 19        | 19        | 20           | 14         | 20          | 20           | 20        |
| A little harmful                         | 13          | 16        | 20        | 10           | 8          | 13          | 11           | 14        |
| Not at all harmful                       | 10          | 8         | 9         | 6            | 14         | 17          | 12           | 20        |
| Don't know                               | 23          | 18        | 16        | 21           | 28         | 21          | 29           | 18        |

### Hydroelectric dams

|  |             | Democrats |           |              |            | Republicans |              |          |
|--|-------------|-----------|-----------|--------------|------------|-------------|--------------|----------|
|  | Full Sample | Total Dem | Lib Dem   | Mod/ Con Dem | Ind/ Other | Total Rep   | Mod/ Lib Rep | Con Rep  |
| Unweighted Base                          | 1,114       | 466       | 295       | 168          | 95         | 356         | 116          | 238      |
|  | %           | %         | %         | %            | %          | %           | %            | %        |
| <b>Very/Extremely/Moderately harmful</b> | <b>11</b>   | <b>10</b> | <b>10</b> | <b>11</b>    | <b>8</b>   | <b>7</b>    | <b>7</b>     | <b>6</b> |
| Extremely harmful                        | 2           | 2         | 0         | 4            | 1          | 1           | --           | --       |
| Very harmful                             | 2           | 2         | 1         | 3            | --         | --          | --           | --       |
| Moderately harmful                       | 7           | 7         | 8         | 4            | 7          | 6           | 7            | 6        |
| A little harmful                         | 14          | 14        | 15        | 13           | 13         | 16          | 15           | 17       |
| Not at all harmful                       | 43          | 48        | 54        | 39           | 38         | 48          | 42           | 51       |
| Don't know                               | 32          | 27        | 21        | 34           | 37         | 29          | 35           | 26       |

**To the best of your knowledge, how harmful are each of the following energy sources to people's health?  
(Cont'd.)**

**Methane gas emitted by landfills**

|  |             | Democrats |           |              |            | Republicans |              |           |
|--|-------------|-----------|-----------|--------------|------------|-------------|--------------|-----------|
|  | Full Sample | Total Dem | Lib Dem   | Mod/ Con Dem | Ind/ Other | Total Rep   | Mod/ Lib Rep | Con Rep   |
| Unweighted Base                          | 1,114       | 466       | 295       | 168          | 95         | 356         | 116          | 238       |
|  | %           | %         | %         | %            | %          | %           | %            | %         |
| <b>Very/Extremely/Moderately harmful</b> | <b>42</b>   | <b>50</b> | <b>49</b> | <b>50</b>    | <b>22</b>  | <b>39</b>   | <b>43</b>    | <b>36</b> |
| Extremely harmful                        | 10          | 11        | 10        | 11           | 7          | 8           | 8            | 6         |
| Very harmful                             | 12          | 15        | 14        | 18           | 4          | 10          | 11           | 9         |
| Moderately harmful                       | 19          | 23        | 25        | 21           | 11         | 22          | 24           | 21        |
| A little harmful                         | 17          | 18        | 17        | 19           | 22         | 20          | 15           | 23        |
| Not at all harmful                       | 7           | 6         | 7         | 3            | 6          | 9           | 5            | 11        |
| Don't know                               | 33          | 25        | 25        | 25           | 46         | 32          | 36           | 30        |

**Trash-to-energy plants**

|  |             | Democrats |           |              |            | Republicans |              |           |
|--|-------------|-----------|-----------|--------------|------------|-------------|--------------|-----------|
|  | Full Sample | Total Dem | Lib Dem   | Mod/ Con Dem | Ind/ Other | Total Rep   | Mod/ Lib Rep | Con Rep   |
| Unweighted Base                          | 1,114       | 466       | 295       | 168          | 95         | 356         | 116          | 238       |
|  | %           | %         | %         | %            | %          | %           | %            | %         |
| <b>Very/Extremely/Moderately harmful</b> | <b>22</b>   | <b>23</b> | <b>20</b> | <b>27</b>    | <b>15</b>  | <b>21</b>   | <b>15</b>    | <b>23</b> |
| Extremely harmful                        | 3           | 2         | 2         | 3            | 3          | 2           | --           | 2         |
| Very harmful                             | 5           | 6         | 3         | 9            | 4          | 4           | 5            | 3         |
| Moderately harmful                       | 14          | 15        | 15        | 14           | 8          | 15          | 9            | 18        |
| A little harmful                         | 21          | 24        | 24        | 25           | 21         | 25          | 25           | 25        |
| Not at all harmful                       | 15          | 16        | 21        | 8            | 15         | 13          | 10           | 15        |
| Don't know                               | 40          | 36        | 34        | 38           | 45         | 41          | 49           | 37        |

**To the best of your knowledge, how harmful are each of the following energy sources to people's health?  
(Cont'd.)**

### Wood-fueled power plants

|  |             | Democrats |           |              |            | Republicans |              |           |
|--|-------------|-----------|-----------|--------------|------------|-------------|--------------|-----------|
|  | Full Sample | Total Dem | Lib Dem   | Mod/ Con Dem | Ind/ Other | Total Rep   | Mod/ Lib Rep | Con Rep   |
| Unweighted Base                          | 1,114       | 466       | 295       | 168          | 95         | 356         | 116          | 238       |
|  | %           | %         | %         | %            | %          | %           | %            | %         |
| <b>Very/Extremely/Moderately harmful</b> | <b>38</b>   | <b>43</b> | <b>43</b> | <b>44</b>    | <b>26</b>  | <b>39</b>   | <b>36</b>    | <b>41</b> |
| Extremely harmful                        | 5           | 6         | 4         | 9            | 4          | 3           | 2            | 4         |
| Very harmful                             | 10          | 12        | 13        | 10           | 8          | 5           | 5            | 6         |
| Moderately harmful                       | 23          | 26        | 26        | 26           | 13         | 30          | 28           | 32        |
| A little harmful                         | 22          | 22        | 25        | 18           | 25         | 25          | 21           | 26        |
| Not at all harmful                       | 7           | 6         | 6         | 7            | 3          | 8           | 10           | 7         |
| Don't know                               | 32          | 27        | 26        | 29           | 43         | 28          | 33           | 26        |

### Coal

|  |             | Democrats |           |              |            | Republicans |              |           |
|--|-------------|-----------|-----------|--------------|------------|-------------|--------------|-----------|
|  | Full Sample | Total Dem | Lib Dem   | Mod/ Con Dem | Ind/ Other | Total Rep   | Mod/ Lib Rep | Con Rep   |
| Unweighted Base                          | 1,114       | 466       | 295       | 168          | 95         | 356         | 116          | 238       |
|  | %           | %         | %         | %            | %          | %           | %            | %         |
| <b>Very/Extremely/Moderately harmful</b> | <b>62</b>   | <b>76</b> | <b>81</b> | <b>71</b>    | <b>60</b>  | <b>57</b>   | <b>56</b>    | <b>57</b> |
| Extremely harmful                        | 20          | 32        | 38        | 24           | 19         | 10          | 10           | 9         |
| Very harmful                             | 21          | 23        | 26        | 20           | 21         | 18          | 21           | 17        |
| Moderately harmful                       | 22          | 21        | 17        | 27           | 19         | 29          | 25           | 31        |
| A little harmful                         | 13          | 6         | 5         | 8            | 11         | 20          | 13           | 24        |
| Not at all harmful                       | 5           | 3         | 4         | 3            | 0          | 8           | 5            | 8         |
| Don't know                               | 19          | 13        | 11        | 16           | 27         | 15          | 25           | 10        |



Please indicate which one of these statements comes closest to your own views – even if it is not exactly right:

Overall, government policies intended to transition away from fossil fuels (coal, oil, natural gas) and toward clean energy (solar, wind) will...

|  |             | Democrats |         |             |           | Republicans |             |         |
|--|-------------|-----------|---------|-------------|-----------|-------------|-------------|---------|
|  | Full Sample | Total Dem | Lib Dem | Mod/Con Dem | Ind/Other | Total Rep   | Mod/Lib Rep | Con Rep |
| Unweighted Base                              | 1,114       | 466       | 295     | 168         | 95        | 356         | 116         | 238     |
|  | %           | %         | %       | %           | %         | %           | %           | %       |
| Improve economic growth and provide new jobs | 58          | 75        | 82      | 65          | 59        | 39          | 48          | 34      |
| Have no impact on economic growth or jobs    | 23          | 16        | 12      | 21          | 18        | 29          | 37          | 25      |
| Reduce economic growth and cost jobs         | 18          | 7         | 5       | 11          | 22        | 31          | 14          | 40      |

**How important to you personally, if at all, are each of following reasons to transition to 100% clean, renewable energy?**

**Reduce global warming**

|   |             | Democrats |           |             |           | Republicans |             |           |
|---|-------------|-----------|-----------|-------------|-----------|-------------|-------------|-----------|
|   | Full Sample | Total Dem | Lib Dem   | Mod/Con Dem | Ind/Other | Total Rep   | Mod/Lib Rep | Con Rep   |
| Unweighted Base   | 1,114       | 466       | 295       | 168         | 95        | 356         | 116         | 238       |
|   | %           | %         | %         | %           | %         | %           | %           | %         |
| <b>Extremely/Very important</b>   | <b>66</b>   | <b>86</b> | <b>92</b> | <b>78</b>   | <b>57</b> | <b>40</b>   | <b>55</b>   | <b>32</b> |
| Extremely important   | 44          | 67        | 75        | 53          | 31        | 20          | 32          | 13        |
| Very important  | 21          | 20        | 17        | 25          | 26        | 20          | 23          | 19        |
| Moderately important  | 14          | 9         | 5         | 14          | 15        | 18          | 23          | 16        |
| Only a little important   | 5           | 1         | 1         | 1           | 8         | 8           | 5           | 9         |
| Not at all important  | 6           | 1         | 1         | 1           | 8         | 15          | 9           | 18        |
| N/A because I do not support a transition to 100% clean, renewable energy | 9           | 3         | 1         | 5           | 10        | 17          | 8           | 23        |

**Reduce air pollution**

|   |             | Democrats |           |             |           | Republicans |             |           |
|---|-------------|-----------|-----------|-------------|-----------|-------------|-------------|-----------|
|   | Full Sample | Total Dem | Lib Dem   | Mod/Con Dem | Ind/Other | Total Rep   | Mod/Lib Rep | Con Rep   |
| Unweighted Base   | 1,114       | 466       | 295       | 168         | 95        | 356         | 116         | 238       |
|   | %           | %         | %         | %           | %         | %           | %           | %         |
| <b>Extremely/Very important</b>   | <b>74</b>   | <b>88</b> | <b>93</b> | <b>81</b>   | <b>76</b> | <b>56</b>   | <b>62</b>   | <b>52</b> |
| Extremely important   | 47          | 62        | 68        | 53          | 40        | 27          | 32          | 23        |
| Very important  | 27          | 26        | 25        | 27          | 36        | 29          | 30          | 29        |
| Moderately important  | 11          | 6         | 3         | 10          | 9         | 18          | 26          | 13        |
| Only a little important   | 4           | 3         | 2         | 4           | 1         | 7           | 3           | 10        |
| Not at all important  | 1           | 0         | 0         | 0           | 1         | 1           | 0           | 1         |
| N/A because I do not support a transition to 100% clean, renewable energy | 9           | 3         | 1         | 5           | 10        | 17          | 8           | 23        |

**How important to you personally, if at all, are each of following reasons to transition to 100% clean, renewable energy? (Cont'd.)**

**Reduce water pollution**

|   |                    | Democrats        |                |                    |                  | Republicans      |                    |                |
|---|--------------------|------------------|----------------|--------------------|------------------|------------------|--------------------|----------------|
|   | <b>Full Sample</b> | <b>Total Dem</b> | <b>Lib Dem</b> | <b>Mod/Con Dem</b> | <b>Ind/Other</b> | <b>Total Rep</b> | <b>Mod/Lib Rep</b> | <b>Con Rep</b> |
| Unweighted Base   | 1,114              | 466              | 295            | 168                | 95               | 356              | 116                | 238            |
|   | %                  | %                | %              | %                  | %                | %                | %                  | %              |
| <b>Extremely/Very important</b>   | <b>75</b>          | <b>87</b>        | <b>89</b>      | <b>83</b>          | <b>79</b>        | <b>58</b>        | <b>65</b>          | <b>54</b>      |
| Extremely important   | 46                 | 59               | 65             | 49                 | 41               | 28               | 33                 | 25             |
| Very important  | 29                 | 28               | 24             | 35                 | 38               | 30               | 32                 | 30             |
| Moderately important  | 12                 | 8                | 7              | 10                 | 7                | 17               | 22                 | 15             |
| Only a little important   | 3                  | 1                | 2              | 1                  | 1                | 5                | 4                  | 6              |
| Not at all important  | 1                  | 1                | 0              | 1                  | 1                | 0                | -                  | 1              |
| N/A because I do not support a transition to 100% clean, renewable energy | 9                  | 3                | 1              | 5                  | 10               | 17               | 8                  | 23             |

**Increase America's energy independence**

|   |                    | Democrats        |                |                    |                  | Republicans      |                    |                |
|---|--------------------|------------------|----------------|--------------------|------------------|------------------|--------------------|----------------|
|   | <b>Full Sample</b> | <b>Total Dem</b> | <b>Lib Dem</b> | <b>Mod/Con Dem</b> | <b>Ind/Other</b> | <b>Total Rep</b> | <b>Mod/Lib Rep</b> | <b>Con Rep</b> |
| Unweighted Base   | 1,114              | 466              | 295            | 168                | 95               | 356              | 116                | 238            |
|   | %                  | %                | %              | %                  | %                | %                | %                  | %              |
| <b>Extremely/Very important</b>   | <b>64</b>          | <b>73</b>        | <b>75</b>      | <b>70</b>          | <b>71</b>        | <b>56</b>        | <b>61</b>          | <b>53</b>      |
| Extremely important   | 36                 | 46               | 48             | 41                 | 38               | 29               | 29                 | 28             |
| Very important  | 28                 | 28               | 27             | 29                 | 33               | 27               | 33                 | 25             |
| Moderately important  | 19                 | 17               | 17             | 19                 | 10               | 18               | 23                 | 16             |
| Only a little important   | 5                  | 4                | 6              | 2                  | 2                | 5                | 5                  | 5              |
| Not at all important  | 2                  | 2                | 1              | 4                  | 4                | 2                | 1                  | 2              |
| N/A because I do not support a transition to 100% clean, renewable energy | 9                  | 3                | 1              | 5                  | 10               | 17               | 8                  | 23             |

**How important to you personally, if at all, are each of following reasons to transition to 100% clean, renewable energy? (Cont'd.)**

**To get energy from sources that will never run out**

|   |                    | Democrats        |                |                    |                  | Republicans      |                     |                |
|---|--------------------|------------------|----------------|--------------------|------------------|------------------|---------------------|----------------|
|   | <u>Full Sample</u> | <u>Total Dem</u> | <u>Lib Dem</u> | <u>Mod/Con Dem</u> | <u>Ind/Other</u> | <u>Total Rep</u> | <u>Mod/ Lib Rep</u> | <u>Con Rep</u> |
| Unweighted Base   | 1,114              | 466              | 295            | 168                | 95               | 356              | 116                 | 238            |
|   | %                  | %                | %              | %                  | %                | %                | %                   | %              |
| <b>Extremely/Very important</b>   | <b>71</b>          | <b>80</b>        | <b>83</b>      | <b>76</b>          | <b>73</b>        | <b>58</b>        | <b>63</b>           | <b>55</b>      |
| Extremely important   | 43                 | 58               | 62             | 51                 | 39               | 28               | 32                  | 25             |
| Very important  | 28                 | 23               | 21             | 26                 | 34               | 30               | 31                  | 30             |
| Moderately important  | 15                 | 13               | 11             | 16                 | 11               | 19               | 24                  | 16             |
| Only a little important   | 3                  | 2                | 3              | 1                  | 3                | 3                | 3                   | 3              |
| Not at all important  | 2                  | 1                | 1              | 1                  | 1                | 1                | 1                   | 1              |
| N/A because I do not support a transition to 100% clean, renewable energy | 9                  | 3                | 1              | 5                  | 10               | 17               | 8                   | 23             |

**Reduce energy costs**

|   |                    | Democrats        |                |                    |                  | Republicans      |                     |                |
|---|--------------------|------------------|----------------|--------------------|------------------|------------------|---------------------|----------------|
|   | <u>Full Sample</u> | <u>Total Dem</u> | <u>Lib Dem</u> | <u>Mod/Con Dem</u> | <u>Ind/Other</u> | <u>Total Rep</u> | <u>Mod/ Lib Rep</u> | <u>Con Rep</u> |
| Unweighted Base   | 1,114              | 466              | 295            | 168                | 95               | 356              | 116                 | 238            |
|   | %                  | %                | %              | %                  | %                | %                | %                   | %              |
| <b>Extremely/Very important</b>   | <b>71</b>          | <b>77</b>        | <b>77</b>      | <b>76</b>          | <b>69</b>        | <b>58</b>        | <b>62</b>           | <b>54</b>      |
| Extremely important   | 43                 | 47               | 49             | 44                 | 36               | 29               | 35                  | 25             |
| Very important  | 28                 | 30               | 28             | 33                 | 33               | 29               | 28                  | 30             |
| Moderately important  | 15                 | 15               | 16             | 14                 | 12               | 20               | 25                  | 18             |
| Only a little important   | 3                  | 4                | 5              | 3                  | 6                | 3                | 3                   | 2              |
| Not at all important  | 2                  | 1                | 1              | 1                  | 1                | 1                | 0                   | 1              |
| N/A because I do not support a transition to 100% clean, renewable energy | 9                  | 3                | 1              | 5                  | 10               | 17               | 8                   | 23             |

**How important to you personally, if at all, are each of following reasons to transition to 100% clean, renewable energy? (Cont'd.)**

**Make energy costs more stable**

|   |                    | Democrats        |                |                     |                   | Republicans      |                     |                |
|---|--------------------|------------------|----------------|---------------------|-------------------|------------------|---------------------|----------------|
|   | <u>Full Sample</u> | <u>Total Dem</u> | <u>Lib Dem</u> | <u>Mod/ Con Dem</u> | <u>Ind/ Other</u> | <u>Total Rep</u> | <u>Mod/ Lib Rep</u> | <u>Con Rep</u> |
| Unweighted Base   | 1,114              | 466              | 295            | 168                 | 95                | 356              | 116                 | 238            |
|   | %                  | %                | %              | %                   | %                 | %                | %                   | %              |
| <b>Extremely/Very important</b>   | <b>65</b>          | <b>73</b>        | <b>75</b>      | <b>70</b>           | <b>63</b>         | <b>52</b>        | <b>56</b>           | <b>50</b>      |
| Extremely important   | 31                 | 39               | 42             | 35                  | 26                | 21               | 25                  | 20             |
| Very important  | 33                 | 34               | 33             | 35                  | 37                | 31               | 31                  | 30             |
| Moderately important  | 20                 | 20               | 19             | 20                  | 23                | 23               | 31                  | 19             |
| Only a little important   | 4                  | 4                | 4              | 4                   | 1                 | 5                | 4                   | 5              |
| Not at all important  | 2                  | 1                | 1              | 0                   | 1                 | 1                | 0                   | 2              |
| N/A because I do not support a transition to 100% clean, renewable energy | 9                  | 3                | 1              | 5                   | 10                | 17               | 8                   | 23             |

**Reduce the military costs of protecting our access to foreign sources of energy**

|   |                    | Democrats        |                |                     |                   | Republicans      |                     |                |
|---|--------------------|------------------|----------------|---------------------|-------------------|------------------|---------------------|----------------|
|   | <u>Full Sample</u> | <u>Total Dem</u> | <u>Lib Dem</u> | <u>Mod/ Con Dem</u> | <u>Ind/ Other</u> | <u>Total Rep</u> | <u>Mod/ Lib Rep</u> | <u>Con Rep</u> |
| Unweighted Base   | 1,114              | 466              | 295            | 168                 | 95                | 356              | 116                 | 238            |
|   | %                  | %                | %              | %                   | %                 | %                | %                   | %              |
| <b>Extremely/Very important</b>   | <b>53</b>          | <b>64</b>        | <b>67</b>      | <b>58</b>           | <b>58</b>         | <b>41</b>        | <b>46</b>           | <b>38</b>      |
| Extremely important   | 26                 | 36               | 40             | 30                  | 30                | 18               | 22                  | 16             |
| Very important  | 28                 | 28               | 28             | 28                  | 29                | 22               | 24                  | 22             |
| Moderately important  | 24                 | 22               | 20             | 25                  | 20                | 24               | 32                  | 19             |
| Only a little important   | 9                  | 9                | 9              | 9                   | 6                 | 9                | 10                  | 9              |
| Not at all important  | 5                  | 2                | 2              | 2                   | 4                 | 7                | 3                   | 9              |
| N/A because I do not support a transition to 100% clean, renewable energy | 9                  | 3                | 1              | 5                   | 10                | 17               | 8                   | 23             |



**How important to you personally, if at all, are each of following reasons to transition to 100% clean, renewable energy? (Cont'd.)**

**Make the U.S. a global leader in the clean, renewable energy industry**

|   |                    | Democrats        |                |                    |                  | Republicans      |                     |                |
|---|--------------------|------------------|----------------|--------------------|------------------|------------------|---------------------|----------------|
|   | <u>Full Sample</u> | <u>Total Dem</u> | <u>Lib Dem</u> | <u>Mod/Con Dem</u> | <u>Ind/Other</u> | <u>Total Rep</u> | <u>Mod/ Lib Rep</u> | <u>Con Rep</u> |
| Unweighted Base   | 1,114              | 466              | 295            | 168                | 95               | 356              | 116                 | 238            |
|   | %                  | %                | %              | %                  | %                | %                | %                   | %              |
| <b>Extremely/Very important</b>   | <b>53</b>          | <b>68</b>        | <b>71</b>      | <b>63</b>          | <b>46</b>        | <b>40</b>        | <b>44</b>           | <b>37</b>      |
| Extremely important   | 27                 | 40               | 44             | 32                 | 22               | 13               | 16                  | 12             |
| Very important  | 27                 | 29               | 27             | 31                 | 25               | 26               | 28                  | 26             |
| Moderately important  | 24                 | 19               | 16             | 23                 | 27               | 25               | 35                  | 20             |
| Only a little important   | 8                  | 6                | 6              | 6                  | 11               | 9                | 9                   | 9              |
| Not at all important  | 6                  | 4                | 5              | 3                  | 4                | 7                | 3                   | 10             |
| N/A because I do not support a transition to 100% clean, renewable energy | 9                  | 3                | 1              | 5                  | 10               | 17               | 8                   | 23             |

**Improve people's health**

|   |                    | Democrats        |                |                    |                  | Republicans      |                     |                |
|---|--------------------|------------------|----------------|--------------------|------------------|------------------|---------------------|----------------|
|   | <u>Full Sample</u> | <u>Total Dem</u> | <u>Lib Dem</u> | <u>Mod/Con Dem</u> | <u>Ind/Other</u> | <u>Total Rep</u> | <u>Mod/ Lib Rep</u> | <u>Con Rep</u> |
| Unweighted Base   | 1,114              | 466              | 295            | 168                | 95               | 356              | 116                 | 238            |
|   | %                  | %                | %              | %                  | %                | %                | %                   | %              |
| <b>Extremely/Very important</b>   | <b>71</b>          | <b>83</b>        | <b>86</b>      | <b>77</b>          | <b>73</b>        | <b>53</b>        | <b>59</b>           | <b>49</b>      |
| Extremely important   | 43                 | 58               | 66             | 47                 | 32               | 26               | 28                  | 25             |
| Very important  | 28                 | 24               | 21             | 30                 | 41               | 27               | 31                  | 25             |
| Moderately important  | 14                 | 11               | 8              | 14                 | 11               | 21               | 30                  | 16             |
| Only a little important   | 4                  | 2                | 3              | 1                  | 2                | 6                | 2                   | 8              |
| Not at all important  | 2                  | 1                | --             | 3                  | 2                | 1                | --                  | 2              |
| N/A because I do not support a transition to 100% clean, renewable energy | 9                  | 3                | 1              | 5                  | 10               | 17               | 8                   | 23             |

**How important to you personally, if at all, are each of following reasons to transition to 100% clean, renewable energy? (Cont'd.)**

**Create jobs and a stronger economy**

|   |                    | Democrats        |                |                    |                  | Republicans      |                     |                |
|---|--------------------|------------------|----------------|--------------------|------------------|------------------|---------------------|----------------|
|   | <u>Full Sample</u> | <u>Total Dem</u> | <u>Lib Dem</u> | <u>Mod/Con Dem</u> | <u>Ind/Other</u> | <u>Total Rep</u> | <u>Mod/ Lib Rep</u> | <u>Con Rep</u> |
| Unweighted Base   | 1,114              | 466              | 295            | 168                | 95               | 356              | 116                 | 238            |
|   | %                  | %                | %              | %                  | %                | %                | %                   | %              |
| <b>Extremely/Very important</b>   | <b>66</b>          | <b>75</b>        | <b>77</b>      | <b>72</b>          | <b>65</b>        | <b>54</b>        | <b>61</b>           | <b>49</b>      |
| Extremely important   | 34                 | 43               | 47             | 37                 | 33               | 22               | 26                  | 19             |
| Very important  | 32                 | 31               | 30             | 34                 | 32               | 32               | 36                  | 30             |
| Moderately important  | 19                 | 18               | 17             | 20                 | 18               | 20               | 24                  | 18             |
| Only a little important   | 4                  | 4                | 4              | 3                  | 2                | 5                | 5                   | 6              |
| Not at all important  | 2                  | 1                | 1              | 0                  | 2                | 2                | 0                   | 3              |
| N/A because I do not support a transition to 100% clean, renewable energy | 9                  | 3                | 1              | 5                  | 10               | 17               | 8                   | 23             |

**Save many plant and animal species from extinction**

|   |                    | Democrats        |                |                    |                  | Republicans      |                     |                |
|---|--------------------|------------------|----------------|--------------------|------------------|------------------|---------------------|----------------|
|   | <u>Full Sample</u> | <u>Total Dem</u> | <u>Lib Dem</u> | <u>Mod/Con Dem</u> | <u>Ind/Other</u> | <u>Total Rep</u> | <u>Mod/ Lib Rep</u> | <u>Con Rep</u> |
| Unweighted Base   | 1,114              | 466              | 295            | 168                | 95               | 356              | 116                 | 238            |
|   | %                  | %                | %              | %                  | %                | %                | %                   | %              |
| <b>Extremely/Very important</b>   | <b>67</b>          | <b>80</b>        | <b>85</b>      | <b>73</b>          | <b>66</b>        | <b>49</b>        | <b>62</b>           | <b>41</b>      |
| Extremely important   | 40                 | 54               | 62             | 42                 | 27               | 25               | 32                  | 21             |
| Very important  | 27                 | 26               | 23             | 30                 | 39               | 24               | 30                  | 20             |
| Moderately important  | 15                 | 12               | 9              | 18                 | 16               | 20               | 19                  | 20             |
| Only a little important   | 5                  | 3                | 3              | 2                  | 4                | 9                | 8                   | 10             |
| Not at all important  | 3                  | 1                | 1              | 1                  | 2                | 4                | 2                   | 5              |
| N/A because I do not support a transition to 100% clean, renewable energy | 9                  | 3                | 1              | 5                  | 10               | 17               | 8                   | 23             |

**How important to you personally, if at all, are each of following reasons to transition to 100% clean, renewable energy? (Cont'd.)**

**Protect God's creation**

|   |             | Democrats |           |             |           | Republicans |             |           |
|---|-------------|-----------|-----------|-------------|-----------|-------------|-------------|-----------|
|   | Full Sample | Total Dem | Lib Dem   | Mod/Con Dem | Ind/Other | Total Rep   | Mod/Lib Rep | Con Rep   |
| Unweighted Base   | 1,114       | 466       | 295       | 168         | 95        | 356         | 116         | 238       |
|   | %           | %         | %         | %           | %         | %           | %           | %         |
| <b>Extremely/Very important</b>   | <b>51</b>   | <b>51</b> | <b>47</b> | <b>58</b>   | <b>40</b> | <b>48</b>   | <b>50</b>   | <b>45</b> |
| Extremely important   | 33          | 34        | 33        | 36          | 27        | 27          | 28          | 27        |
| Very important  | 18          | 17        | 14        | 22          | 14        | 20          | 23          | 19        |
| Moderately important  | 17          | 16        | 12        | 22          | 21        | 19          | 25          | 16        |
| Only a little important   | 7           | 8         | 10        | 5           | 4         | 7           | 6           | 8         |
| Not at all important  | 15          | 22        | 30        | 9           | 20        | 8           | 11          | 7         |
| N/A because I do not support a transition to 100% clean, renewable energy | 9           | 3         | 1         | 5           | 10        | 17          | 8           | 23        |

**Provide a better life for our children and grandchildren**

|   |             | Democrats |           |             |           | Republicans |             |           |
|---|-------------|-----------|-----------|-------------|-----------|-------------|-------------|-----------|
|   | Full Sample | Total Dem | Lib Dem   | Mod/Con Dem | Ind/Other | Total Rep   | Mod/Lib Rep | Con Rep   |
| Unweighted Base   | 1,114       | 466       | 295       | 168         | 95        | 356         | 116         | 238       |
|   | %           | %         | %         | %           | %         | %           | %           | %         |
| <b>Extremely/Very important</b>   | <b>72</b>   | <b>84</b> | <b>89</b> | <b>78</b>   | <b>67</b> | <b>55</b>   | <b>63</b>   | <b>51</b> |
| Extremely important   | 47          | 61        | 68        | 51          | 42        | 29          | 31          | 28        |
| Very important  | 24          | 24        | 21        | 27          | 25        | 26          | 32          | 22        |
| Moderately important  | 14          | 9         | 8         | 12          | 13        | 19          | 26          | 16        |
| Only a little important   | 4           | 1         | 0         | 3           | 5         | 5           | 3           | 7         |
| Not at all important  | 2           | 2         | 2         | 2           | 2         | 2           | --          | 3         |
| N/A because I do not support a transition to 100% clean, renewable energy | 9           | 3         | 1         | 5           | 10        | 17          | 8           | 23        |

**How important to you personally, if at all, are each of following reasons to transition to 100% clean, renewable energy? (Cont'd.)**

**Reduce the influence of the fossil fuel industry on our government**

|   |             | Democrats |           |             |           | Republicans |             |           |
|---|-------------|-----------|-----------|-------------|-----------|-------------|-------------|-----------|
|   | Full Sample | Total Dem | Lib Dem   | Mod/Con Dem | Ind/Other | Total Rep   | Mod/Lib Rep | Con Rep   |
| Unweighted Base   | 1,114       | 466       | 295       | 168         | 95        | 356         | 116         | 238       |
|   | %           | %         | %         | %           | %         | %           | %           | %         |
| <b>Extremely/Very important</b>   | <b>59</b>   | <b>76</b> | <b>80</b> | <b>69</b>   | <b>57</b> | <b>39</b>   | <b>46</b>   | <b>35</b> |
| Extremely important   | 32          | 48        | 53        | 39          | 32        | 15          | 21          | 11        |
| Very important  | 26          | 28        | 27        | 30          | 25        | 24          | 25          | 24        |
| Moderately important  | 22          | 16        | 14        | 19          | 20        | 24          | 34          | 20        |
| Only a little important   | 6           | 4         | 3         | 6           | 4         | 11          | 9           | 12        |
| Not at all important  | 4           | 1         | 1         | 1           | 7         | 6           | 3           | 8         |
| N/A because I do not support a transition to 100% clean, renewable energy | 9           | 3         | 1         | 5           | 10        | 17          | 8           | 23        |

**Protect the communities most harmed by the use of fossil fuels**

|   |             | Democrats |           |             |           | Republicans |             |           |
|---|-------------|-----------|-----------|-------------|-----------|-------------|-------------|-----------|
|   | Full Sample | Total Dem | Lib Dem   | Mod/Con Dem | Ind/Other | Total Rep   | Mod/Lib Rep | Con Rep   |
| Unweighted Base   | 1,114       | 466       | 295       | 168         | 95        | 356         | 116         | 238       |
|   | %           | %         | %         | %           | %         | %           | %           | %         |
| <b>Extremely/Very important</b>   | <b>60</b>   | <b>78</b> | <b>83</b> | <b>70</b>   | <b>58</b> | <b>37</b>   | <b>40</b>   | <b>34</b> |
| Extremely important   | 32          | 44        | 50        | 33          | 29        | 17          | 25          | 12        |
| Very important  | 28          | 35        | 33        | 37          | 29        | 20          | 15          | 22        |
| Moderately important  | 23          | 14        | 12        | 18          | 22        | 33          | 42          | 28        |
| Only a little important   | 5           | 3         | 2         | 4           | 4         | 9           | 8           | 10        |
| Not at all important  | 3           | 2         | 1         | 4           | 4         | 2           | 1           | 4         |
| N/A because I do not support a transition to 100% clean, renewable energy | 9           | 3         | 1         | 5           | 10        | 17          | 8           | 23        |

**Do you think the following should be a low, medium, high, or very high priority for the president and Congress?**

**Developing sources of clean energy**

|                         |             | Democrats |           |              |            | Republicans |              |           |
|-------------------------|-------------|-----------|-----------|--------------|------------|-------------|--------------|-----------|
|                         | Full Sample | Total Dem | Lib Dem   | Mod/ Con Dem | Ind/ Other | Total Rep   | Mod/ Lib Rep | Con Rep   |
| Unweighted Base         | 1,114       | 466       | 295       | 168          | 95         | 356         | 116          | 238       |
|                         | %           | %         | %         | %            | %          | %           | %            | %         |
| <b>Very High / High</b> | <b>71</b>   | <b>87</b> | <b>93</b> | <b>77</b>    | <b>76</b>  | <b>51</b>   | <b>62</b>    | <b>45</b> |
| Very high               | 40          | 59        | 69        | 45           | 30         | 20          | 33           | 13        |
| High                    | 32          | 27        | 24        | 32           | 47         | 31          | 30           | 32        |
| Medium                  | 21          | 10        | 4         | 18           | 16         | 37          | 29           | 41        |
| Low                     | 7           | 3         | 2         | 5            | 8          | 11          | 7            | 13        |

**If all nations of the world switched to 100% clean, renewable energy by 2050, how effective would that be at limiting global warming?**

|                                  |             | Democrats |           |              |            | Republicans |              |           |
|----------------------------------|-------------|-----------|-----------|--------------|------------|-------------|--------------|-----------|
|                                  | Full Sample | Total Dem | Lib Dem   | Mod/ Con Dem | Ind/ Other | Total Rep   | Mod/ Lib Rep | Con Rep   |
| Unweighted Base                  | 1,114       | 466       | 295       | 168          | 95         | 356         | 116          | 238       |
|                                  | %           | %         | %         | %            | %          | %           | %            | %         |
| <b>Very/Moderately effective</b> | <b>61</b>   | <b>79</b> | <b>86</b> | <b>67</b>    | <b>57</b>  | <b>41</b>   | <b>51</b>    | <b>36</b> |
| Very effective                   | 31          | 45        | 50        | 36           | 17         | 15          | 23           | 11        |
| Moderately effective             | 30          | 34        | 36        | 31           | 40         | 26          | 28           | 25        |
| Only a little effective          | 14          | 8         | 6         | 12           | 15         | 24          | 25           | 23        |
| Not at all effective             | 6           | 1         | 1         | 1            | 8          | 16          | 4            | 22        |
| Don't know                       | 18          | 12        | 7         | 20           | 17         | 18          | 19           | 18        |



**How much do you support or oppose requiring electric utilities in your state to produce 100% of their electricity from clean, renewable energy sources (such as wind and solar) by 2050?**

|                                  |                       | Democrats |           |              |            | Republicans |              |           |
|----------------------------------|-----------------------|-----------|-----------|--------------|------------|-------------|--------------|-----------|
|                                  | All Registered Voters | Total Dem | Lib Dem   | Mod/ Con Dem | Ind/ Other | Total Rep   | Mod/ Lib Rep | Con Rep   |
| Unweighted Base                  | 966                   | 466       | 295       | 168          | 95         | 356         | 116          | 238       |
|                                  | %                     | %         | %         | %            | %          | %           | %            | %         |
| <b>Strongly/Somewhat Support</b> | <b>85</b>             | <b>95</b> | <b>97</b> | <b>92</b>    | <b>88</b>  | <b>71</b>   | <b>83</b>    | <b>64</b> |
| Strongly support                 | 38                    | 52        | 64        | 34           | 30         | 20          | 29           | 14        |
| Somewhat support                 | 47                    | 43        | 33        | 58           | 58         | 51          | 54           | 49        |
| <b>Strongly/Somewhat Oppose</b>  | <b>14</b>             | <b>4</b>  | <b>3</b>  | <b>5</b>     | <b>12</b>  | <b>29</b>   | <b>17</b>    | <b>36</b> |
| Somewhat oppose                  | 7                     | 3         | 1         | 5            | 6          | 13          | 11           | 14        |
| Strongly oppose                  | 7                     | 1         | 2         | --           | 7          | 16          | 6            | 22        |

**How confident are you that electric utilities in your state could meet the goal of producing 100% of their electricity from clean, renewable energy sources (such as wind and solar) by 2050, if they were required to by your state government?**

|                                      |             | Democrats |           |              |            | Republicans |              |           |
|--------------------------------------|-------------|-----------|-----------|--------------|------------|-------------|--------------|-----------|
|                                      | Full Sample | Total Dem | Lib Dem   | Mod/ Con Dem | Ind/ Other | Total Rep   | Mod/ Lib Rep | Con Rep   |
| Unweighted Base                      | 1,114       | 466       | 295       | 168          | 95         | 356         | 116          | 238       |
|                                      | %           | %         | %         | %            | %          | %           | %            | %         |
| <b>Extremely/Very/Mod. confident</b> | <b>56</b>   | <b>68</b> | <b>72</b> | <b>61</b>    | <b>51</b>  | <b>47</b>   | <b>55</b>    | <b>42</b> |
| Extremely confident                  | 12          | 19        | 23        | 14           | 8          | 8           | 8            | 7         |
| Very confident                       | 16          | 18        | 19        | 16           | 12         | 14          | 16           | 12        |
| Moderately confident                 | 28          | 31        | 31        | 31           | 30         | 25          | 30           | 22        |
| Only a little confident              | 19          | 17        | 17        | 17           | 20         | 25          | 19           | 23        |
| Not at all confident                 | 13          | 7         | 8         | 6            | 15         | 21          | 14           | 26        |
| Don't know                           | 12          | 7         | 2         | 15           | 15         | 21          | 12           | 10        |

**Would you be more or less likely to vote for a candidate for political office who supports requiring electric utilities in your state to produce 100% of their electricity from clean, renewable energy sources (such as wind and solar) by 2050?**

|  |                       | Democrats |           |              |            | Republicans |              |           |
|--|-----------------------|-----------|-----------|--------------|------------|-------------|--------------|-----------|
|  | All Registered Voters | Total Dem | Lib Dem   | Mod/ Con Dem | Ind/ Other | Total Rep   | Mod/ Lib Rep | Con Rep   |
| Unweighted Base  | 966                   | 466       | 295       | 168          | 95         | 356         | 116          | 238       |
|  | %                     | %         | %         | %            | %          | %           | %            | %         |
| <b>Much/Somewhat more likely to vote for the candidate</b> | <b>54</b>             | <b>72</b> | <b>82</b> | <b>57</b>    | <b>43</b>  | <b>33</b>   | <b>45</b>    | <b>27</b> |
| Much more likely to vote for the candidate                 | 22                    | 36        | 44        | 23           | 13         | 7           | 9            | 6         |
| Somewhat more likely to vote for the candidate             | 31                    | 36        | 37        | 33           | 30         | 26          | 36           | 21        |
| Makes no difference either way                             | 32                    | 24        | 14        | 39           | 4          | 38          | 42           | 36        |
| Somewhat less likely to vote for the candidate             | 4                     | 1         | 0         | 1            | 1          | 10          | 6            | 12        |
| Much less likely to vote for the candidate                 | 9                     | 3         | 3         | 4            | 3          | 18          | 6            | 25        |

**How much do you support or oppose the following policies?**  
**Fund more research into renewable energy sources, such as solar and wind power.**

**(Base: Registered American Voters 18+)**

| <i>Unweighted bases</i>                | Dec 2018 | March 2018 | Oct 2017 | May 2017 | Nov 2016 | March 2016 | Oct 2015 | March 2015 | Oct 2014 | April 2014 | Nov 2013 | April 2013 | Sept 2012 | March 2012 | Nov 2011 | May 2011 | June 2010 | Jan 2010 | Nov 2008 |
|--|----------|------------|----------|----------|----------|------------|----------|------------|----------|------------|----------|------------|-----------|------------|----------|----------|-----------|----------|----------|
| <b>All Registered Voters</b>           | 966      | 1,067      | 1,109    | 1,070    | 1,061    | 1,004      | 1,070    | 1,025      | 1,045    | 860        | 669      | 889        | 885       | 849        | 813      | 827      | 857       | 856      | 2,203    |
|  | %        | %          | %        | %        | %        | %          | %        | %          | %        | %          | %        | %          | %         | %          | %        | %        | %         | %        | %        |
| Strongly support                       | 48       | 47         | 47       | 46       | 39       | 43         | 42       | 39         | 37       | 32         | 33       | 28         | 31        | 36         | 36       | 49       | 44        | 42       | 51       |
| Somewhat support                       | 40       | 40         | 40       | 40       | 43       | 41         | 42       | 42         | 42       | 44         | 40       | 45         | 43        | 43         | 40       | 35       | 43        | 43       | 37       |
| Somewhat oppose                        | 6        | 7          | 6        | 8        | 11       | 8          | 8        | 11         | 11       | 11         | 15       | 14         | 12        | 10         | 16       | 10       | 9         | 8        | 6        |
| Strongly oppose                        | 5        | 3          | 5        | 5        | 6        | 7          | 7        | 7          | 9        | 9          | 9        | 11         | 9         | 8          | 6        | 5        | 4         | 4        | 2        |
| <b>Total Democrats</b>                 | 466      | 472        | 503      | 459      | 469      | 451        | 458      | 441        | 443      | 399        | 295      | 389        | 402       | 378        | 369      | 359      | 388       | 330      | 971      |
|  | %        | %          | %        | %        | %        | %          | %        | %          | %        | %          | %        | %          | %         | %          | %        | %        | %         | %        | %        |
| Strongly support                       | 66       | 64         | 65       | 64       | 55       | 57         | 56       | 57         | 51       | 49         | 49       | 41         | 42        | 45         | 44       | 58       | 54        | 52       | 59       |
| Somewhat support                       | 30       | 29         | 31       | 31       | 35       | 34         | 36       | 37         | 37       | 39         | 35       | 43         | 40        | 45         | 42       | 31       | 37        | 39       | 34       |
| Somewhat oppose                        | 3        | 3          | 2        | 3        | 8        | 4          | 5        | 5          | 8        | 5          | 10       | 9          | 9         | 5          | 9        | 8        | 6         | 5        | 3        |
| Strongly oppose                        | 1        | 1          | 1        | 1        | 2        | 4          | 2        | 1          | 3        | 4          | 3        | 5          | 4         | 3          | 3        | 2        | 2         | 1        | 1        |
| <b>Liberal Democrats</b>               | 295      | 265        | 289      | 240      | 239      | 249        | 254      | 206        | 214      | 201        | 144      | 186        | 208       | 168        | 160      | 165      | 162       | 136      | 459      |
|  | %        | %          | %        | %        | %        | %          | %        | %          | %        | %          | %        | %          | %         | %          | %        | %        | %         | %        | %        |
| Strongly support                       | 73       | 68         | 77       | 77       | 65       | 67         | 67       | 72         | 61       | 58         | 62       | 51         | 51        | 51         | 64       | 66       | 66        | 64       | 66       |
| Somewhat support                       | 25       | 28         | 20       | 21       | 28       | 28         | 27       | 23         | 29       | 35         | 27       | 40         | 30        | 40         | 33       | 25       | 28        | 29       | 29       |
| Somewhat oppose                        | 2        | 2          | 2        | 0        | 5        | 2          | 4        | 3          | 6        | 1          | 6        | 4          | 8         | 4          | 2        | 6        | 6         | 4        | 3        |
| Strongly oppose                        | 1        | 1          | --       | 0        | 1        | 3          | 1        | 2          | 4        | 3          | 1        | 4          | 4         | 2          | 0        | 1        | 1         | 0        | 0        |
| <b>Moderate/Conservative Democrats</b> | 168      | 204        | 212      | 219      | 227      | 200        | 204      | 231        | 227      | 197        | 150      | 200        | 191       | 209        | 205      | 191      | 224       | 193      | 503      |
|  | %        | %          | %        | %        | %        | %          | %        | %          | %        | %          | %        | %          | %         | %          | %        | %        | %         | %        | %        |
| Strongly support                       | 54       | 61         | 50       | 50       | 44       | 47         | 44       | 45         | 42       | 42         | 37       | 32         | 32        | 41         | 31       | 52       | 45        | 43       | 54       |
| Somewhat support                       | 37       | 32         | 45       | 42       | 43       | 40         | 46       | 48         | 44       | 42         | 44       | 45         | 50        | 48         | 46       | 35       | 44        | 47       | 38       |
| Somewhat oppose                        | 6        | 3          | 2        | 6        | 10       | 6          | 6        | 7          | 9        | 8          | 13       | 13         | 11        | 7          | 14       | 10       | 7         | 5        | 4        |
| Strongly oppose                        | 2        | 2          | 3        | 1        | 2        | 5          | 4        | --         | 3        | 5          | 6        | 6          | 5         | 3          | 5        | 2        | 2         | 1        | 2        |

**Fund more research into renewable energy sources. (Cont'd.)**

**(Base: Registered American Voters 18+)**

| <i>Unweighted bases</i>                      | Dec 2018 | March 2018 | Oct 2017 | May 2017 | Nov 2016 | March 2016 | Oct 2015 | March 2015 | Oct 2014 | April 2014 | Nov 2013 | April 2013 | Sept 2012 | March 2012 | Nov 2011 | May 2011 | June 2010 | Jan 2010 | Nov 2008 |
|--|----------|------------|----------|----------|----------|------------|----------|------------|----------|------------|----------|------------|-----------|------------|----------|----------|-----------|----------|----------|
| <b>Independents</b>                          | 95       | 120        | 118      | 120      | 97       | 103        | 109      | 102        | 117      | 85         | 77       | 92         | 82        | 84         | 79       | 79       | 86        | 96       | 218      |
|  | %        | %          | %        | %        | %        | %          | %        | %          | %        | %          | %        | %          | %         | %          | %        | %        | %         | %        | %        |
| Strongly support                             | 44       | 40         | 46       | 49       | 35       | 45         | 40       | 37         | 30       | 25         | 32       | 26         | 33        | 43         | 42       | 39       | 49        | 51       | 50       |
| Somewhat support                             | 40       | 43         | 37       | 34       | 41       | 42         | 45       | 41         | 49       | 44         | 37       | 52         | 51        | 35         | 37       | 39       | 37        | 24       | 40       |
| Somewhat oppose                              | 10       | 7          | 5        | 12       | 16       | 9          | 8        | 17         | 9        | 12         | 18       | 14         | 10        | 6          | 10       | 14       | 8         | 10       | 2        |
| Strongly oppose                              | 6        | 7          | 8        | 5        | 8        | 4          | 7        | 6          | 11       | 17         | 11       | 5          | 5         | 8          | 10       | 8        | 6         | 12       | 3        |
| <b>Total Republicans</b>                     | 356      | 430        | 437      | 442      | 455      | 399        | 443      | 428        | 421      | 334        | 255      | 374        | 363       | 322        | 303      | 333      | 333       | 357      | 913      |
|  | %        | %          | %        | %        | %        | %          | %        | %          | %        | %          | %        | %          | %         | %          | %        | %        | %         | %        | %        |
| Strongly support                             | 25       | 27         | 26       | 24       | 22       | 25         | 31       | 19         | 24       | 13         | 17       | 16         | 17        | 22         | 27       | 39       | 27        | 33       | 45       |
| Somewhat support                             | 55       | 52         | 49       | 52       | 52       | 50         | 48       | 48         | 42       | 51         | 43       | 45         | 46        | 45         | 39       | 39       | 53        | 54       | 40       |
| Somewhat oppose                              | 9        | 14         | 13       | 13       | 14       | 13         | 10       | 16         | 17       | 18         | 22       | 18         | 17        | 15         | 24       | 12       | 12        | 9        | 9        |
| Strongly oppose                              | 8        | 5          | 9        | 10       | 10       | 11         | 11       | 15         | 17       | 16         | 15       | 19         | 16        | 16         | 8        | 8        | 7         | 3        | 3        |
| <b>Moderate/<br/>Liberal<br/>Republicans</b> | 116      | 149        | 165      | 127      | 143      | 132        | 137      | 119        | 126      | 103        | 72       | 103        | 100       | 92         | 93       | 91       | 82        | 102      | 304      |
|  | %        | %          | %        | %        | %        | %          | %        | %          | %        | %          | %        | %          | %         | %          | %        | %        | %         | %        | %        |
| Strongly support                             | 33       | 41         | 34       | 34       | 31       | 29         | 39       | 20         | 34       | 18         | 31       | 21         | 21        | 33         | 46       | 46       | 38        | 36       | 49       |
| Somewhat support                             | 48       | 45         | 50       | 53       | 57       | 53         | 52       | 56         | 47       | 62         | 48       | 53         | 58        | 53         | 32       | 42       | 45        | 54       | 42       |
| Somewhat oppose                              | 13       | 11         | 11       | 8        | 7        | 12         | 6        | 16         | 11       | 11         | 17       | 18         | 11        | 9          | 14       | 7        | 8         | 6        | 4        |
| Strongly oppose                              | 4        | 2          | 3        | 2        | 4        | 6          | 4        | 5          | 7        | 7          | 3        | 7          | 6         | 3          | 6        | 2        | 8         | 2        | 1        |
| <b>Conservative<br/>Republicans</b>          | 238      | 276        | 271      | 313      | 310      | 267        | 304      | 307        | 295      | 228        | 183      | 271        | 263       | 229        | 206      | 241      | 249       | 251      | 604      |
|  | %        | %          | %        | %        | %        | %          | %        | %          | %        | %          | %        | %          | %         | %          | %        | %        | %         | %        | %        |
| Strongly support                             | 21       | 19         | 21       | 20       | 17       | 23         | 27       | 18         | 19       | 10         | 10       | 14         | 14        | 18         | 16       | 36       | 24        | 32       | 42       |
| Somewhat support                             | 59       | 57         | 49       | 52       | 50       | 48         | 45       | 45         | 40       | 45         | 41       | 42         | 40        | 42         | 42       | 38       | 56        | 54       | 39       |
| Somewhat oppose                              | 8        | 16         | 14       | 14       | 19       | 13         | 12       | 16         | 19       | 22         | 24       | 19         | 21        | 18         | 29       | 14       | 13        | 11       | 11       |
| Strongly oppose                              | 11       | 7          | 14       | 13       | 14       | 14         | 15       | 19         | 21       | 21         | 21       | 24         | 21        | 22         | 10       | 11       | 7         | 3        | 4        |

**How much do you support or oppose the following policies?**  
**Provide tax rebates for people who purchase energy-efficient vehicles or solar panels.**

**(Base: Registered American Voters 18+)**

| <i>Unweighted bases</i>                | Dec 2018 | March 2018 | Oct 2017 | May 2017 | Nov 2016 | March 2016 | Oct 2015 | March 2015 | Oct 2014 | April 2014 | Nov 2013 | April 2013 | Sept 2012 | March 2012 | Nov 2011 | May 2011 | June 2010 | Jan 2010 | Nov 2008 |
|--|----------|------------|----------|----------|----------|------------|----------|------------|----------|------------|----------|------------|-----------|------------|----------|----------|-----------|----------|----------|
| <b>All Registered Voters</b>           | 966      | 1,067      | 1,109    | 1,070    | 1,061    | 1,004      | 1,070    | 1,025      | 1,045    | 860        | 669      | 889        | 885       | 849        | 813      | 827      | 857       | 856      | 2,203    |
|  | %        | %          | %        | %        | %        | %          | %        | %          | %        | %          | %        | %          | %         | %          | %        | %        | %         | %        | %        |
| Strongly support                       | 44       | 41         | 40       | 39       | 37       | 36         | 34       | 38         | 37       | 30         | 29       | 28         | 29        | 31         | 32       | 42       | 42        | 33       | 37       |
| Somewhat support                       | 41       | 44         | 43       | 45       | 44       | 44         | 45       | 44         | 41       | 48         | 43       | 46         | 43        | 44         | 46       | 39       | 41        | 49       | 45       |
| Somewhat oppose                        | 7        | 10         | 9        | 8        | 11       | 11         | 11       | 9          | 12       | 11         | 17       | 15         | 14        | 13         | 12       | 8        | 10        | 10       | 10       |
| Strongly oppose                        | 7        | 4          | 6        | 6        | 8        | 8          | 8        | 8          | 9        | 9          | 9        | 8          | 8         | 10         | 7        | 9        | 6         | 7        | 5        |
| <b>Total Democrats</b>                 | 466      | 472        | 503      | 459      | 469      | 451        | 458      | 441        | 443      | 399        | 295      | 389        | 402       | 378        | 369      | 359      | 388       | 330      | 971      |
|  | %        | %          | %        | %        | %        | %          | %        | %          | %        | %          | %        | %          | %         | %          | %        | %        | %         | %        | %        |
| Strongly support                       | 55       | 54         | 55       | 56       | 48       | 49         | 45       | 53         | 51       | 41         | 41       | 37         | 39        | 43         | 41       | 47       | 54        | 41       | 43       |
| Somewhat support                       | 40       | 37         | 39       | 39       | 41       | 42         | 42       | 40         | 35       | 46         | 42       | 46         | 45        | 44         | 46       | 40       | 33        | 53       | 45       |
| Somewhat oppose                        | 3        | 5          | 3        | 5        | 8        | 4          | 9        | 5          | 8        | 7          | 13       | 11         | 9         | 6          | 8        | 4        | 9         | 4        | 6        |
| Strongly oppose                        | 2        | 1          | 1        | 0        | 2        | 4          | 3        | 2          | 4        | 4          | 3        | 3          | 3         | 4          | 4        | 5        | 3         | 1        | 4        |
| <b>Liberal Democrats</b>               | 295      | 265        | 289      | 240      | 239      | 249        | 254      | 206        | 214      | 201        | 144      | 186        | 208       | 168        | 160      | 165      | 162       | 136      | 459      |
|  | %        | %          | %        | %        | %        | %          | %        | %          | %        | %          | %        | %          | %         | %          | %        | %        | %         | %        | %        |
| Strongly support                       | 63       | 60         | 64       | 68       | 53       | 58         | 55       | 66         | 56       | 51         | 53       | 46         | 45        | 44         | 55       | 51       | 64        | 50       | 49       |
| Somewhat support                       | 34       | 34         | 33       | 31       | 38       | 36         | 36       | 28         | 32       | 45         | 37       | 43         | 40        | 43         | 41       | 38       | 28        | 44       | 42       |
| Somewhat oppose                        | 3        | 4          | 2        | 1        | 8        | 3          | 6        | 4          | 7        | 2          | 7        | 10         | 7         | 8          | 2        | 2        | 8         | 5        | 5        |
| Strongly oppose                        | 1        | 1          | --       | --       | 1        | 3          | 3        | 1          | 4        | 3          | 2        | 0          | 1         | 3          | 2        | 4        | 0         | 1        | 2        |
| <b>Moderate/Conservative Democrats</b> | 168      | 204        | 212      | 219      | 227      | 200        | 204      | 231        | 227      | 197        | 150      | 200        | 191       | 209        | 205      | 191      | 224       | 193      | 503      |
|  | %        | %          | %        | %        | %        | %          | %        | %          | %        | %          | %        | %          | %         | %          | %        | %        | %         | %        | %        |
| Strongly support                       | 45       | 48         | 43       | 44       | 44       | 39         | 34       | 42         | 47       | 34         | 31       | 29         | 32        | 42         | 30       | 45       | 46        | 36       | 38       |
| Somewhat support                       | 49       | 41         | 48       | 47       | 44       | 48         | 49       | 50         | 38       | 47         | 45       | 49         | 49        | 46         | 50       | 42       | 37        | 60       | 49       |
| Somewhat oppose                        | 4        | 8          | 5        | 8        | 8        | 6          | 12       | 7          | 10       | 11         | 20       | 13         | 11        | 4          | 11       | 6        | 10        | 4        | 7        |
| Strongly oppose                        | 3        | 3          | 3        | 1        | 3        | 5          | 4        | 2          | 4        | 5          | 3        | 4          | 5         | 5          | 6        | 5        | 4         | 1        | 5        |



**Provide tax rebates for people who purchase energy-efficient vehicles or solar panels. (Cont'd.)****(Base: Registered American Voters 18+)**

| <i>Unweighted bases</i>                      | Dec 2018 | March 2018 | Oct 2017 | May 2017 | Nov 2016 | March 2016 | Oct 2015 | March 2015 | Oct 2014 | April 2014 | Nov 2013 | April 2013 | Sept 2012 | March 2012 | Nov 2011 | May 2011 | June 2010 | Jan 2010 | Nov 2008 |
|--|----------|------------|----------|----------|----------|------------|----------|------------|----------|------------|----------|------------|-----------|------------|----------|----------|-----------|----------|----------|
| <b>Independents</b>                          | 95       | 120        | 118      | 120      | 97       | 103        | 109      | 102        | 117      | 85         | 77       | 92         | 82        | 84         | 79       | 79       | 86        | 96       | 218      |
|  | %        | %          | %        | %        | %        | %          | %        | %          | %        | %          | %        | %          | %         | %          | %        | %        | %         | %        | %        |
| Strongly support                             | 40       | 34         | 31       | 45       | 29       | 31         | 29       | 30         | 32       | 29         | 29       | 23         | 28        | 21         | 36       | 33       | 51        | 35       | 43       |
| Somewhat support                             | 45       | 48         | 43       | 37       | 40       | 53         | 54       | 49         | 47       | 45         | 42       | 47         | 45        | 43         | 37       | 34       | 34        | 37       | 38       |
| Somewhat oppose                              | 7        | 9          | 11       | 9        | 21       | 11         | 6        | 10         | 11       | 13         | 16       | 17         | 19        | 12         | 15       | 13       | 7         | 17       | 11       |
| Strongly oppose                              | 8        | 7          | 10       | 8        | 10       | 4          | 9        | 12         | 10       | 12         | 11       | 8          | 6         | 15         | 11       | 21       | 8         | 11       | 4        |
| <b>Total Republicans</b>                     | 356      | 430        | 437      | 442      | 455      | 399        | 443      | 428        | 421      | 334        | 255      | 374        | 363       | 322        | 303      | 333      | 333       | 357      | 913      |
|  | %        | %          | %        | %        | %        | %          | %        | %          | %        | %          | %        | %          | %         | %          | %        | %        | %         | %        | %        |
| Strongly support                             | 26       | 26         | 25       | 19       | 24       | 23         | 25       | 23         | 22       | 18         | 17       | 19         | 17        | 18         | 23       | 36       | 22        | 28       | 29       |
| Somewhat support                             | 45       | 51         | 46       | 55       | 48       | 48         | 47       | 48         | 47       | 47         | 44       | 46         | 42        | 43         | 48       | 39       | 53        | 50       | 46       |
| Somewhat oppose                              | 13       | 15         | 15       | 12       | 13       | 15         | 14       | 14         | 16       | 17         | 20       | 18         | 20        | 22         | 16       | 11       | 14        | 11       | 15       |
| Strongly oppose                              | 15       | 7          | 12       | 12       | 15       | 13         | 12       | 15         | 13       | 16         | 16       | 16         | 16        | 17         | 11       | 12       | 10        | 11       | 7        |
| <b>Moderate/<br/>Liberal<br/>Republicans</b> | 116      | 149        | 165      | 127      | 143      | 132        | 137      | 119        | 126      | 103        | 72       | 103        | 100       | 92         | 93       | 91       | 82        | 102      | 304      |
|  | %        | %          | %        | %        | %        | %          | %        | %          | %        | %          | %        | %          | %         | %          | %        | %        | %         | %        | %        |
| Strongly support                             | 28       | 35         | 31       | 24       | 34       | 30         | 35       | 30         | 27       | 25         | 27       | 31         | 20        | 23         | 26       | 37       | 35        | 36       | 33       |
| Somewhat support                             | 49       | 50         | 46       | 56       | 48       | 49         | 50       | 48         | 58       | 55         | 48       | 41         | 48        | 48         | 52       | 48       | 53        | 49       | 44       |
| Somewhat oppose                              | 15       | 11         | 13       | 13       | 9        | 15         | 12       | 16         | 8        | 11         | 18       | 19         | 22        | 25         | 13       | 7        | 7         | 7        | 14       |
| Strongly oppose                              | 6        | 2          | 9        | 4        | 7        | 6          | 2        | 5          | 5        | 8          | 7        | 7          | 4         | 3          | 7        | 5        | 5         | 8        | 4        |
| <b>Conservative<br/>Republicans</b>          | 238      | 276        | 271      | 313      | 310      | 267        | 304      | 307        | 295      | 228        | 183      | 271        | 263       | 229        | 206      | 241      | 249       | 251      | 604      |
|  | %        | %          | %        | %        | %        | %          | %        | %          | %        | %          | %        | %          | %         | %          | %        | %        | %         | %        | %        |
| Strongly support                             | 25       | 21         | 21       | 17       | 19       | 18         | 21       | 19         | 20       | 14         | 12       | 15         | 16        | 16         | 20       | 36       | 19        | 24       | 27       |
| Somewhat support                             | 42       | 52         | 46       | 55       | 47       | 47         | 46       | 48         | 42       | 43         | 42       | 48         | 39        | 41         | 45       | 35       | 52        | 49       | 47       |
| Somewhat oppose                              | 12       | 17         | 17       | 12       | 15       | 16         | 14       | 13         | 20       | 20         | 22       | 17         | 19        | 20         | 19       | 13       | 17        | 13       | 15       |
| Strongly oppose                              | 20       | 9          | 15       | 15       | 18       | 18         | 18       | 20         | 17       | 20         | 21       | 19         | 23        | 22         | 13       | 14       | 11        | 13       | 8        |



**Do you currently have the option to purchase 100% clean, renewable electricity from your local utility company or other electricity provider?**

|  |             | Democrats |         |             |           | Republicans |             |         |
|--|-------------|-----------|---------|-------------|-----------|-------------|-------------|---------|
|  | Full Sample | Total Dem | Lib Dem | Mod/Con Dem | Ind/Other | Total Rep   | Mod/Lib Rep | Con Rep |
| Unweighted Base  | 1,114       | 466       | 295     | 168         | 95        | 356         | 116         | 238     |
|  | %           | %         | %       | %           | %         | %           | %           | %       |
| Yes  | 15          | 17        | 18      | 15          | 10        | 16          | 16          | 16      |
| No   | 34          | 37        | 36      | 38          | 33        | 33          | 37          | 32      |
| Does not apply – I do not get electricity from a utility company | 3           | 3         | 4       | 1           | 2         | 3           | 6           | 1       |
| Don't know   | 48          | 43        | 42      | 45          | 56        | 47          | 41          | 51      |

**Are you currently purchasing 100% clean, renewable electricity from your local utility company or other electricity provider?**

|  |             | Democrats |         |             |           | Republicans |             |         |
|--|-------------|-----------|---------|-------------|-----------|-------------|-------------|---------|
|  | Full Sample | Total Dem | Lib Dem | Mod/Con Dem | Ind/Other | Total Rep   | Mod/Lib Rep | Con Rep |
| Unweighted Base  | 1,114       | 466       | 295     | 168         | 95        | 356         | 116         | 238     |
|  | %           | %         | %       | %           | %         | %           | %           | %       |
| Yes  | 5           | 7         | 6       | 7           | 2         | 6           | 4           | 6       |
| No, but I would like to  | 4           | 6         | 8       | 4           | 4         | 2           | 2           | 1       |
| No, and I am not interested in doing so  | 3           | 3         | 3       | 4           | 2         | 6           | 6           | 6       |
| Don't know   | 2           | 0         | 1       | -           | 1         | 2           | 2           | 2       |
| Question not administered – because they don't have the option, don't know, or do not get electricity from utility co. | 85          | 83        | 82      | 85          | 90        | 83          | 84          | 84      |

**[Only for respondents who answered “Yes” to “Do you currently have the option...” above] Are you currently purchasing 100% clean, renewable electricity from your local utility company or other electricity provider?**

|   | Have option to purchase: “Yes” |
|---|--------------------------------|
| Unweighted Base                         | 163                            |
|   | %                              |
| Yes                                     | 36                             |
| No, but I would like to                 | 30                             |
| No, and I am not interested in doing so | 22                             |
| Don't know                              | 10                             |

**[Only for respondents who answered “No” or “Don’t know” to “Do you currently have the option...” above] If your local utility company or other electricity provider did provide the option to purchase 100% clean, renewable electricity, how likely would you be to purchase it?**

|                             |  | Democrats    |            |                    |               | Republicans  |                    |            |
|-----------------------------|--|--------------|------------|--------------------|---------------|--------------|--------------------|------------|
|                             | Have option to purchase:<br>“No” or “Don’t know” | Total<br>Dem | Lib<br>Dem | Mod/<br>Con<br>Dem | Ind/<br>Other | Total<br>Rep | Mod/<br>Lib<br>Rep | Con<br>Rep |
| Unweighted Base             | 913  | 371          | 229        | 139                | 82            | 285          | 91                 | 194        |
|                             | %  | %            | %          | %                  | %             | %            | %                  | %          |
| <b>Very/Somewhat likely</b> | <b>61</b>  | <b>70</b>    | <b>78</b>  | <b>60</b>          | <b>60</b>     | <b>53</b>    | <b>48</b>          | <b>55</b>  |
| Very likely                 | 18   | 28           | 38         | 14                 | 15            | 9            | 15                 | 6          |
| Somewhat likely             | 44   | 42           | 39         | 46                 | 45            | 44           | 34                 | 49         |
| Somewhat unlikely           | 9  | 6            | 6          | 7                  | 6             | 16           | 17                 | 15         |
| Very unlikely               | 4  | 2            | 2          | 2                  | 2             | 6            | 2                  | 9          |
| Don't know                  | 25   | 20           | 13         | 30                 | 32            | 25           | 32                 | 22         |

**How much more, if any amount, would you be willing to pay each month on your electricity bill to purchase 100% of your electricity from clean, renewable sources (such as wind and solar)? If you would not be willing to pay more, please enter 0.**

**I would be willing to pay \$\_\_\_ more per month**

|   |             | Democrats    |            |                    |               | Republicans  |                    |            |
|---|-------------|--------------|------------|--------------------|---------------|--------------|--------------------|------------|
|   | Full Sample | Total<br>Dem | Lib<br>Dem | Mod/<br>Con<br>Dem | Ind/<br>Other | Total<br>Rep | Mod/<br>Lib<br>Rep | Con<br>Rep |
| Unweighted Base   | 1,114       | 466          | 295        | 168                | 95            | 356          | 116                | 238        |
|   | %           | %            | %          | %                  | %             | %            | %                  | %          |
| \$0 more per month  | 47          | 36           | 32         | 43                 | 53            | 60           | 56                 | 64         |
| \$1 to \$10 more per month                                    | 18          | 23           | 26         | 19                 | 15            | 20           | 26                 | 17         |
| \$11 to \$30 more per month                                   | 17          | 22           | 24         | 18                 | 19            | 12           | 10                 | 13         |
| \$31 to \$100 more per month                                  | 14          | 16           | 14         | 17                 | 7             | 7            | 6                  | 6          |
| Excluded outliers (+3 SD from mean)                           | 2           | 2            | 2          | 2                  | 2             | 0            | 0                  | 0          |
| Non-response  | 2           | 2            | 2          | 1                  | 4             | 1            | 1                  | 0          |
| <b>Of those who gave an estimate,<br/>excluding outliers:</b> |             |              |            |                    |               |              |                    |            |
| Mean  | \$1         | \$10         | \$10       | \$5                | \$0           | \$0          | \$0                | \$0        |
| Median  | 15          | 17           | 16         | 18                 | 11            | 9            | 8                  | 9          |

**To the best of your knowledge, does electricity produced from each of the following energy sources cost more, less, or about the same as electricity produced by burning coal?**

### Solar

|                                 |             | Democrats |           |              |            | Republicans |              |           |
|---------------------------------|-------------|-----------|-----------|--------------|------------|-------------|--------------|-----------|
|                                 | Full Sample | Total Dem | Lib Dem   | Mod/ Con Dem | Ind/ Other | Total Rep   | Mod/ Lib Rep | Con Rep   |
| Unweighted Base                 | 1,114       | 466       | 295       | 168          | 95         | 356         | 116          | 238       |
|                                 | %           | %         | %         | %            | %          | %           | %            | %         |
| <b>Costs much/somewhat more</b> | <b>25</b>   | <b>20</b> | <b>19</b> | <b>23</b>    | <b>15</b>  | <b>18</b>   | <b>21</b>    | <b>44</b> |
| Costs much more than coal       | 9           | 5         | 3         | 8            | 4          | 16          | 4            | 23        |
| Costs somewhat more than coal   | 16          | 16        | 16        | 15           | 10         | 2           | 17           | 21        |
| Costs about the same as coal    | 6           | 6         | 9         | 3            | 6          | 6           | 8            | 5         |
| <b>Costs much/somewhat less</b> | <b>38</b>   | <b>48</b> | <b>47</b> | <b>48</b>    | <b>38</b>  | <b>29</b>   | <b>35</b>    | <b>25</b> |
| Costs somewhat less than coal   | 13          | 16        | 14        | 21           | 11         | 12          | 12           | 13        |
| Costs much less than coal       | 24          | 31        | 34        | 27           | 27         | 17          | 23           | 12        |
| Don't know                      | 30          | 25        | 25        | 23           | 41         | 29          | 35           | 26        |

### Wind

|                                 |             | Democrats |           |              |            | Republicans |              |           |
|---------------------------------|-------------|-----------|-----------|--------------|------------|-------------|--------------|-----------|
|                                 | Full Sample | Total Dem | Lib Dem   | Mod/ Con Dem | Ind/ Other | Total Rep   | Mod/ Lib Rep | Con Rep   |
| Unweighted Base                 | 1,114       | 466       | 295       | 168          | 95         | 356         | 116          | 238       |
|                                 | %           | %         | %         | %            | %          | %           | %            | %         |
| <b>Costs much/somewhat more</b> | <b>19</b>   | <b>12</b> | <b>13</b> | <b>11</b>    | <b>14</b>  | <b>17</b>   | <b>22</b>    | <b>37</b> |
| Costs much more than coal       | 8           | 4         | 4         | 5            | 4          | 15          | 8            | 19        |
| Costs somewhat more than coal   | 11          | 8         | 10        | 5            | 10         | 2           | 14           | 18        |
| Costs about the same as coal    | 8           | 6         | 6         | 8            | 9          | 7           | 5            | 7         |
| <b>Costs much/somewhat less</b> | <b>38</b>   | <b>49</b> | <b>51</b> | <b>46</b>    | <b>32</b>  | <b>31</b>   | <b>39</b>    | <b>26</b> |
| Costs somewhat less than coal   | 13          | 15        | 16        | 14           | 11         | 14          | 14           | 13        |
| Costs much less than coal       | 25          | 34        | 35        | 32           | 22         | 17          | 25           | 13        |
| Don't know                      | 34          | 31        | 29        | 33           | 45         | 30          | 35           | 28        |

To the best of your knowledge, does electricity produced from each of the following energy sources cost more, less, or about the same as electricity produced by burning coal? (Cont'd.)

### Geothermal

|                                 |             | Democrats |           |              |            | Republicans |              |           |
|---------------------------------|-------------|-----------|-----------|--------------|------------|-------------|--------------|-----------|
|                                 | Full Sample | Total Dem | Lib Dem   | Mod/ Con Dem | Ind/ Other | Total Rep   | Mod/ Lib Rep | Con Rep   |
| Unweighted Base                 | 1,114       | 466       | 295       | 168          | 95         | 356         | 116          | 238       |
|                                 | %           | %         | %         | %            | %          | %           | %            | %         |
| <b>Costs much/somewhat more</b> | <b>15</b>   | <b>15</b> | <b>15</b> | <b>15</b>    | <b>15</b>  | <b>7</b>    | <b>17</b>    | <b>20</b> |
| Costs much more than coal       | 5           | 6         | 6         | 5            | 4          | 6           | 3            | 7         |
| Costs somewhat more than coal   | 10          | 9         | 9         | 9            | 12         | 1           | 15           | 13        |
| Costs about the same as coal    | 8           | 5         | 6         | 5            | 9          | 11          | 9            | 12        |
| <b>Costs much/somewhat less</b> | <b>21</b>   | <b>26</b> | <b>29</b> | <b>23</b>    | <b>24</b>  | <b>20</b>   | <b>18</b>    | <b>19</b> |
| Costs somewhat less than coal   | 10          | 11        | 13        | 10           | 7          | 11          | 8            | 11        |
| Costs much less than coal       | 11          | 15        | 16        | 13           | 17         | 9           | 10           | 8         |
| Don't know                      | 55          | 53        | 50        | 56           | 50         | 51          | 56           | 49        |

### Natural gas

|                                 |             | Democrats |           |              |            | Republicans |              |           |
|---------------------------------|-------------|-----------|-----------|--------------|------------|-------------|--------------|-----------|
|                                 | Full Sample | Total Dem | Lib Dem   | Mod/ Con Dem | Ind/ Other | Total Rep   | Mod/ Lib Rep | Con Rep   |
| Unweighted Base                 | 1,114       | 466       | 295       | 168          | 95         | 356         | 116          | 238       |
|                                 | %           | %         | %         | %            | %          | %           | %            | %         |
| <b>Costs much/somewhat more</b> | <b>15</b>   | <b>10</b> | <b>7</b>  | <b>14</b>    | <b>7</b>   | <b>4</b>    | <b>17</b>    | <b>23</b> |
| Costs much more than coal       | 4           | 4         | 2         | 7            | --         | 2           | 2            | 2         |
| Costs somewhat more than coal   | 11          | 6         | 5         | 8            | 7          | 2           | 14           | 21        |
| Costs about the same as coal    | 17          | 17        | 20        | 13           | 19         | 14          | 9            | 17        |
| <b>Costs much/somewhat less</b> | <b>28</b>   | <b>35</b> | <b>37</b> | <b>33</b>    | <b>34</b>  | <b>32</b>   | <b>37</b>    | <b>29</b> |
| Costs somewhat less than coal   | 17          | 19        | 21        | 16           | 24         | 22          | 24           | 21        |
| Costs much less than coal       | 12          | 16        | 16        | 17           | 10         | 10          | 13           | 8         |
| Don't know                      | 38          | 37        | 37        | 36           | 40         | 33          | 38           | 31        |



**To the best of your knowledge, does electricity produced from each of the following energy sources cost more, less, or about the same as electricity produced by burning coal? (Cont'd.)**

### Nuclear

|                                 |             | Democrats |           |              |            | Republicans |              |           |
|---------------------------------|-------------|-----------|-----------|--------------|------------|-------------|--------------|-----------|
|                                 | Full Sample | Total Dem | Lib Dem   | Mod/ Con Dem | Ind/ Other | Total Rep   | Mod/ Lib Rep | Con Rep   |
| Unweighted Base                 | 1,114       | 466       | 295       | 168          | 95         | 356         | 116          | 238       |
|                                 | %           | %         | %         | %            | %          | %           | %            | %         |
| <b>Costs much/somewhat more</b> | <b>23</b>   | <b>25</b> | <b>24</b> | <b>26</b>    | <b>22</b>  | <b>13</b>   | <b>18</b>    | <b>24</b> |
| Costs much more than coal       | 12          | 12        | 11        | 15           | 9          | 12          | 8            | 14        |
| Costs somewhat more than coal   | 11          | 12        | 13        | 11           | 13         | 1           | 10           | 9         |
| Costs about the same as coal    | 7           | 6         | 7         | 6            | 5          | 7           | 7            | 8         |
| <b>Costs much/somewhat less</b> | <b>21</b>   | <b>22</b> | <b>26</b> | <b>16</b>    | <b>23</b>  | <b>30</b>   | <b>25</b>    | <b>31</b> |
| Costs somewhat less than coal   | 11          | 13        | 15        | 10           | 13         | 13          | 11           | 13        |
| Costs much less than coal       | 11          | 9         | 11        | 6            | 10         | 17          | 15           | 17        |
| Don't know                      | 47          | 46        | 43        | 50           | 50         | 41          | 50           | 37        |

### Hydroelectric dams

|                                 |             | Democrats |           |              |            | Republicans |              |           |
|---------------------------------|-------------|-----------|-----------|--------------|------------|-------------|--------------|-----------|
|                                 | Full Sample | Total Dem | Lib Dem   | Mod/ Con Dem | Ind/ Other | Total Rep   | Mod/ Lib Rep | Con Rep   |
| Unweighted Base                 | 1,114       | 466       | 295       | 168          | 95         | 356         | 116          | 238       |
|                                 | %           | %         | %         | %            | %          | %           | %            | %         |
| <b>Costs much/somewhat more</b> | <b>13</b>   | <b>9</b>  | <b>10</b> | <b>8</b>     | <b>9</b>   | <b>6</b>    | <b>13</b>    | <b>20</b> |
| Costs much more than coal       | 4           | 4         | 4         | 5            | 3          | 5           | 3            | 5         |
| Costs somewhat more than coal   | 8           | 5         | 7         | 3            | 5          | 1           | 10           | 15        |
| Costs about the same as coal    | 8           | 7         | 7         | 6            | 8          | 10          | 9            | 11        |
| <b>Costs much/somewhat less</b> | <b>31</b>   | <b>37</b> | <b>38</b> | <b>36</b>    | <b>35</b>  | <b>31</b>   | <b>30</b>    | <b>31</b> |
| Costs somewhat less than coal   | 17          | 16        | 17        | 16           | 22         | 19          | 21           | 18        |
| Costs much less than coal       | 14          | 21        | 21        | 20           | 13         | 12          | 9            | 13        |
| Don't know                      | 46          | 45        | 43        | 47           | 49         | 41          | 48           | 38        |

**To the best of your knowledge, does electricity produced from each of the following energy sources cost more, less, or about the same as electricity produced by burning coal? (Cont'd.)**

**Methane gas emitted by landfills**

|                                 |             | Democrats |           |              |            | Republicans |              |           |
|---------------------------------|-------------|-----------|-----------|--------------|------------|-------------|--------------|-----------|
|                                 | Full Sample | Total Dem | Lib Dem   | Mod/ Con Dem | Ind/ Other | Total Rep   | Mod/ Lib Rep | Con Rep   |
| Unweighted Base                 | 1,114       | 466       | 295       | 168          | 95         | 356         | 116          | 238       |
|                                 | %           | %         | %         | %            | %          | %           | %            | %         |
| <b>Costs much/somewhat more</b> | <b>15</b>   | <b>11</b> | <b>11</b> | <b>12</b>    | <b>7</b>   | <b>7</b>    | <b>16</b>    | <b>20</b> |
| Costs much more than coal       | 5           | 5         | 4         | 5            | 1          | 5           | 4            | 6         |
| Costs somewhat more than coal   | 9           | 7         | 7         | 7            | 6          | 1           | 12           | 14        |
| Costs about the same as coal    | 10          | 9         | 9         | 10           | 9          | 10          | 9            | 11        |
| <b>Costs much/somewhat less</b> | <b>19</b>   | <b>22</b> | <b>23</b> | <b>22</b>    | <b>18</b>  | <b>21</b>   | <b>21</b>    | <b>20</b> |
| Costs somewhat less than coal   | 11          | 12        | 13        | 10           | 11         | 13          | 13           | 13        |
| Costs much less than coal       | 8           | 10        | 9         | 11           | 7          | 8           | 8            | 7         |
| Don't know                      | 56          | 56        | 58        | 54           | 66         | 50          | 55           | 48        |

**Trash-to-energy plants**

|                                 |             | Democrats |           |              |            | Republicans |              |           |
|---------------------------------|-------------|-----------|-----------|--------------|------------|-------------|--------------|-----------|
|                                 | Full Sample | Total Dem | Lib Dem   | Mod/ Con Dem | Ind/ Other | Total Rep   | Mod/ Lib Rep | Con Rep   |
| Unweighted Base                 | 1,114       | 466       | 295       | 168          | 95         | 356         | 116          | 238       |
|                                 | %           | %         | %         | %            | %          | %           | %            | %         |
| <b>Costs much/somewhat more</b> | <b>17</b>   | <b>13</b> | <b>16</b> | <b>9</b>     | <b>10</b>  | <b>11</b>   | <b>16</b>    | <b>32</b> |
| Costs much more than coal       | 6           | 4         | 5         | 2            | 4          | 10          | 5            | 12        |
| Costs somewhat more than coal   | 11          | 9         | 10        | 7            | 6          | 2           | 11           | 20        |
| Costs about the same as coal    | 9           | 10        | 8         | 11           | 5          | 7           | 8            | 7         |
| <b>Costs much/somewhat less</b> | <b>18</b>   | <b>22</b> | <b>24</b> | <b>20</b>    | <b>20</b>  | <b>13</b>   | <b>15</b>    | <b>12</b> |
| Costs somewhat less than coal   | 10          | 11        | 12        | 10           | 11         | 9           | 10           | 9         |
| Costs much less than coal       | 8           | 11        | 12        | 10           | 9          | 4           | 5            | 3         |
| Don't know                      | 55          | 55        | 52        | 58           | 65         | 52          | 61           | 48        |

**To the best of your knowledge, does electricity produced from each of the following energy sources cost more, less, or about the same as electricity produced by burning coal? (Cont'd.)**

**Wood-fueled power plants**

|                                 |             | Democrats |           |             |           | Republicans |             |           |
|---------------------------------|-------------|-----------|-----------|-------------|-----------|-------------|-------------|-----------|
|                                 | Full Sample | Total Dem | Lib Dem   | Mod/Con Dem | Ind/Other | Total Rep   | Mod/Lib Rep | Con Rep   |
| Unweighted Base                 | 1,114       | 466       | 295       | 168         | 95        | 356         | 116         | 238       |
|                                 | %           | %         | %         | %           | %         | %           | %           | %         |
| <b>Costs much/somewhat more</b> | <b>22</b>   | <b>19</b> | <b>17</b> | <b>20</b>   | <b>16</b> | <b>12</b>   | <b>23</b>   | <b>32</b> |
| Costs much more than coal       | 9           | 7         | 5         | 10          | 7         | 10          | 7           | 12        |
| Costs somewhat more than coal   | 13          | 12        | 12        | 10          | 9         | 2           | 16          | 20        |
| Costs about the same as coal    | 13          | 14        | 14        | 13          | 9         | 14          | 12          | 15        |
| <b>Costs much/somewhat less</b> | <b>12</b>   | <b>15</b> | <b>16</b> | <b>13</b>   | <b>13</b> | <b>11</b>   | <b>15</b>   | <b>8</b>  |
| Costs somewhat less than coal   | 7           | 9         | 10        | 7           | 11        | 6           | 10          | 5         |
| Costs much less than coal       | 5           | 6         | 6         | 6           | 1         | 5           | 6           | 3         |
| Don't know                      | 51          | 52        | 52        | 52          | 63        | 46          | 50          | 45        |

**Over the next 10 years, do you think the cost of producing electricity from each of the following energy sources will be more expensive, less expensive, or about the same as today?**

### Solar

|                                     |             | Democrats |           |              |            | Republicans |              |           |
|-------------------------------------|-------------|-----------|-----------|--------------|------------|-------------|--------------|-----------|
|                                     | Full Sample | Total Dem | Lib Dem   | Mod/ Con Dem | Ind/ Other | Total Rep   | Mod/ Lib Rep | Con Rep   |
| Unweighted Base                     | 1,114       | 466       | 295       | 168          | 95         | 356         | 116          | 238       |
|                                     | %           | %         | %         | %            | %          | %           | %            | %         |
| <b>Much/somewhat more expensive</b> | <b>13</b>   | <b>9</b>  | <b>4</b>  | <b>15</b>    | <b>9</b>   | <b>16</b>   | <b>12</b>    | <b>19</b> |
| Much more expensive in 10 years     | 5           | 3         | 2         | 4            | 3          | 5           | 4            | 6         |
| Somewhat more expensive in 10 years | 8           | 5         | 2         | 11           | 6          | 11          | 8            | 13        |
| About the same in 10 years          | 13          | 10        | 7         | 15           | 7          | 16          | 10           | 18        |
| <b>Much/somewhat less expensive</b> | <b>48</b>   | <b>60</b> | <b>50</b> | <b>24</b>    | <b>51</b>  | <b>44</b>   | <b>45</b>    | <b>43</b> |
| Somewhat less expensive in 10 years | 21          | 23        | 2         | 2            | 28         | 27          | 25           | 29        |
| Much less expensive in 10 years     | 27          | 37        | 47        | 22           | 23         | 17          | 20           | 15        |
| Don't know                          | 25          | 21        | 18        | 24           | 32         | 24          | 32           | 20        |

### Wind

|                                     |             | Democrats |           |              |            | Republicans |              |           |
|-------------------------------------|-------------|-----------|-----------|--------------|------------|-------------|--------------|-----------|
|                                     | Full Sample | Total Dem | Lib Dem   | Mod/ Con Dem | Ind/ Other | Total Rep   | Mod/ Lib Rep | Con Rep   |
| Unweighted Base                     | 1,114       | 466       | 295       | 168          | 95         | 356         | 116          | 238       |
|                                     | %           | %         | %         | %            | %          | %           | %            | %         |
| <b>Much/somewhat more expensive</b> | <b>12</b>   | <b>8</b>  | <b>5</b>  | <b>12</b>    | <b>6</b>   | <b>17</b>   | <b>8</b>     | <b>21</b> |
| Much more expensive in 10 years     | 4           | 3         | 2         | 4            | 1          | 4           | 2            | 5         |
| Somewhat more expensive in 10 years | 8           | 5         | 3         | 7            | 5          | 13          | 7            | 16        |
| About the same in 10 years          | 15          | 12        | 9         | 16           | 8          | 21          | 18           | 21        |
| <b>Much/somewhat less expensive</b> | <b>45</b>   | <b>56</b> | <b>40</b> | <b>27</b>    | <b>51</b>  | <b>36</b>   | <b>39</b>    | <b>34</b> |
| Somewhat less expensive in 10 years | 21          | 24        | 3         | 2            | 35         | 22          | 20           | 23        |
| Much less expensive in 10 years     | 24          | 33        | 38        | 25           | 16         | 14          | 19           | 12        |
| Don't know                          | 27          | 22        | 20        | 26           | 31         | 26          | 34           | 23        |

**Over the next 10 years, do you think the cost of producing electricity from each of the following energy sources will be more expensive, less expensive, or about the same as today? (Cont'd.)**

### Geothermal

|                                     |             | Democrats |           |              |            | Republicans |              |           |
|-------------------------------------|-------------|-----------|-----------|--------------|------------|-------------|--------------|-----------|
|                                     | Full Sample | Total Dem | Lib Dem   | Mod/ Con Dem | Ind/ Other | Total Rep   | Mod/ Lib Rep | Con Rep   |
| Unweighted Base                     | 1,114       | 466       | 295       | 168          | 95         | 356         | 116          | 238       |
|                                     | %           | %         | %         | %            | %          | %           | %            | %         |
| <b>Much/somewhat more expensive</b> | <b>13</b>   | <b>11</b> | <b>9</b>  | <b>15</b>    | <b>10</b>  | <b>15</b>   | <b>7</b>     | <b>20</b> |
| Much more expensive in 10 years     | 4           | 4         | 3         | 4            | 2          | 3           | 1            | 5         |
| Somewhat more expensive in 10 years | 9           | 7         | 5         | 11           | 8          | 12          | 6            | 16        |
| About the same in 10 years          | 16          | 16        | 18        | 12           | 17         | 19          | 14           | 22        |
| <b>Much/somewhat less expensive</b> | <b>23</b>   | <b>31</b> | <b>18</b> | <b>10</b>    | <b>21</b>  | <b>23</b>   | <b>29</b>    | <b>19</b> |
| Somewhat less expensive in 10 years | 14          | 18        | 2         | 2            | 12         | 15          | 19           | 13        |
| Much less expensive in 10 years     | 9           | 13        | 16        | 8            | 9          | 7           | 10           | 6         |
| Don't know                          | 45          | 41        | 37        | 45           | 51         | 42          | 48           | 39        |

### Natural gas

|                                     |             | Democrats |           |              |            | Republicans |              |           |
|-------------------------------------|-------------|-----------|-----------|--------------|------------|-------------|--------------|-----------|
|                                     | Full Sample | Total Dem | Lib Dem   | Mod/ Con Dem | Ind/ Other | Total Rep   | Mod/ Lib Rep | Con Rep   |
| Unweighted Base                     | 1,114       | 466       | 295       | 168          | 95         | 356         | 116          | 238       |
|                                     | %           | %         | %         | %            | %          | %           | %            | %         |
| <b>Much/somewhat more expensive</b> | <b>27</b>   | <b>26</b> | <b>26</b> | <b>25</b>    | <b>17</b>  | <b>31</b>   | <b>28</b>    | <b>32</b> |
| Much more expensive in 10 years     | 9           | 8         | 7         | 10           | 4          | 7           | 9            | 6         |
| Somewhat more expensive in 10 years | 18          | 18        | 19        | 15           | 13         | 24          | 19           | 26        |
| About the same in 10 years          | 20          | 18        | 18        | 19           | 25         | 26          | 19           | 31        |
| <b>Much/somewhat less expensive</b> | <b>18</b>   | <b>25</b> | <b>13</b> | <b>7</b>     | <b>17</b>  | <b>14</b>   | <b>17</b>    | <b>12</b> |
| Somewhat less expensive in 10 years | 12          | 17        | 2         | 2            | 12         | 11          | 11           | 11        |
| Much less expensive in 10 years     | 7           | 9         | 12        | 5            | 5          | 4           | 6            | 2         |
| Don't know                          | 32          | 29        | 28        | 28           | 40         | 28          | 33           | 25        |

**Over the next 10 years, do you think the cost of producing electricity from each of the following energy sources will be more expensive, less expensive, or about the same as today? (Cont'd.)**

### Nuclear

|                                     |             | Democrats |           |              |            | Republicans |              |           |
|-------------------------------------|-------------|-----------|-----------|--------------|------------|-------------|--------------|-----------|
|                                     | Full Sample | Total Dem | Lib Dem   | Mod/ Con Dem | Ind/ Other | Total Rep   | Mod/ Lib Rep | Con Rep   |
| Unweighted Base                     | 1,114       | 466       | 295       | 168          | 95         | 356         | 116          | 238       |
|                                     | %           | %         | %         | %            | %          | %           | %            | %         |
| <b>Much/somewhat more expensive</b> | <b>25</b>   | <b>24</b> | <b>20</b> | <b>29</b>    | <b>19</b>  | <b>24</b>   | <b>17</b>    | <b>29</b> |
| Much more expensive in 10 years     | 12          | 12        | 11        | 13           | 8          | 10          | 7            | 12        |
| Somewhat more expensive in 10 years | 13          | 12        | 9         | 17           | 11         | 14          | 10           | 17        |
| About the same in 10 years          | 19          | 21        | 24        | 16           | 20         | 26          | 30           | 24        |
| <b>Much/somewhat less expensive</b> | <b>16</b>   | <b>17</b> | <b>11</b> | <b>4</b>     | <b>16</b>  | <b>15</b>   | <b>11</b>    | <b>16</b> |
| Somewhat less expensive in 10 years | 9           | 10        | 1         | 1            | 7          | 10          | 8            | 10        |
| Much less expensive in 10 years     | 7           | 7         | 10        | 3            | 9          | 5           | 3            | 5         |
| Don't know                          | 39          | 36        | 32        | 42           | 43         | 34          | 42           | 31        |

### Hydroelectric dams

|                                     |             | Democrats |           |              |            | Republicans |              |           |
|-------------------------------------|-------------|-----------|-----------|--------------|------------|-------------|--------------|-----------|
|                                     | Full Sample | Total Dem | Lib Dem   | Mod/ Con Dem | Ind/ Other | Total Rep   | Mod/ Lib Rep | Con Rep   |
| Unweighted Base                     | 1,114       | 466       | 295       | 168          | 95         | 356         | 116          | 238       |
|                                     | %           | %         | %         | %            | %          | %           | %            | %         |
| <b>Much/somewhat more expensive</b> | <b>17</b>   | <b>15</b> | <b>15</b> | <b>15</b>    | <b>13</b>  | <b>23</b>   | <b>19</b>    | <b>25</b> |
| Much more expensive in 10 years     | 6           | 5         | 4         | 6            | 5          | 6           | 7            | 5         |
| Somewhat more expensive in 10 years | 11          | 10        | 11        | 9            | 8          | 17          | 12           | 20        |
| About the same in 10 years          | 23          | 25        | 25        | 25           | 21         | 26          | 22           | 27        |
| <b>Much/somewhat less expensive</b> | <b>21</b>   | <b>26</b> | <b>16</b> | <b>7</b>     | <b>21</b>  | <b>16</b>   | <b>18</b>    | <b>15</b> |
| Somewhat less expensive in 10 years | 13          | 15        | 2         | 1            | 14         | 12          | 10           | 13        |
| Much less expensive in 10 years     | 8           | 11        | 14        | 6            | 8          | 4           | 8            | 2         |
| Don't know                          | 38          | 32        | 30        | 36           | 43         | 36          | 40           | 33        |



**Over the next 10 years, do you think the cost of producing electricity from each of the following energy sources will be more expensive, less expensive, or about the same as today? (Cont'd.)**

### **Methane gas emitted by landfills**

|                                     |             | Democrats |           |              |            | Republicans |              |           |
|-------------------------------------|-------------|-----------|-----------|--------------|------------|-------------|--------------|-----------|
|                                     | Full Sample | Total Dem | Lib Dem   | Mod/ Con Dem | Ind/ Other | Total Rep   | Mod/ Lib Rep | Con Rep   |
| Unweighted Base                     | 1,114       | 466       | 295       | 168          | 95         | 356         | 116          | 238       |
|                                     | %           | %         | %         | %            | %          | %           | %            | %         |
| <b>Much/somewhat more expensive</b> | <b>17</b>   | <b>13</b> | <b>10</b> | <b>16</b>    | <b>10</b>  | <b>19</b>   | <b>11</b>    | <b>23</b> |
| Much more expensive in 10 years     | 6           | 3         | 3         | 4            | 1          | 5           | 3            | 5         |
| Somewhat more expensive in 10 years | 11          | 9         | 8         | 12           | 8          | 14          | 8            | 18        |
| About the same in 10 years          | 16          | 19        | 19        | 18           | 14         | 18          | 19           | 17        |
| <b>Much/somewhat less expensive</b> | <b>19</b>   | <b>22</b> | <b>10</b> | <b>6</b>     | <b>20</b>  | <b>21</b>   | <b>20</b>    | <b>21</b> |
| Somewhat less expensive in 10 years | 13          | 15        | 2         | 1            | 13         | 18          | 17           | 17        |
| Much less expensive in 10 years     | 6           | 7         | 8         | 5            | 7          | 3           | 3            | 4         |
| Don't know                          | 46          | 45        | 43        | 46           | 53         | 42          | 49           | 39        |

### **Trash-to-energy plants**

|                                     |             | Democrats |           |              |            | Republicans |              |           |
|-------------------------------------|-------------|-----------|-----------|--------------|------------|-------------|--------------|-----------|
|                                     | Full Sample | Total Dem | Lib Dem   | Mod/ Con Dem | Ind/ Other | Total Rep   | Mod/ Lib Rep | Con Rep   |
| Unweighted Base                     | 1,114       | 466       | 295       | 168          | 95         | 356         | 116          | 238       |
|                                     | %           | %         | %         | %            | %          | %           | %            | %         |
| <b>Much/somewhat more expensive</b> | <b>14</b>   | <b>11</b> | <b>10</b> | <b>13</b>    | <b>7</b>   | <b>19</b>   | <b>12</b>    | <b>23</b> |
| Much more expensive in 10 years     | 4           | 4         | 3         | 5            | 1          | 3           | 3            | 4         |
| Somewhat more expensive in 10 years | 10          | 8         | 7         | 9            | 6          | 16          | 10           | 19        |
| About the same in 10 years          | 15          | 14        | 14        | 13           | 13         | 19          | 15           | 20        |
| <b>Much/somewhat less expensive</b> | <b>26</b>   | <b>33</b> | <b>17</b> | <b>8</b>     | <b>26</b>  | <b>23</b>   | <b>26</b>    | <b>22</b> |
| Somewhat less expensive in 10 years | 18          | 22        | 2         | 2            | 17         | 18          | 20           | 17        |
| Much less expensive in 10 years     | 9           | 11        | 15        | 6            | 9          | 5           | 6            | 4         |
| Don't know                          | 42          | 41        | 37        | 46           | 53         | 38          | 46           | 35        |

**Over the next 10 years, do you think the cost of producing electricity from each of the following energy sources will be more expensive, less expensive, or about the same as today? (Cont'd.)**

### Wood-fueled power plants

|                                     |             | Democrats |           |              |            | Republicans |              |           |
|-------------------------------------|-------------|-----------|-----------|--------------|------------|-------------|--------------|-----------|
|                                     | Full Sample | Total Dem | Lib Dem   | Mod/ Con Dem | Ind/ Other | Total Rep   | Mod/ Lib Rep | Con Rep   |
| Unweighted Base                     | 1,114       | 466       | 295       | 168          | 95         | 356         | 116          | 238       |
|                                     | %           | %         | %         | %            | %          | %           | %            | %         |
| <b>Much/somewhat more expensive</b> | <b>31</b>   | <b>29</b> | <b>28</b> | <b>31</b>    | <b>27</b>  | <b>36</b>   | <b>31</b>    | <b>38</b> |
| Much more expensive in 10 years     | 12          | 12        | 12        | 12           | 8          | 12          | 12           | 11        |
| Somewhat more expensive in 10 years | 19          | 17        | 16        | 19           | 19         | 24          | 19           | 27        |
| About the same in 10 years          | 16          | 16        | 17        | 15           | 13         | 18          | 17           | 19        |
| <b>Much/somewhat less expensive</b> | <b>9</b>    | <b>11</b> | <b>7</b>  | <b>4</b>     | <b>6</b>   | <b>9</b>    | <b>11</b>    | <b>7</b>  |
| Somewhat less expensive in 10 years | 6           | 6         | 1         | 1            | 6          | 5           | 5            | 5         |
| Much less expensive in 10 years     | 4           | 5         | 7         | 3            | 0          | 4           | 5            | 3         |
| Don't know                          | 43          | 42        | 41        | 44           | 53         | 37          | 41           | 35        |

### Coal

|                                     |             | Democrats |           |              |            | Republicans |              |           |
|-------------------------------------|-------------|-----------|-----------|--------------|------------|-------------|--------------|-----------|
|                                     | Full Sample | Total Dem | Lib Dem   | Mod/ Con Dem | Ind/ Other | Total Rep   | Mod/ Lib Rep | Con Rep   |
| Unweighted Base                     | 1,114       | 466       | 295       | 168          | 95         | 356         | 116          | 238       |
|                                     | %           | %         | %         | %            | %          | %           | %            | %         |
| <b>Much/somewhat more expensive</b> | <b>38</b>   | <b>46</b> | <b>50</b> | <b>39</b>    | <b>32</b>  | <b>34</b>   | <b>28</b>    | <b>36</b> |
| Much more expensive in 10 years     | 16          | 20        | 23        | 15           | 13         | 11          | 11           | 10        |
| Somewhat more expensive in 10 years | 22          | 26        | 28        | 24           | 18         | 23          | 17           | 26        |
| About the same in 10 years          | 18          | 15        | 13        | 17           | 20         | 26          | 24           | 27        |
| <b>Much/somewhat less expensive</b> | <b>9</b>    | <b>9</b>  | <b>6</b>  | <b>4</b>     | <b>6</b>   | <b>11</b>   | <b>11</b>    | <b>11</b> |
| Somewhat less expensive in 10 years | 6           | 4         | 0         | 1            | 3          | 9           | 10           | 8         |
| Much less expensive in 10 years     | 3           | 5         | 5         | 3            | 3          | 2           | 1            | 2         |
| Don't know                          | 34          | 30        | 28        | 33           | 42         | 28          | 36           | 25        |

**Would you be more or less likely to purchase goods and/or services from a company that has committed to using 100% clean, renewable energy?**

|  |                    | Democrats        |                |                    |                  | Republicans      |                    |                |
|--|--------------------|------------------|----------------|--------------------|------------------|------------------|--------------------|----------------|
|  | <b>Full Sample</b> | <b>Total Dem</b> | <b>Lib Dem</b> | <b>Mod/Con Dem</b> | <b>Ind/Other</b> | <b>Total Rep</b> | <b>Mod/Lib Rep</b> | <b>Con Rep</b> |
| Unweighted Base                              | 1,114              | 466              | 295            | 168                | 95               | 356              | 116                | 238            |
|  | %                  | %                | %              | %                  | %                | %                | %                  | %              |
| <b>Much/Somewhat more likely to purchase</b> | <b>54</b>          | <b>72</b>        | <b>83</b>      | <b>56</b>          | <b>53</b>        | <b>37</b>        | <b>45</b>          | <b>33</b>      |
| Much more likely to purchase                 | 18                 | 27               | 32             | 20                 | 10               | 6                | 10                 | 4              |
| Somewhat more likely to purchase             | 37                 | 45               | 51             | 35                 | 43               | 31               | 35                 | 30             |
| Makes no difference either way               | 40                 | 25               | 14             | 41                 | 42               | 55               | 52                 | 57             |
| <b>Much/Somewhat less likely to purchase</b> | <b>5</b>           | <b>2</b>         | <b>2</b>       | <b>1</b>           | <b>5</b>         | <b>7</b>         | <b>3</b>           | <b>9</b>       |
| Somewhat less likely to purchase             | 3                  | --               | --             | 1                  | 0                | 5                | 1                  | 7              |
| Much less likely to purchase                 | 3                  | 1                | 2              | --                 | 1                | 2                | 1                  | 3              |

## Appendix II: Survey Method

The data in this report are based on a nationally representative survey of 1,114 American adults, aged 18 and older, 966 of whom are registered to vote. The survey was conducted November 28 – December 11, 2018. All questionnaires were self-administered by respondents in a web-based environment. The survey took, on average, about 27 minutes to complete.

The sample was drawn from GfK's KnowledgePanel®, an online panel of members drawn using probability sampling methods. Prospective panel members are recruited using a combination of random digit dial and address-based sampling techniques that cover virtually all (non-institutional) resident phone numbers and addresses in the United States. Those contacted who would choose to join the panel but do not have access to the Internet are loaned computers and given Internet access so they may participate.

The sample therefore includes a representative cross-section of American adults – irrespective of whether they have Internet access, use only a cell phone, etc. Key demographic variables were weighted, post survey, to match US Census Bureau norms.

The survey instrument was designed by Anthony Leiserowitz, Seth Rosenthal, Matthew Ballew, Matthew Goldberg, and Abel Gustafson of Yale University, and Edward Maibach and John Kotcher of George Mason University.

### Margins of error

All samples are subject to some degree of sampling error – that is, statistical results obtained from a sample can be expected to differ somewhat from results that would be obtained if every member of the target population was interviewed. Average margins of error, at the 95% confidence level, are as follows:

- Total registered voters: Plus or minus 3 percentage points.
- Democrats (total): Plus or minus 5 points.
- Liberal Democrats: Plus or minus 6 points.
- Moderate/conservative Democrats: Plus or minus 8 points.
- Independents: Plus or minus 10 points.
- Republicans (total): Plus or minus 5 points.
- Liberal/moderate Republicans: Plus or minus 9 points.
- Conservative Republicans: Plus or minus 6 points.

## Appendix III: Demographics

### Registered Voters

|  | <i>N</i><br>(unweighted) | %<br>(weighted) |
|--|--------------------------|-----------------|
| <b>Total</b>                                   | <b>966</b>               | <b>100</b>      |
| Men  | 460                      | 48              |
| Women  | 506                      | 52              |
| iGen (18-21)                                   | 13                       | 4               |
| Millennial (22-37)                             | 190                      | 26              |
| Generation X (38-53)                           | 236                      | 24              |
| Baby Boomer (54-72)                            | 413                      | 38              |
| Silent Generation (73+)                        | 114                      | 9               |
| Less than high school                          | 22                       | 6               |
| High school graduate                           | 148                      | 26              |
| Some college/Associate degree/Technical degree | 320                      | 32              |
| College graduate                               | 272                      | 20              |
| Post graduate                                  | 204                      | 16              |
| <\$25K   | 104                      | 11              |
| \$25K - <\$50K                                 | 172                      | 19              |
| \$50K - <\$75K                                 | 156                      | 16              |
| \$75K - <\$100K                                | 172                      | 15              |
| \$100K - <\$125K                               | 124                      | 14              |
| \$125K+  | 238                      | 26              |
| White, non-Hispanic                            | 727                      | 68              |
| Black, African-American non-Hispanic           | 86                       | 12              |
| Hispanic                                       | 93                       | 13              |
| Other non-Hispanic                             | 60                       | 7               |
| Northeast                                      | 179                      | 18              |
| Midwest  | 221                      | 22              |
| South  | 321                      | 34              |
| West   | 245                      | 25              |

**Full Sample**

|  | <i>N</i><br>(unweighted) | %<br>(weighted) |
|--|--------------------------|-----------------|
| <b>Total</b>                                   | <b>1,114</b>             | <b>100</b>      |
| Men  | 530                      | 48              |
| Women  | 584                      | 52              |
| iGen (18-21)                                   | 24                       | 6               |
| Millennial (22-37)                             | 247                      | 29              |
| Generation X (38-53)                           | 274                      | 24              |
| Baby Boomer (54-72)                            | 449                      | 34              |
| Silent Generation (73+)                        | 120                      | 8               |
| Less than high school                          | 45                       | 10              |
| High school graduate                           | 197                      | 29              |
| Some college/Associate degree/Technical degree | 354                      | 29              |
| College graduate                               | 292                      | 18              |
| Post graduate                                  | 226                      | 15              |
| <\$25K   | 136                      | 14              |
| \$25K - <\$50K                                 | 206                      | 19              |
| \$50K - <\$75K                                 | 185                      | 17              |
| \$75K - <\$100K                                | 191                      | 14              |
| \$100K - <\$125K                               | 131                      | 12              |
| \$125K+  | 265                      | 24              |
| White, non-Hispanic                            | 811                      | 64              |
| Black, African-American non-Hispanic           | 104                      | 12              |
| Hispanic                                       | 120                      | 16              |
| Other non-Hispanic                             | 79                       | 8               |
| Northeast                                      | 203                      | 18              |
| Midwest  | 247                      | 21              |
| South  | 386                      | 37              |
| West   | 278                      | 24              |



