



CLIMATE CHANGE IN THE AMERICAN MIND

December 2020



YALE PROGRAM ON
Climate Change
Communication



GEORGE MASON UNIVERSITY
CENTER for CLIMATE CHANGE
COMMUNICATION

Table of Contents

| | |
|---|-----------|
| Introduction | 3 |
| 1 Executive Summary | 4 |
| 2 Global Warming Beliefs | 5 |
| 3 Emotional Responses to Global Warming | 10 |
| 4 Perceived Risks of Global Warming | 12 |
| 5 Personal and Social Engagement with Global Warming | 15 |
| 6 Efficacy Beliefs | 20 |
| 7 How Americans Conceptualize Global Warming | 21 |
| 8 Global Warming and Severe Weather | 22 |
| 9 Appendix I: Data Tables | 28 |
| 10 Appendix II: Survey Method | 86 |
| 11 Appendix III: Sample Demographics | 88 |

Introduction

This report is based on findings from a nationally representative survey – *Climate Change in the American Mind* – conducted by the Yale Program on Climate Change Communication (climatecommunication.yale.edu) and the George Mason University Center for Climate Change Communication (climatechangecommunication.org). Interview dates: December 3 – 16, 2020. Interviews: 1,036 adults in the U.S. (18+). Average margin of error +/- 3 percentage points at the 95% confidence level. The research was funded by the 11th Hour Project, the Energy Foundation, the MacArthur Foundation, and the Grantham Foundation.

Principal Investigators:

Anthony Leiserowitz, PhD
Yale Program on Climate Change Communication
anthony.leiserowitz@yale.edu

Edward Maibach, MPH, PhD
George Mason University Center for Climate Change Communication
emaibach@gmu.edu

Seth Rosenthal, PhD
Yale Program on Climate Change Communication
seth.rosenthal@yale.edu

John Kotcher, PhD
George Mason University Center for Climate Change Communication
jkotcher@gmu.edu

Cite as:

Leiserowitz, A., Maibach, E., Rosenthal, S., Kotcher, J., Wang, X., Goldberg, M., Lacroix, K., & Marlon, J. (2021). *Climate Change in the American Mind: December 2020*. Yale University and George Mason University. New Haven, CT: Yale Program on Climate Change Communication.

1 Executive Summary

This survey was fielded from December 3 – 16, 2020, after the results of the 2020 U.S. presidential election were known, but before control of the U.S. Senate was determined.

- Americans who think global warming is happening outnumber those who think it is not happening by a ratio of more than 5 to 1 (72% versus 13%). Those who are “very” or “extremely” sure global warming is happening outnumber those who are “very” or “extremely” sure it is not by more than 8 to 1 (50% versus 6%).
- More than half of Americans (58%) understand that global warming is mostly human-caused. About three in ten (29%) think global warming is due mostly to natural changes in the environment.
- More than half of Americans (58%) understand that most scientists think global warming is happening. However, only one in five (20%) understand how strong the level of consensus among scientists is (i.e., that more than 90% of climate scientists think human-caused global warming is happening).
- Two in three Americans (66%) say they are at least “somewhat worried” about global warming. One in four (27%) are “very worried.”
- About four in ten Americans say they feel at least moderately “hopeful” (43%), “disgusted” (42%), or “helpless” (41%) about global warming.
- More than four in ten Americans think people in the United States are being harmed by global warming “right now” (47%) and about four in ten say they have personally experienced the effects of global warming (42%).
- More than four in ten Americans (43%) think they will be harmed by global warming, and nearly half think their family (49%) will be harmed. Half or more Americans think global warming will harm people in their community (52%), people in the U.S. (62%), the world’s poor (66%), people in developing countries (67%), future generations of people (72%), and plant and animal species (73%).
- About six in ten Americans (62%) say they “rarely” or “never” discuss global warming with family and friends, while 38% say they do so “occasionally” or “often.”
- About half of Americans (51%) say they hear about global warming in the media at least once a month. Fewer (21%) say they hear people they know talk about global warming at least once a month.
- Two in three Americans (66%) say the issue of global warming is either “extremely,” “very,” or “somewhat” important to them personally, while about one in three (34%) say it is either “not too” or “not at all” personally important.
- Fewer than half of Americans think their friends and family expect them to take action on global warming. Forty-five percent think it is at least “moderately” important to their family and friends that they take action (an injunctive norm), and 36% say their family and friends make at least “a moderate amount of effort” to reduce global warming (a descriptive norm).
- About two in three Americans (65%) feel a personal sense of responsibility to help reduce global warming.
- Few Americans (14%) agree with the statement that it is too late to do anything about global warming, while about two in three (68%) disagree that it is too late.
- Majorities of Americans think global warming is an environmental issue (80%) or a scientific issue (73%). More than half think global warming is an agricultural (68%), severe weather (66%), economic (66%), health (62%), political (61%), or humanitarian (58%) issue.
- About two in three Americans either “strongly” (33%) or “somewhat” (32%) agree that wildfires have increased around the world as a result of global warming.
- A majority of Americans are worried about harm from environmental hazards in their local area including water and air pollution (both 73%), extreme heat (65%), droughts (64%), agricultural pests and diseases (64%), water shortages (54%), tornados (53%), and flooding (52%).
- About two in three Americans (63%) think global warming is affecting weather in the United States; one in three think it is being affected “a lot” (35%).

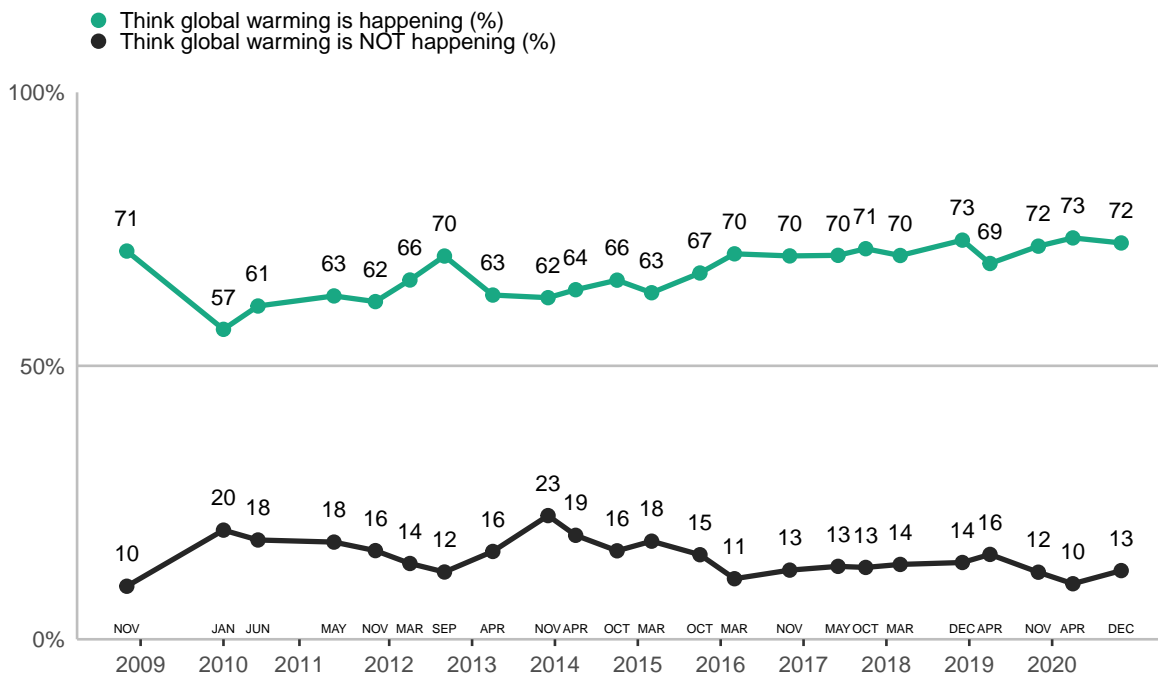
2 Global Warming Beliefs

2.1 About seven in ten Americans think global warming is happening.

Americans who think global warming is happening outnumber those who think it is not happening by a ratio of more than 5 to 1.

About seven in ten Americans (72%) think global warming is happening. By contrast, 13% of Americans think global warming is not happening. Over the last five years (since our October 2015 survey), the percentage of Americans who think global warming is happening has increased by five percentage points.

About seven in ten Americans think global warming is happening



Do you think global warming is happening?
 December 2020



YALE PROGRAM ON
 Climate Change
 Communication



GEORGE MASON UNIVERSITY
 CENTER for CLIMATE CHANGE
 COMMUNICATION



YALE PROGRAM ON
 Climate Change
 Communication



GEORGE MASON UNIVERSITY
 CENTER for CLIMATE CHANGE
 COMMUNICATION

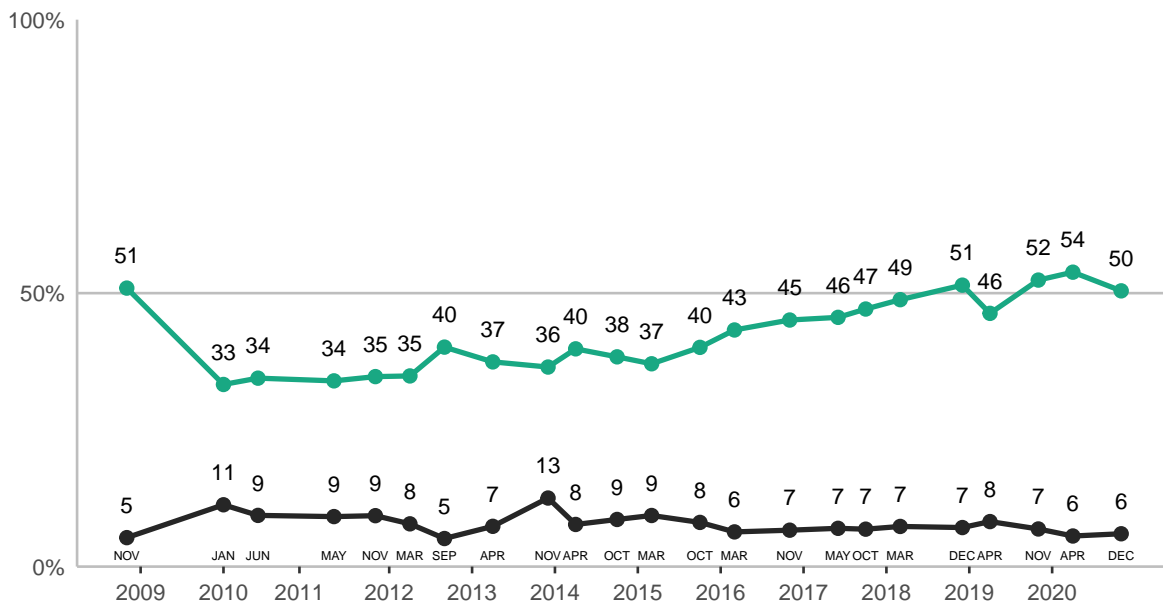
2.2 Half of Americans are “extremely” or “very” sure global warming is happening. Fewer than one in ten are as sure it isn’t happening.

Half of Americans (50%) are either “extremely” or “very” sure global warming is happening. Far fewer (6%) are “extremely” or “very” sure global warming is not happening.

Over the last five years (since our October 2015 survey), the percentage of Americans who are “extremely” or “very” sure global warming is happening has increased by 10 percentage points.

Half of Americans are "extremely" or "very" sure global warming is happening

- Extremely/Very sure global warming is happening (%)
- Extremely/Very sure global warming is NOT happening (%)



How sure are you that global warming is/is not happening?
December 2020

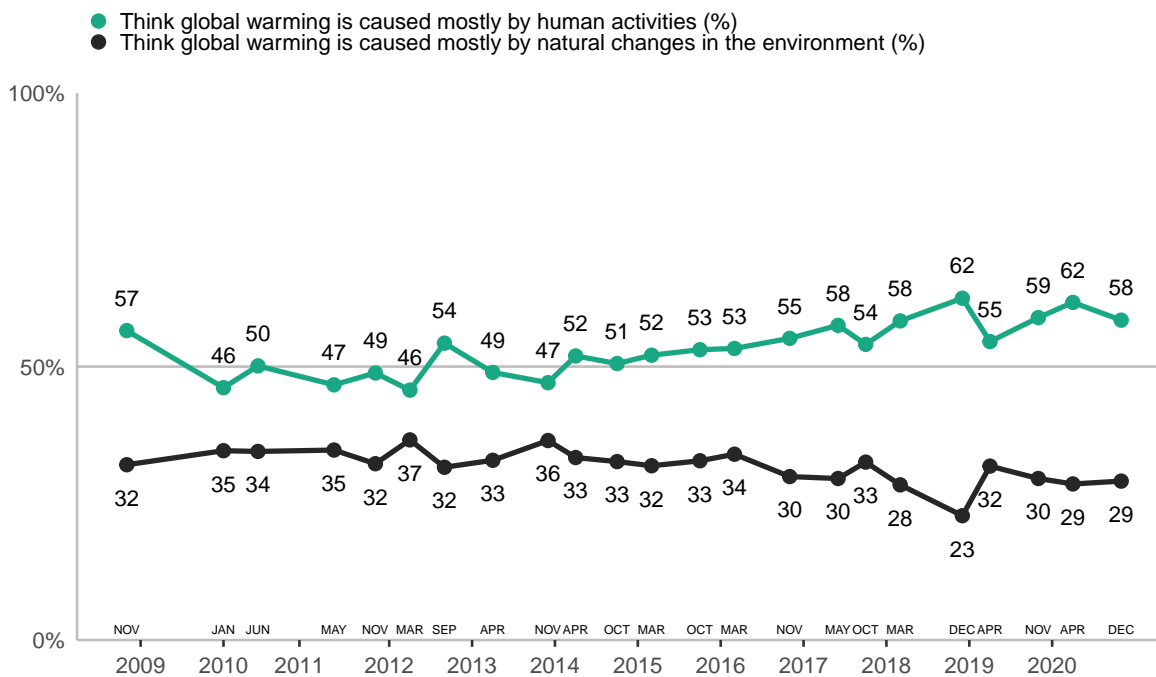


2.3 About six in ten Americans think global warming is mostly human-caused.

The 2018 U.S. National Climate Assessment (written and reviewed by hundreds of climate experts over the course of four years) states: “Greenhouse gas emissions from human activities are the only factors that can account for the observed warming over the last century; there are no credible alternative human or natural explanations supported by the observational evidence” (pp. 39-40).¹

A majority of Americans (58%) understand that global warming is mostly human-caused, an increase of five percentage points over the past five years (since October 2015). By contrast, three in ten (29%) think it is due mostly to natural changes in the environment.

About six in ten Americans think global warming is mostly human-caused



Assuming global warming is happening, do you think it is...
December 2020



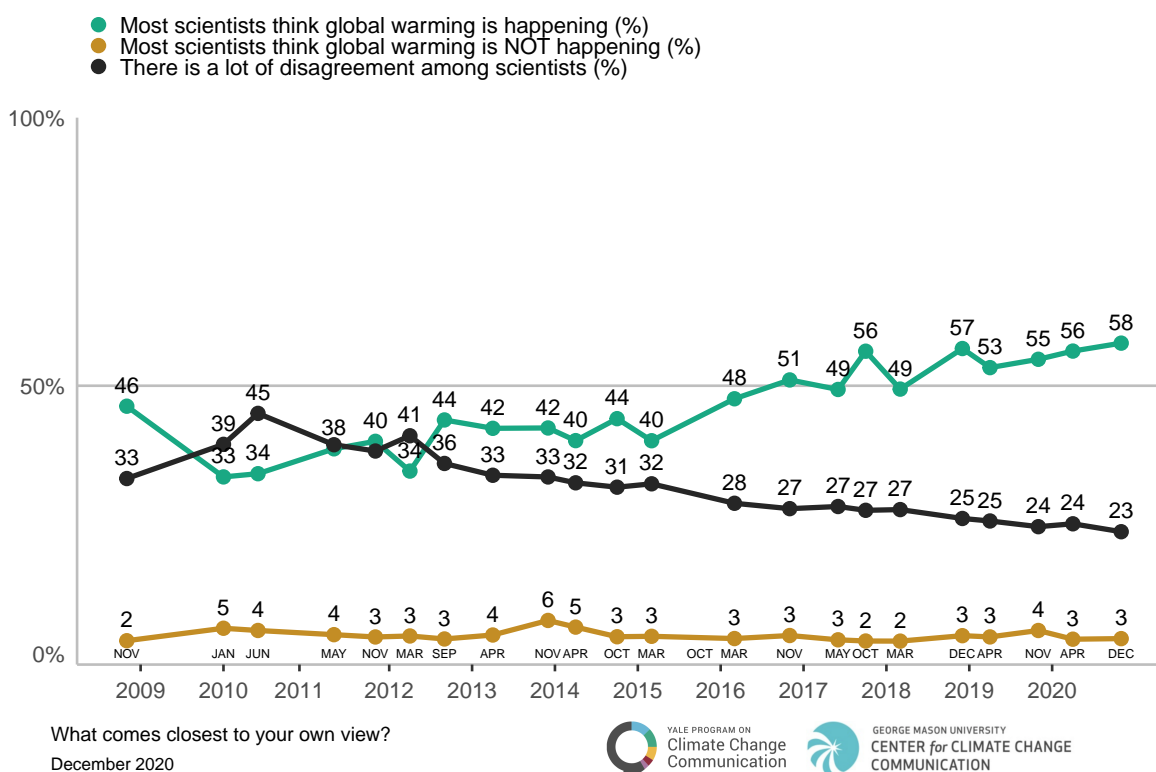
¹<http://nca2018.globalchange.gov>

2.4 More than half of Americans understand that most scientists think global warming is happening.

A review by John Cook and colleagues² found that six independent, peer-reviewed studies examining the extent of the scientific consensus about global warming have concluded that between 90% and 100% of climate scientists are convinced that human-caused global warming is happening. The most rigorous of these studies found that 97% of climate scientists are convinced that global warming is happening and human-caused.

A majority of Americans (58%) understand that most scientists think global warming is happening. By contrast, about one in four Americans (23%) think there is a lot of disagreement among scientists about whether or not global warming is happening, the lowest level since our surveys began. Very few Americans (3%) believe that most scientists think global warming is not happening.

More than half of Americans understand that most scientists think global warming is happening



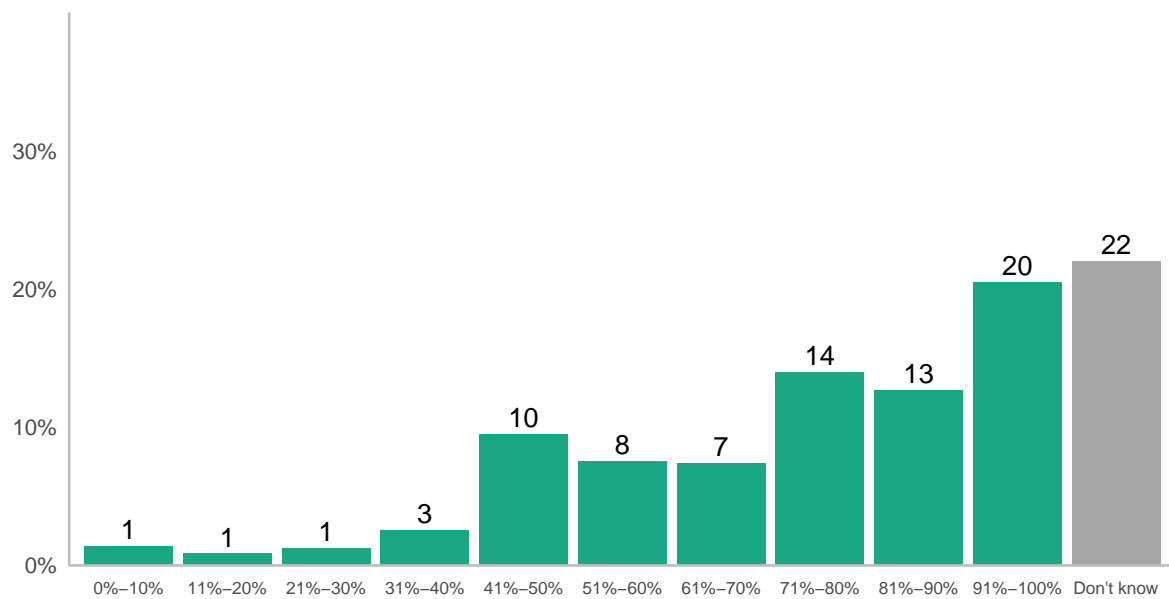
²Cook, J., Oreskes, N., Doran, P. T., Anderegg, W. R. I., Verheggen, B., Maibach, E. W., Carlton, J. S., Lewandowsky, S., Skuce, A. G., Green, S. A., Nuccitelli, D., Jacobs, P., Richardson, M., Winkler, B., Painting, R., & Rice, K. (2016). Consensus on consensus: A synthesis of consensus estimates on human-caused global warming. *Environmental Research Letters* 11(4). doi:10.1088/1748-9326/11/4/048002

2.5 One in five Americans understand that almost all climate scientists (more than 90%) have concluded that human-caused global warming is happening.

Although the majority of Americans now understand that most scientists think global warming is happening, fewer understand just how strong the level of consensus among scientists is. Only one in five Americans (20%) understand that nearly all climate scientists (more than 90%) are convinced that human-caused global warming is happening. However, that number has increased by 12 percentage points over the last five years (since October 2015; see Data Tables).

About one in five Americans (22%) say they “don’t know” what percentage of climate scientists think human-caused global warming is happening.³

About one in five Americans understand that almost all climate scientists (more than 90%) have concluded that human-caused global warming is happening



To the best of your knowledge, what percentage of climate scientists think that human-caused global warming is happening? Please click on the slider bar below to indicate your answer. You can slide the indicator to the position that best describes your opinion.

December 2020



Public misunderstanding of the scientific consensus – which has been found in each of our surveys since 2008 – has significant consequences. Other research has identified public understanding of the scientific consensus as an important “gateway belief” that influences other important beliefs (i.e., that global warming is happening, human-caused, and worrisome) and support for action.⁴

³ Respondents were asked to estimate the percentage of climate scientists who have concluded that human-caused global warming is happening by moving a slider bar which appeared on the screen of their computer. This slider allowed respondents to move the marker from 0% on the left to 100% on the right, or to any whole number between the two. A “don’t know” response option appeared below the slider bar.

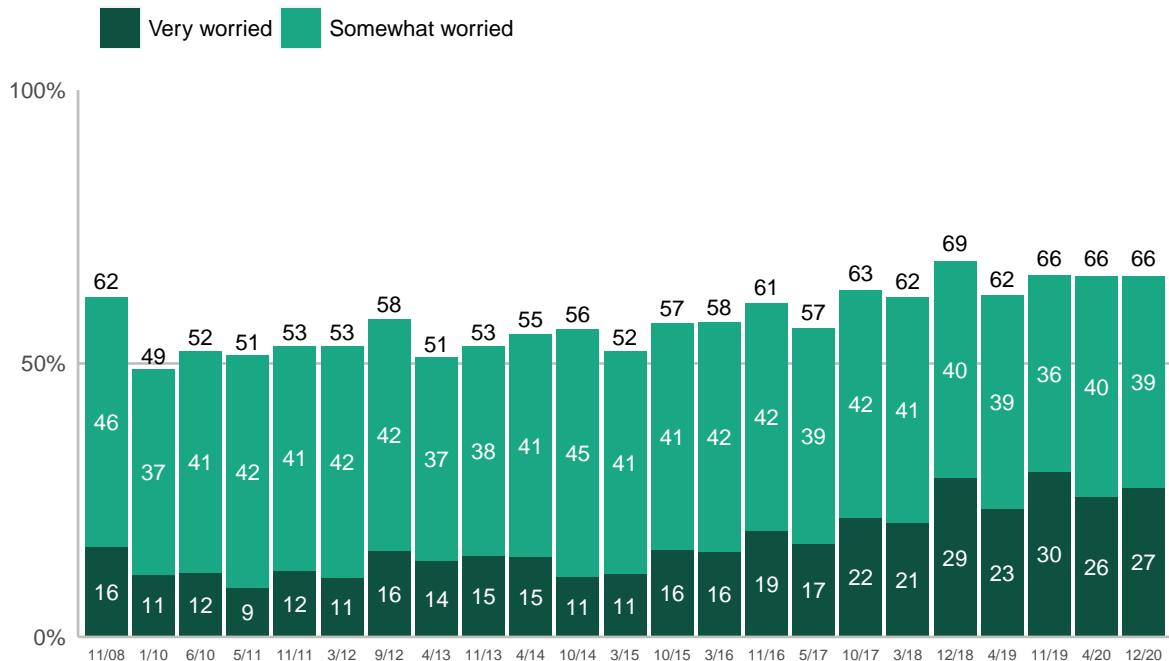
⁴ For more information, see: van der Linden, S. L., Leiserowitz, A. A., Feinberg, G. D., & Maibach, E. W. (2015). The scientific consensus on climate change as a gateway belief: Experimental evidence. *PLoS ONE*, 10(2). <https://journals.plos.org/plosone/article?id=10.1371/journal.pone.0118489>

3 Emotional Responses to Global Warming

3.1 Two in three Americans are at least “somewhat worried” about global warming.

Two in three Americans (66%) say they are at least “somewhat worried” about global warming, an increase of nine percentage points over the past five years (since October 2015). About one in four Americans (27%) are “very worried,” an increase of 11 percentage points over the past five years.

Two in three Americans are at least "somewhat worried" about global warming



How worried are you about global warming?
December 2020

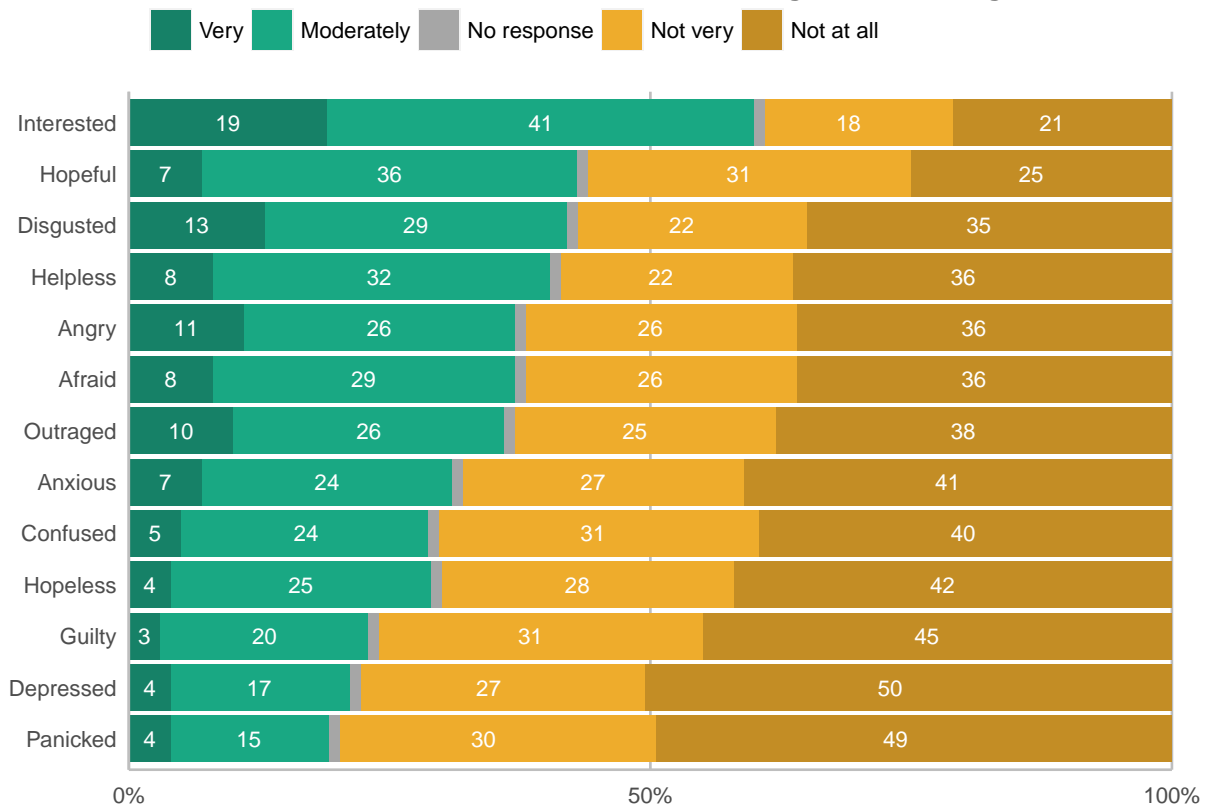


3.2 About six in ten Americans are “interested” in global warming.

When asked how strongly they feel various emotions when thinking about global warming, about six in ten Americans say they feel “very” or “moderately” “interested” in it (61%). Four in ten or more say they feel “hopeful” (43%), “disgusted” (42%), or “helpless” (41%).

Fewer Americans feel “afraid” (37%), “angry” (37%), “outraged” (36%), “anxious” (31%), “hopeless” (29%), “confused” (29%), “guilty” (23%), “depressed” (22%), or “panicked” (19%).

About six in ten Americans are “interested” in global warming



How strongly do you feel each of the following emotions when you think about the issue of global warming?

December 2020

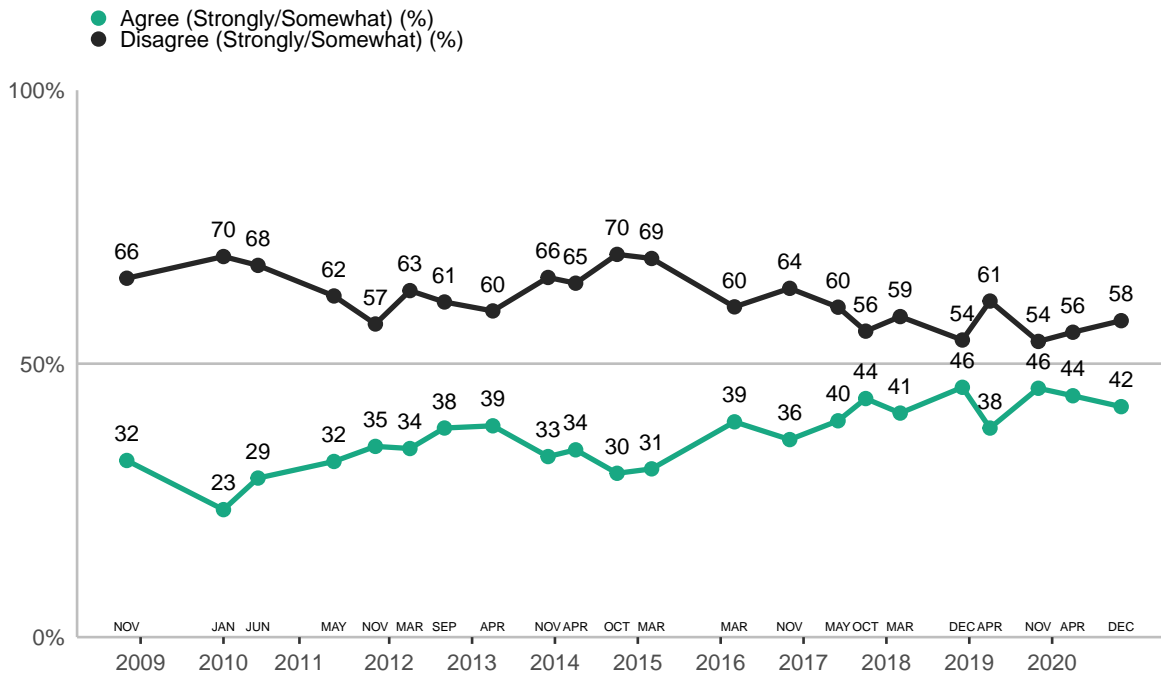


4 Perceived Risks of Global Warming

4.1 About four in ten Americans say they have personally experienced the effects of global warming.

About four in ten Americans (42%) say they have personally experienced the effects of global warming, while more than half (58%) say they have not.

About four in ten Americans say they have personally experienced the effects of global warming



How much do you agree or disagree with the following statement? I have personally experienced the effects of global warming.

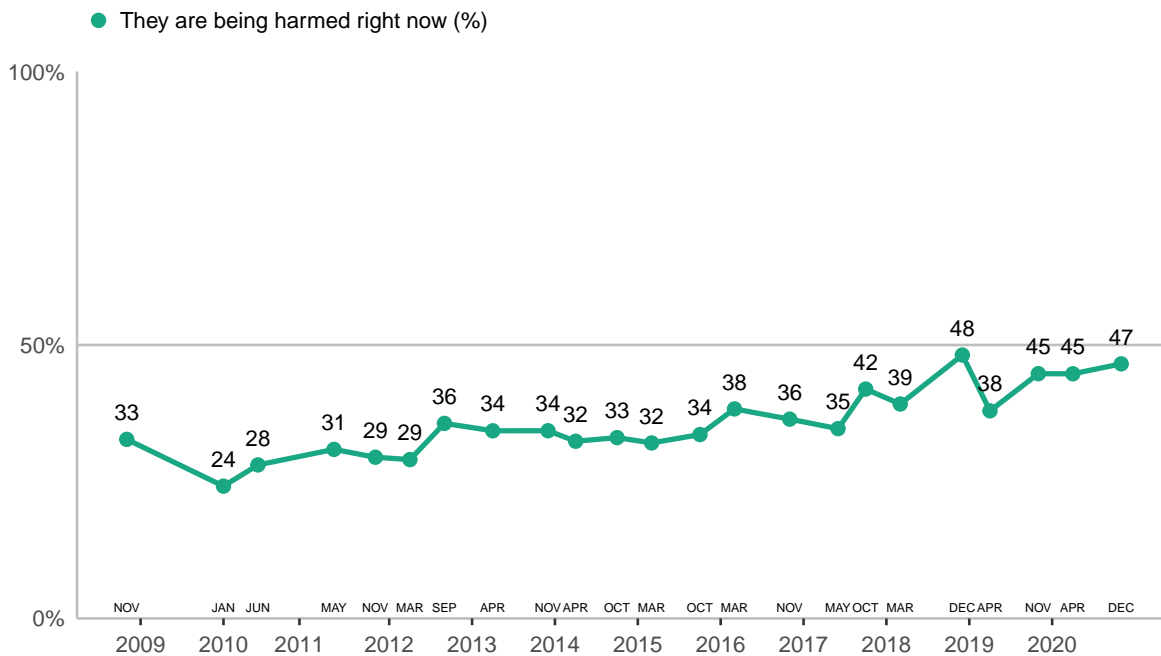
December 2020



4.2 More than four in ten Americans think people in the U.S. are being harmed “right now” by global warming.

More than four in ten Americans (47%) think people in the U.S. are being harmed by global warming “right now,” an increase of 13 percentage points over the last five years (since October 2015).

More than four in ten Americans think people in the U.S. are being harmed "right now" by global warming



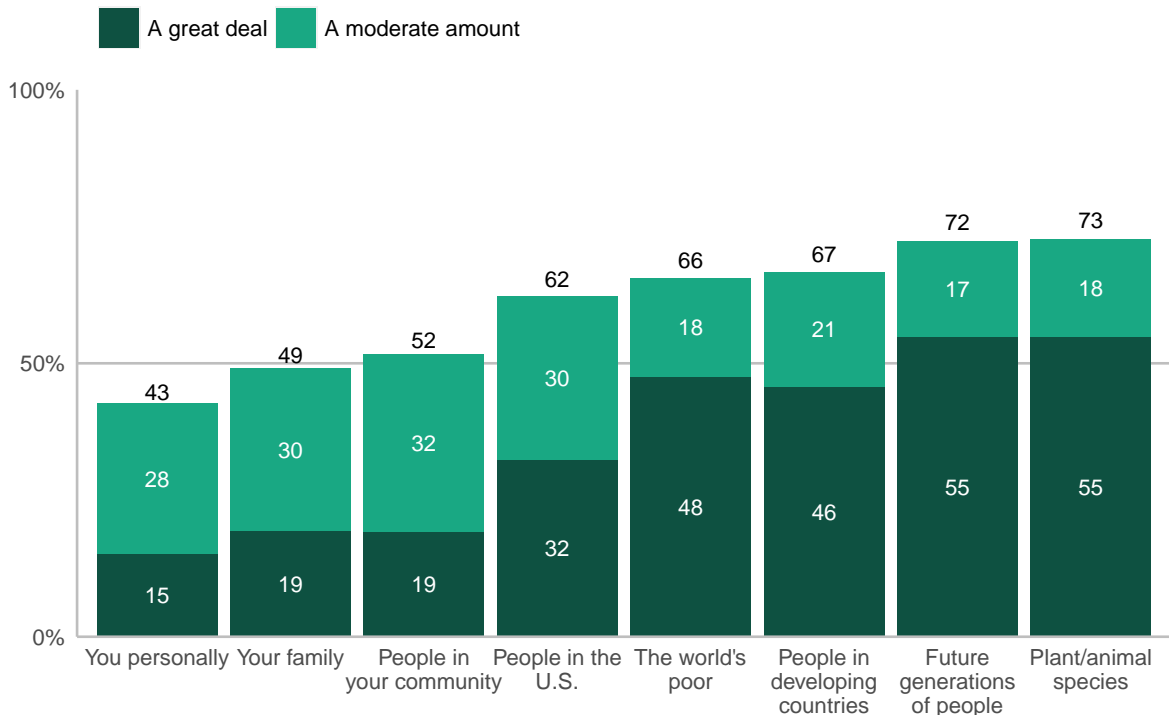
When do you think global warming will start to harm people in the United States?
December 2020



4.3 Many Americans think they will be harmed by global warming, but think others will be harmed more.

Many Americans understand that global warming will cause harm. Americans are most likely to think that plant and animal species (73%) and future generations of people (72%) will be harmed “a great deal” or “a moderate amount” by global warming. Six in ten or more think people in developing countries (67%), the world’s poor (66%), and people in the U.S. (62%) will be harmed, and about half think people in their community (52%) will be harmed. Four in ten or more think their family (49%), and they themselves (43%) will be harmed.

Many Americans think they will be harmed by global warming – But think others will be harmed more –



How much do you think global warming will harm...?
December 2020

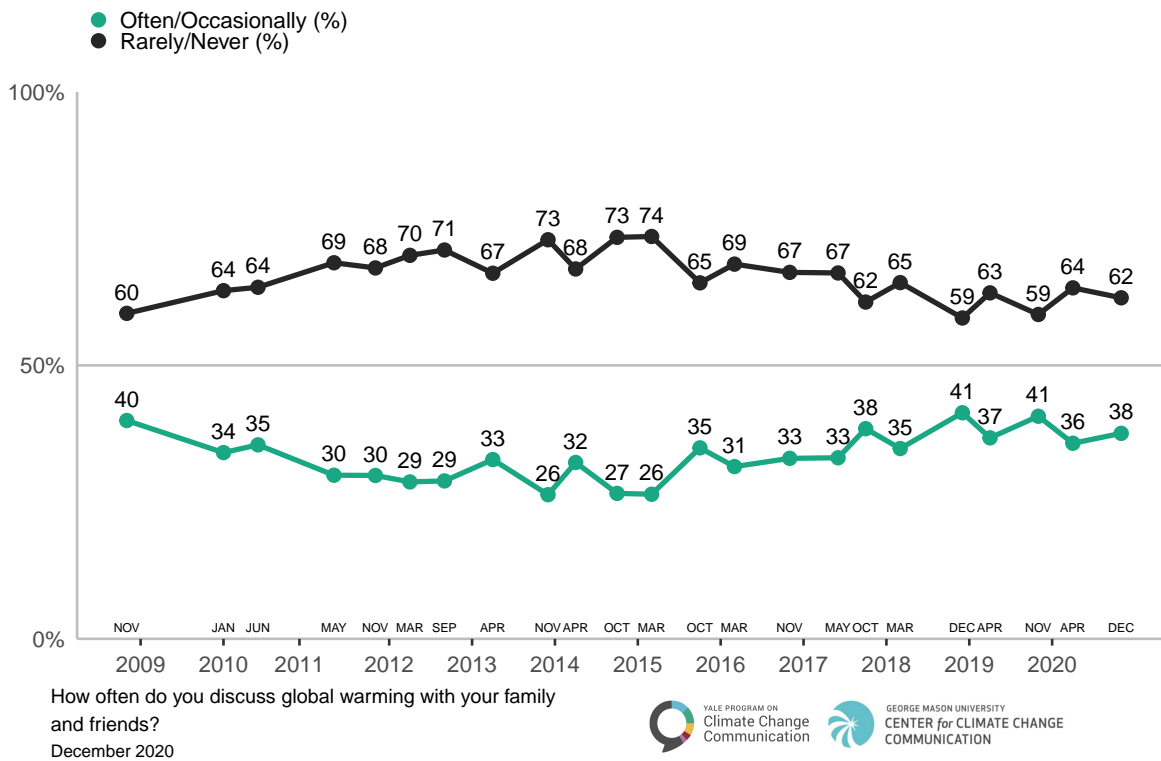


5 Personal and Social Engagement with Global Warming

5.1 Most Americans “rarely” or “never” discuss global warming with family and friends.

About six in ten Americans (62%) say they “rarely” or “never” discuss global warming with family and friends. Only about four in ten (38%) say they discuss global warming “occasionally” or “often.”

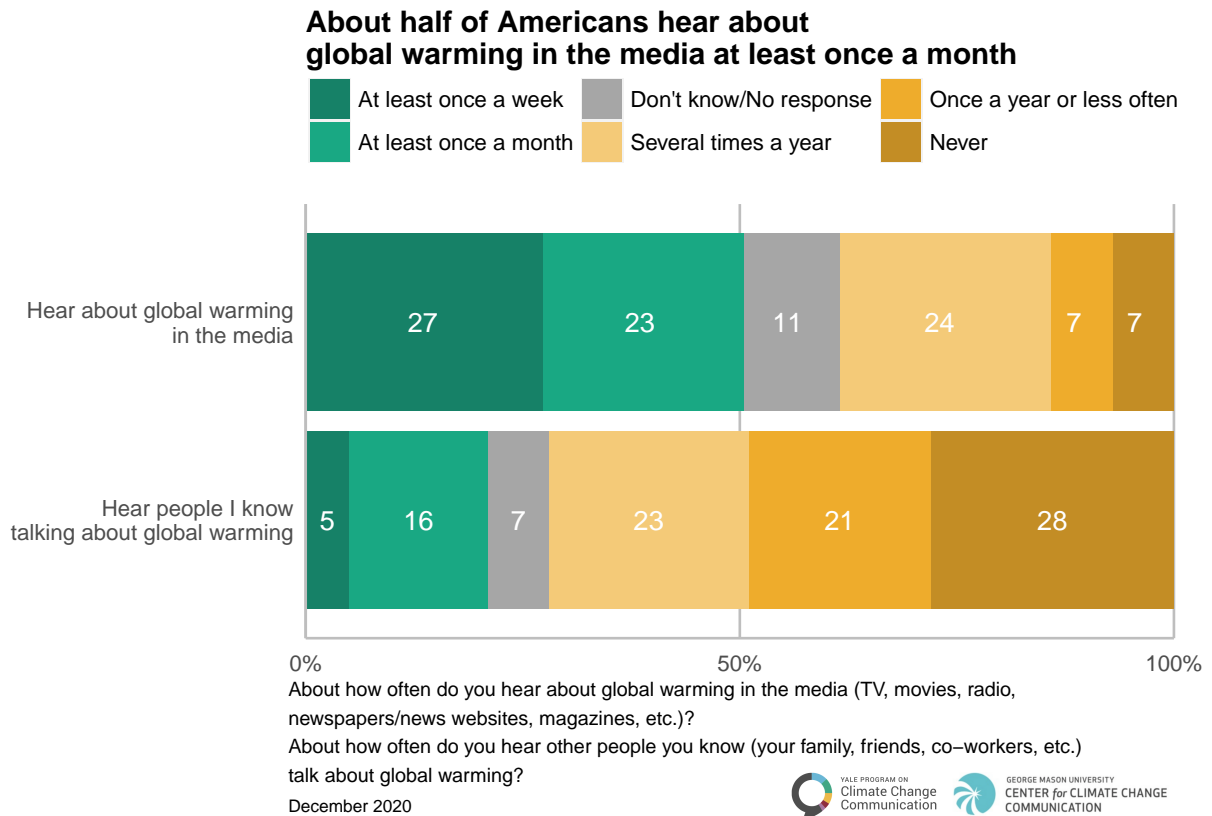
Most Americans "rarely" or "never" discuss global warming with family and friends



5.2 About half of Americans hear about global warming in the media at least once a month; fewer hear people they know talking about it at least once a month.

About half of Americans (51%) say they hear about global warming in the media once a month or more frequently, while 39% say they hear about global warming in the media several times a year or less often, including seven percent who say they never hear about global warming in the media.

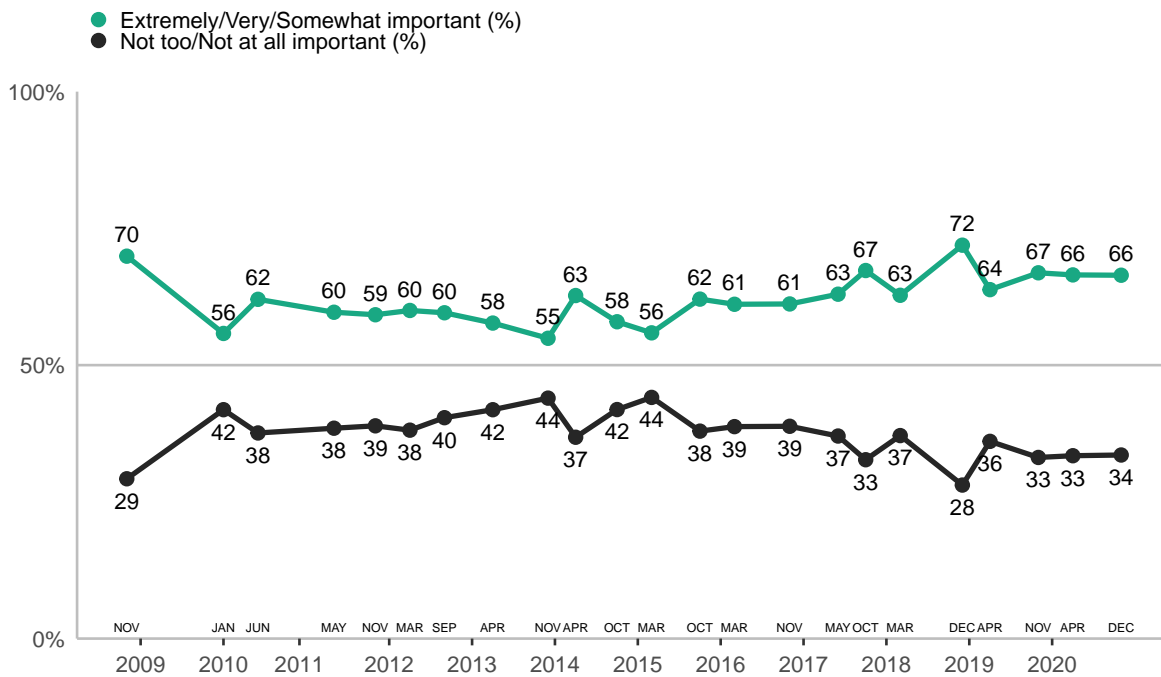
Only about one in five Americans (21%) say they hear people they know talk about global warming once a month or more frequently. In contrast, about seven in ten (72%) say they hear people they know talk about it several times a year or less often, including 28% who say they never hear people they know talk about global warming.



5.3 Two in three Americans say the issue of global warming is personally important.

Two in three Americans (66%) say the issue of global warming is either “extremely” (13%), “very” (24%), or “somewhat” (30%) important to them personally. One in three (34%) say global warming is either “not too” (17%) or “not at all” (16%) personally important.

Two in three Americans say the issue of global warming is personally important



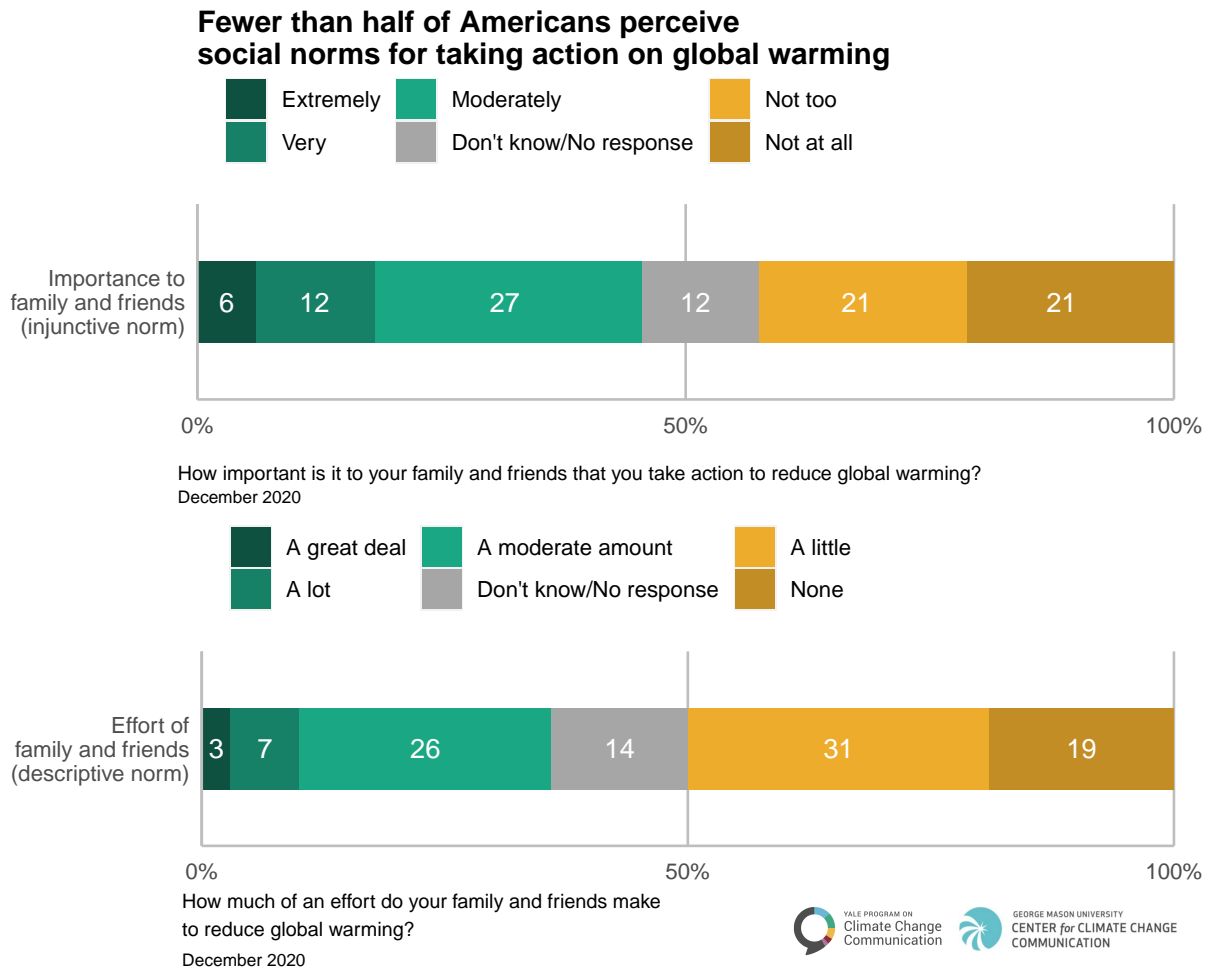
How important is the issue of global warming to you personally?
December 2020



5.4 Fewer than half of Americans perceive social norms for taking action on global warming.

Social science research has shown that two types of social norms can have a powerful influence on people's behavior: injunctive norms – the belief that friends and family expect you to behave in a given way; and descriptive norms – the belief that friends and family are themselves behaving in that way.⁵

Forty-five percent of Americans perceive an injunctive norm, saying it is either “extremely” (6%), “very” (12%), or “moderately” important (27%) to their family and friends that they take action to reduce global warming. Fewer Americans (36%) perceive a descriptive norm, saying their family and friends make either “a great deal of effort” (3%), “a lot of effort” (7%), or “a moderate amount of effort” (26%) to reduce global warming.

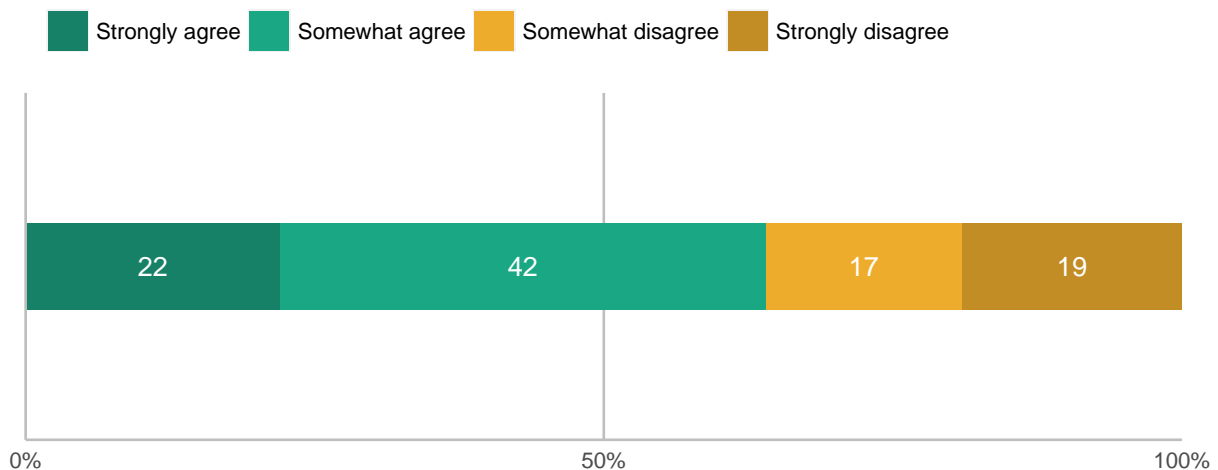


⁵Schultz, P. W., Nolan, J. M., Cialdini, R. B., Goldstein, N. J., & Griskevicius, V. (2007). The constructive, destructive, and reconstructive power of social norms. *Psychological Science*, 18(5), 429-434. <https://journals.sagepub.com/doi/10.1111/j.1467-9280.2007.01917.x>

5.5 About two in three Americans feel a personal sense of responsibility to help reduce global warming.

About two in three Americans (65%) agree either “strongly” (22%) or “somewhat” (42%) that they feel a personal sense of responsibility to help reduce global warming.

About two in three Americans feel a personal sense of responsibility to help reduce global warming



How much do you agree or disagree with the following statement?
I feel a personal sense of responsibility to help reduce global warming.

December 2020

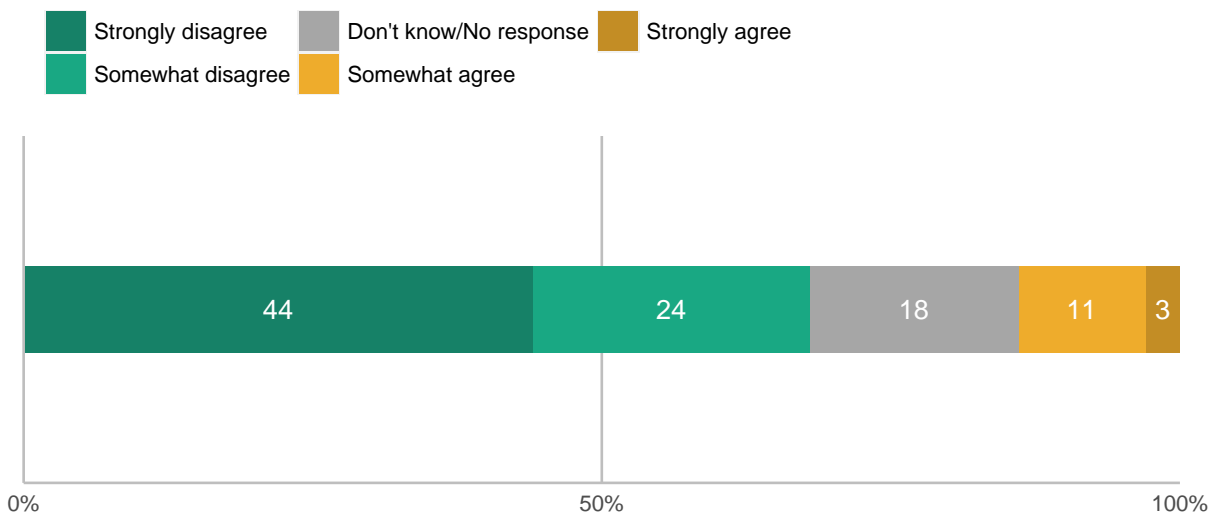


6 Efficacy Beliefs

6.1 Few Americans think it is too late to do anything about global warming.

Only 14% of Americans agree either “strongly” (3%) or “somewhat” (11%) that it is too late to do anything about global warming. In contrast, about two in three Americans (68%) are more optimistic – they either “strongly” (44%) or “somewhat” (24%) disagree that it is too late to do anything about global warming.

Few Americans think it is too late to do anything about global warming



Please indicate how strongly you agree or disagree with the following statement:
It's already too late to do anything about global warming.

December 2020



7 How Americans Conceptualize Global Warming

7.1 Americans are most likely to think of global warming as an environmental and/or scientific issue.

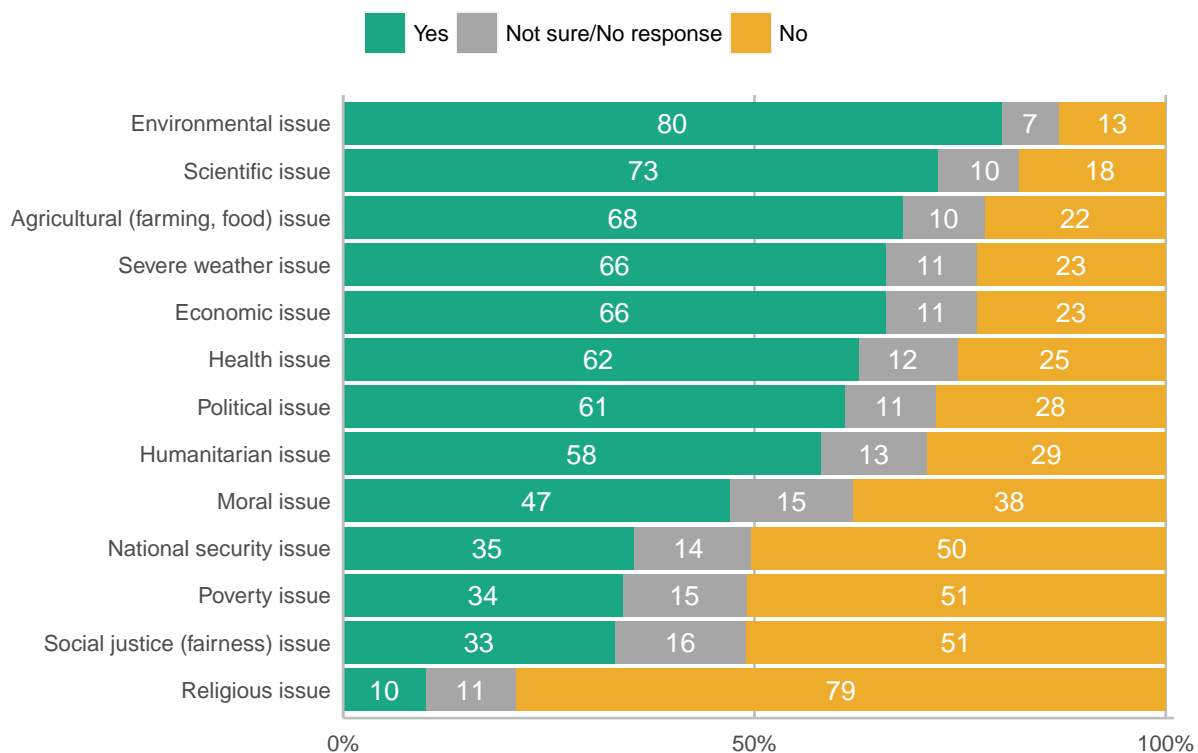
Global warming is a complex challenge with many dimensions. Understanding how people conceptualize the issue is critical to formulating effective communication strategies.

A large majority of Americans think global warming is an environmental issue (80%) and a scientific issue (73%). More than half think global warming is an agricultural (68%), severe weather (66%), economic (66%), health (62%), political (61%), or humanitarian (58%) issue.

Fewer think global warming is a moral (47%), national security (35%), poverty (34%), social justice (33%), and/or religious (10%) issue.

Over the past five years (since October 2015), the proportion of Americans who consider global warming a national security issue has increased by 12 percentage points (see Data Tables). Among the other items that were asked in both the current survey and in October 2015, the proportion of Americans who view global warming as a poverty issue (+9 percentage points), moral issue (+6 points), or social justice (fairness) issue (+6 points) issue has also increased.

Americans are most likely to think of global warming as an environmental and/or scientific issue



In your opinion, do you think global warming is a(n)...
December 2020

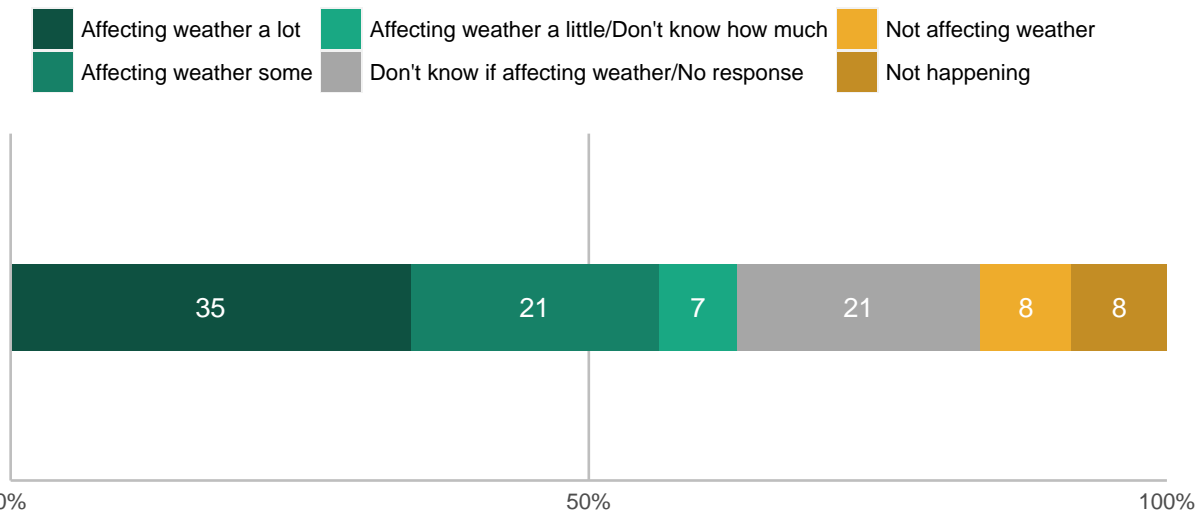


8 Global Warming and Severe Weather

8.1 About six in ten Americans think global warming is affecting weather in the United States.

About six in ten Americans (63%) think global warming is affecting weather in the United States, including more than half (56%) who think global warming is affecting U.S. weather either “a lot” (35%) or “some” (21%).

About six in ten Americans think global warming is affecting weather in the United States



Which statement best reflects your view?

- (a) Global warming is affecting weather in the U.S.;
- (b) Global warming is not affecting weather in the U.S.;
- (c) Global warming isn't happening;
- (d) Don't know;
- (e) Prefer not to answer

[If (a) selected]: How much do you think global warming is affecting weather in the U.S.?

December 2020



YALE PROGRAM ON
Climate Change
Communication



GEORGE MASON UNIVERSITY
CENTER for CLIMATE CHANGE
COMMUNICATION



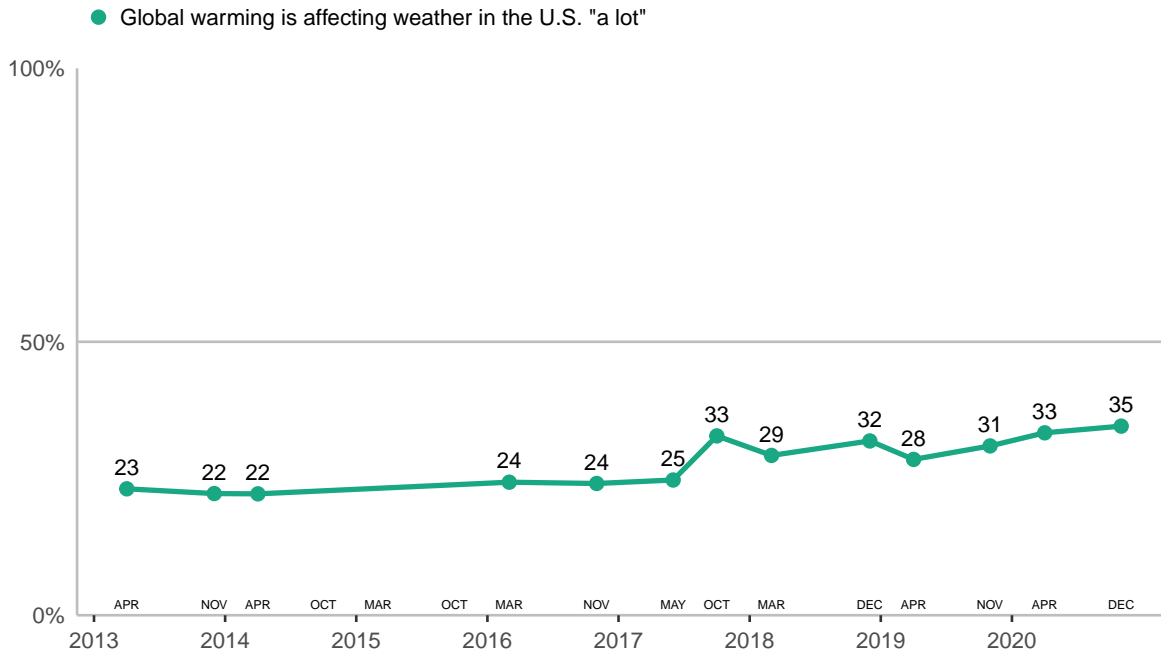
YALE PROGRAM ON
Climate Change
Communication



GEORGE MASON UNIVERSITY
CENTER for CLIMATE CHANGE
COMMUNICATION

As noted above, 35% of Americans think global warming is affecting weather “a lot.” The percentage of Americans who think global warming is affecting the weather “a lot” has increased by 12 percentage points since we first asked this question in April 2013.

One in three Americans think global warming is affecting weather "a lot"



Which statement best reflects your view?

- (a) Global warming is affecting weather in the U.S.;
- (b) Global warming is not affecting weather in the U.S.;
- (c) Global warming isn't happening;
- (d) Don't know;
- (e) Prefer not to answer

[If (a) selected]: How much do you think global warming is affecting weather in the U.S.?

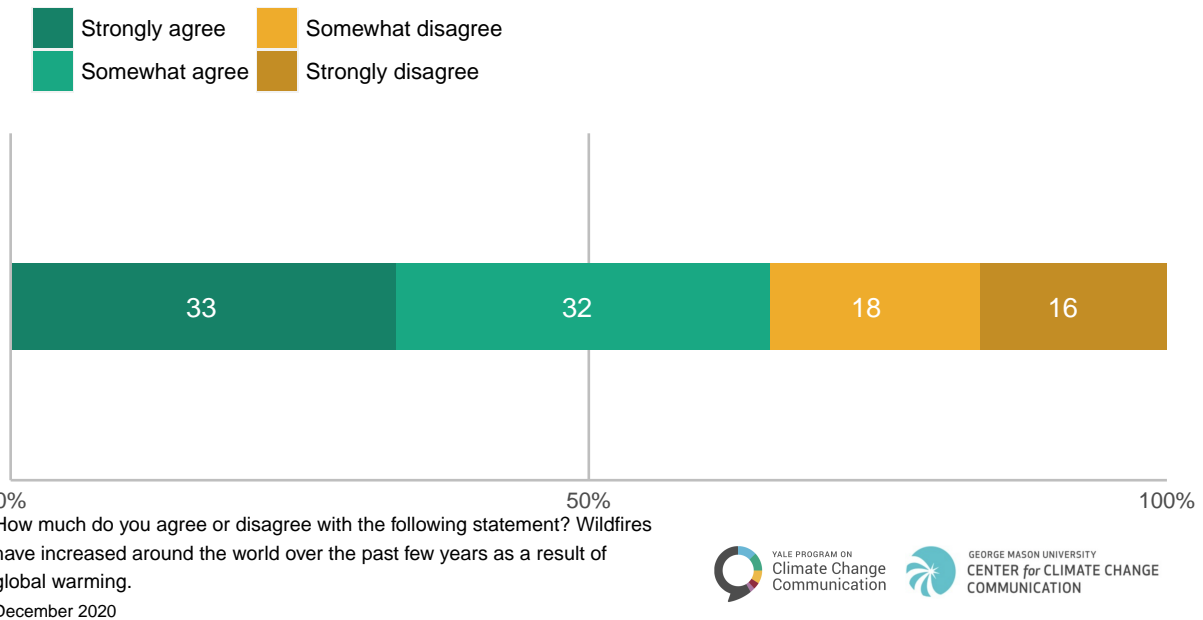
December 2020



8.2 Two in three Americans think wildfires have increased as a result of global warming.

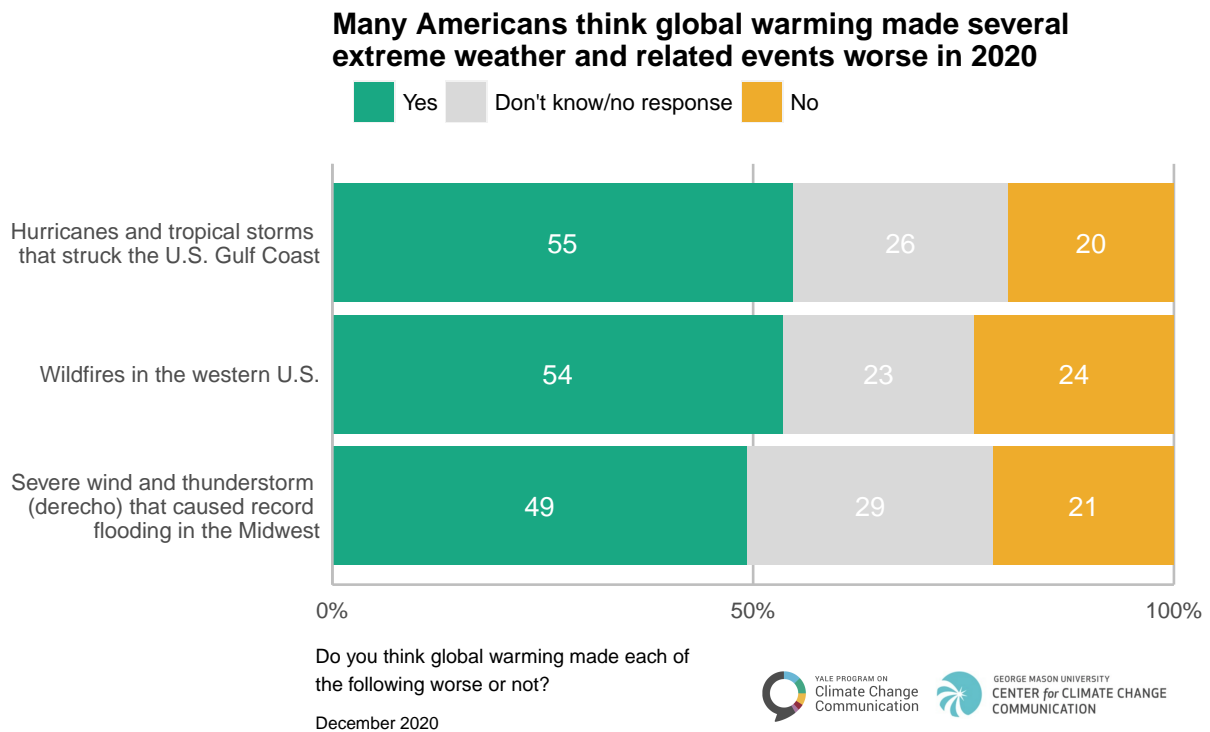
About two in three Americans either “strongly” (33%) or “somewhat” (32%) agree that wildfires have increased around the world as a result of global warming.

Two in three Americans think wildfires have increased as a result of global warming



8.3 Many Americans think global warming made several extreme weather and related events worse in 2020.

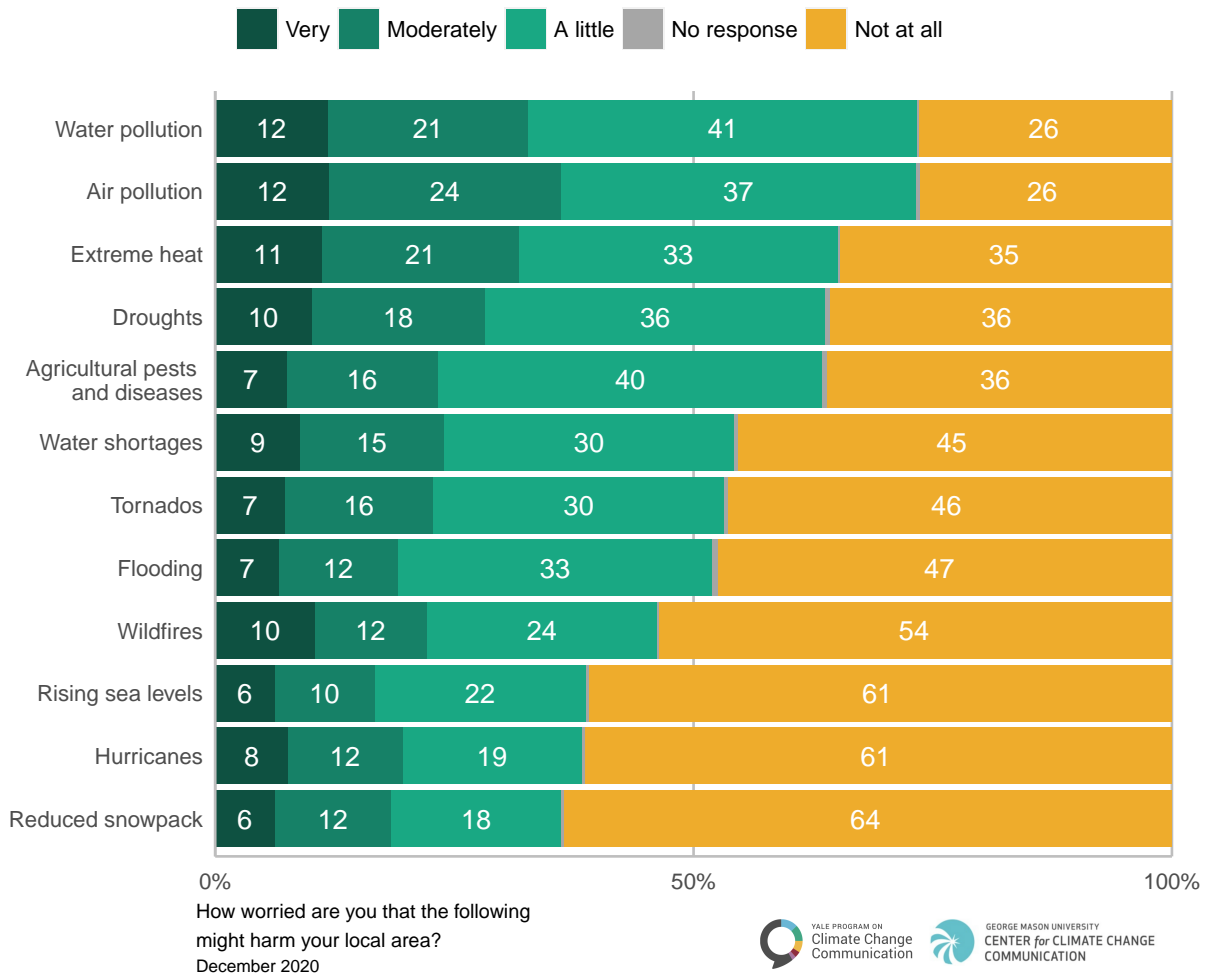
More than half of Americans think global warming made the hurricanes and tropical storms that struck the U.S. Gulf Coast in 2020 (55%) and wildfires in the western U.S. (54%) worse, and about half think global warming made the derecho that caused record flooding in the Midwest (49%) worse.



8.4 A majority of Americans are worried about harm from environmental hazards in their local area.

A majority of Americans are at least “a little worried” about environmental hazards in their local areas, including water pollution (73%), air pollution (73%), extreme heat (65%), droughts (64%), agricultural pests and diseases (64%), water shortages (54%), tornados (53%), and flooding (52%). Fewer are worried about wildfires (46%), rising sea levels (39%), hurricanes (38%), or reduced snowpack (36%).

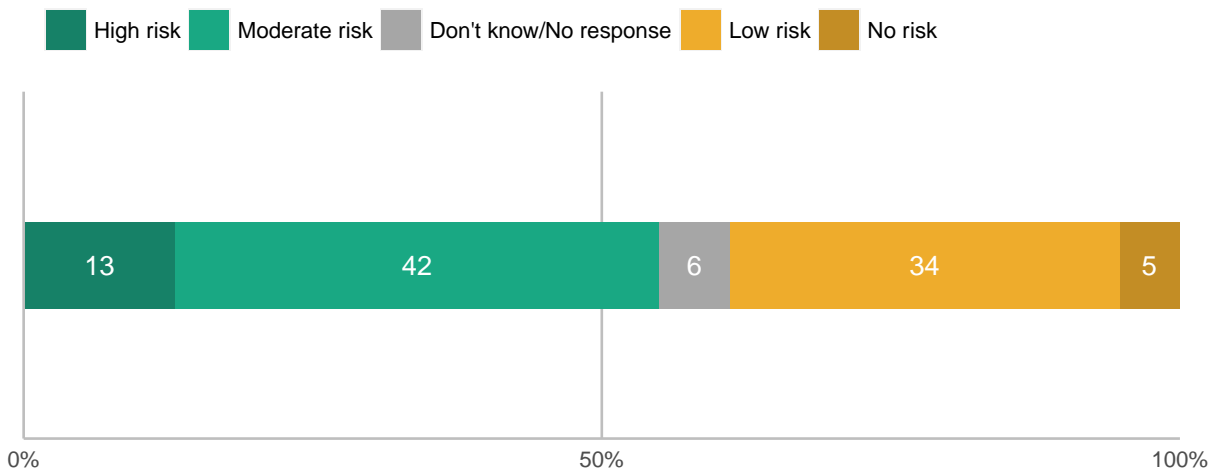
A majority of Americans are worried about harm from environmental hazards in their local area



8.5 A majority of Americans think extreme weather poses a risk to their community.

A majority of Americans (55%) think extreme weather poses either a “high” (13%) or “moderate” (42%) risk to their community over the next 10 years. Fewer think extreme weather poses either a “low” risk (34%) or “no” risk (5%).

A majority of Americans think extreme weather poses a risk to their community



In your opinion, over the next 10 years how much risk does extreme weather pose to your community?

December 2020



9 Appendix I: Data Tables

Note: NaN = “No available number” (i.e., the question was not asked in that survey wave).

(Base: Americans 18+)

Recently, you may have noticed that global warming has been getting some attention in the news. Global warming refers to the idea that the world’s average temperature has been increasing over the past 150 years, may be increasing more in the future, and that the world’s climate may change as a result.

What do you think: Do you think that global warming is happening?

| | Nov 2008 | Jan 2010 | Jun 2010 | May 2011 | Nov 2011 | Mar 2012 | Sep 2012 | Apr 2013 |
|-------------------|----------|----------|----------|----------|----------|----------|----------|----------|
| (Unweighted Base) | 2,164 | 1,001 | 1,024 | 1,010 | 1,000 | 1,008 | 1,061 | 1,045 |
| Yes (%) | 71 | 57 | 61 | 63 | 62 | 66 | 70 | 63 |
| No (%) | 10 | 20 | 18 | 18 | 16 | 14 | 12 | 16 |
| Don't Know (%) | 19 | 22 | 21 | 18 | 19 | 20 | 18 | 20 |
| Refused (%) | 0 | 1 | 0 | 1 | 3 | 1 | 0 | 1 |

| | Nov 2013 | Apr 2014 | Oct 2014 | Mar 2015 | Oct 2015 | Mar 2016 | Nov 2016 | May 2017 |
|-------------------|----------|----------|----------|----------|----------|----------|----------|----------|
| (Unweighted Base) | 830 | 1,013 | 1,275 | 1,263 | 1,330 | 1,204 | 1,226 | 1,266 |
| Yes (%) | 62 | 64 | 66 | 63 | 67 | 70 | 70 | 70 |
| No (%) | 23 | 19 | 16 | 18 | 15 | 11 | 13 | 13 |
| Don't Know (%) | 14 | 17 | 18 | 19 | 18 | 18 | 17 | 16 |
| Refused (%) | 1 | 0 | 0 | 0 | 0 | 0 | 0 | 0 |

| | Oct 2017 | Mar 2018 | Dec 2018 | Apr 2019 | Nov 2019 | Apr 2020 | Dec 2020 |
|-------------------|----------|----------|----------|----------|----------|----------|----------|
| (Unweighted Base) | 1,304 | 1,278 | 1,114 | 1,291 | 1,303 | 1,029 | 1,036 |
| Yes (%) | 71 | 70 | 73 | 69 | 72 | 73 | 72 |
| No (%) | 13 | 14 | 14 | 16 | 12 | 10 | 13 |
| Don't Know (%) | 15 | 16 | 13 | 16 | 16 | 16 | 15 |
| Refused (%) | 0 | 0 | 0 | 0 | 0 | 0 | 0 |

(Base: Americans 18+ who say global warming is happening)

How sure are you that global warming is happening?

| | Nov 2008 | Jan 2010 | Jun 2010 | May 2011 | Nov 2011 | Mar 2012 | Sep 2012 | Apr 2013 |
|---------------------|----------|----------|----------|----------|----------|----------|----------|----------|
| (Unweighted Base) | 1,537 | 567 | 624 | 634 | 617 | 662 | 743 | 658 |
| Extremely sure (%) | 35 | 24 | 20 | 21 | 22 | 19 | 27 | 27 |
| Very sure (%) | 37 | 35 | 36 | 33 | 34 | 34 | 30 | 33 |
| Somewhat sure (%) | 24 | 37 | 40 | 40 | 38 | 42 | 40 | 37 |
| Not at all sure (%) | 4 | 5 | 3 | 6 | 5 | 5 | 3 | 4 |
| Refused (%) | 0 | 0 | 1 | 0 | 1 | 0 | 0 | 0 |

| | Nov 2013 | Apr 2014 | Oct 2014 | Mar 2015 | Oct 2015 | Mar 2016 | Nov 2016 | May 2017 |
|---------------------|----------|----------|----------|----------|----------|----------|----------|----------|
| (Unweighted Base) | 518 | 647 | 837 | 800 | 891 | 849 | 859 | 889 |
| Extremely sure (%) | 27 | 30 | 24 | 27 | 28 | 30 | 35 | 31 |
| Very sure (%) | 31 | 32 | 34 | 31 | 32 | 31 | 30 | 34 |
| Somewhat sure (%) | 39 | 33 | 38 | 38 | 37 | 34 | 32 | 33 |
| Not at all sure (%) | 3 | 4 | 4 | 3 | 3 | 4 | 4 | 2 |
| Refused (%) | 0 | 0 | 0 | 0 | 0 | 0 | 0 | 0 |

| | Oct 2017 | Mar 2018 | Dec 2018 | Apr 2019 | Nov 2019 | Apr 2020 | Dec 2020 |
|---------------------|----------|----------|----------|----------|----------|----------|----------|
| (Unweighted Base) | 931 | 897 | 813 | 887 | 937 | 755 | 751 |
| Extremely sure (%) | 34 | 41 | 42 | 39 | 43 | 44 | 42 |
| Very sure (%) | 31 | 29 | 28 | 28 | 30 | 29 | 27 |
| Somewhat sure (%) | 32 | 27 | 27 | 29 | 24 | 24 | 28 |
| Not at all sure (%) | 2 | 3 | 3 | 3 | 3 | 3 | 2 |
| Refused (%) | 0 | 0 | 0 | 0 | 0 | 0 | 0 |

(Base: Americans 18+ who say global warming is not happening)

How sure are you that global warming is not happening?

| | Nov 2008 | Jan 2010 | Jun 2010 | May 2011 | Nov 2011 | Mar 2012 | Sep 2012 | Apr 2013 |
|---------------------|----------|----------|----------|----------|----------|----------|----------|----------|
| (Unweighted Base) | 210 | 200 | 186 | 179 | 162 | 140 | 131 | 168 |
| Extremely sure (%) | 26 | 27 | 20 | 21 | 21 | 15 | 14 | 18 |
| Very sure (%) | 28 | 30 | 31 | 30 | 37 | 41 | 27 | 28 |
| Somewhat sure (%) | 38 | 33 | 44 | 38 | 36 | 35 | 45 | 42 |
| Not at all sure (%) | 8 | 7 | 4 | 11 | 5 | 8 | 13 | 12 |
| Refused (%) | 0 | 4 | 0 | 0 | 1 | 0 | 0 | 0 |

| | Nov 2013 | Apr 2014 | Oct 2014 | Mar 2015 | Oct 2015 | Mar 2016 | Nov 2016 | May 2017 |
|---------------------|----------|----------|----------|----------|----------|----------|----------|----------|
| (Unweighted Base) | 188 | 193 | 206 | 227 | 206 | 133 | 155 | 169 |
| Extremely sure (%) | 20 | 15 | 23 | 21 | 21 | 20 | 24 | 26 |
| Very sure (%) | 35 | 26 | 30 | 31 | 32 | 37 | 29 | 26 |
| Somewhat sure (%) | 36 | 47 | 35 | 37 | 36 | 34 | 39 | 41 |
| Not at all sure (%) | 9 | 12 | 11 | 11 | 12 | 9 | 8 | 7 |
| Refused (%) | 0 | 0 | 0 | 0 | 0 | 0 | 0 | 0 |

| | Oct 2017 | Mar 2018 | Dec 2018 | Apr 2019 | Nov 2019 | Apr 2020 | Dec 2020 |
|---------------------|----------|----------|----------|----------|----------|----------|----------|
| (Unweighted Base) | 171 | 175 | 156 | 200 | 160 | 104 | 130 |
| Extremely sure (%) | 19 | 15 | 20 | 22 | 32 | 17 | 19 |
| Very sure (%) | 33 | 39 | 30 | 31 | 24 | 38 | 28 |
| Somewhat sure (%) | 39 | 35 | 41 | 36 | 38 | 36 | 33 |
| Not at all sure (%) | 9 | 12 | 8 | 11 | 5 | 9 | 18 |
| Refused (%) | 0 | 0 | 0 | 0 | 1 | 0 | 1 |

(Base: Americans 18+)**Assuming global warming is happening, do you think it is...**

| | Nov 2008 | Jan 2010 | Jun 2010 | May 2011 | Nov 2011 | Mar 2012 | Sep 2012 | Apr 2013 |
|--|----------|----------|----------|----------|----------|----------|----------|----------|
| (Unweighted Base) | 2,164 | 1,001 | 1,024 | 1,010 | 1,000 | 1,008 | 1,061 | 1,045 |
| Caused mostly by human activities (%) | 57 | 46 | 50 | 47 | 49 | 46 | 54 | 49 |
| Caused mostly by natural changes (%) | 32 | 35 | 34 | 35 | 32 | 37 | 32 | 33 |
| Neither, because it isn't happening (%) | 4 | 9 | 6 | 8 | 8 | 5 | 7 | 8 |
| Other (caused by human activities and natural changes) (%) | 5 | 6 | 7 | 7 | 6 | 9 | 5 | 7 |
| Other (unclassified) (%) | 1 | 1 | 1 | 1 | 2 | 2 | 1 | 2 |
| Don't know (%) | 1 | 1 | 1 | 1 | 1 | 1 | 1 | 0 |
| Refused (%) | 1 | 2 | 1 | 1 | 3 | 1 | 0 | 1 |

| | Nov 2013 | Apr 2014 | Oct 2014 | Mar 2015 | Oct 2015 | Mar 2016 | Nov 2016 | May 2017 |
|--|----------|----------|----------|----------|----------|----------|----------|----------|
| (Unweighted Base) | 830 | 1,013 | 1,275 | 1,263 | 1,330 | 1,204 | 1,226 | 1,266 |
| Caused mostly by human activities (%) | 47 | 52 | 51 | 52 | 53 | 53 | 55 | 58 |
| Caused mostly by natural changes (%) | 36 | 33 | 33 | 32 | 33 | 34 | 30 | 30 |
| Neither, because it isn't happening (%) | 8 | 7 | 9 | 10 | 8 | 7 | 8 | 6 |
| Other (caused by human activities and natural changes) (%) | 5 | 5 | 6 | 4 | 5 | 5 | 5 | 6 |
| Other (unclassified) (%) | 3 | 1 | 1 | 1 | 1 | 1 | 1 | 1 |
| Don't know (%) | 0 | 1 | 1 | 1 | 0 | 1 | 1 | 1 |
| Refused (%) | 1 | 1 | 0 | 0 | 0 | 0 | 0 | 0 |

| | Oct 2017 | Mar 2018 | Dec 2018 | Apr 2019 | Nov 2019 | Apr 2020 | Dec 2020 |
|--|----------|----------|----------|----------|----------|----------|----------|
| (Unweighted Base) | 1,304 | 1,278 | 1,114 | 1,291 | 1,303 | 1,029 | 1,036 |
| Caused mostly by human activities (%) | 54 | 58 | 62 | 55 | 59 | 62 | 58 |
| Caused mostly by natural changes (%) | 33 | 28 | 23 | 32 | 30 | 29 | 29 |
| Neither, because it isn't happening (%) | 6 | 7 | 8 | 6 | 5 | 5 | 5 |
| Other (caused by human activities and natural changes) (%) | 6 | 5 | 6 | 6 | 5 | 5 | 6 |
| Other (unclassified) (%) | 1 | 1 | 0 | 1 | 1 | 0 | 1 |
| Don't know (%) | 0 | 0 | 0 | 1 | 0 | 0 | 0 |
| Refused (%) | 0 | 0 | 0 | 0 | 0 | 0 | 0 |

(Base: Americans 18+)**What comes closest to your view?**

| | Nov 2008 | Jan 2010 | Jun 2010 | May 2011 | Nov 2011 | Mar 2012 | Sep 2012 | Apr 2013 |
|--|----------|----------|----------|----------|----------|----------|----------|----------|
| (Unweighted Base) | 2,164 | 1,001 | 1,024 | 1,010 | 1,000 | 1,008 | 1,061 | 1,045 |
| Most scientists think global warming is happening (%) | 46 | 33 | 34 | 38 | 40 | 34 | 44 | 42 |
| Most scientists think global warming is not happening (%) | 2 | 5 | 4 | 4 | 3 | 3 | 3 | 4 |
| There is a lot of disagreement among scientists about whether or not global warming is happening (%) | 33 | 39 | 45 | 39 | 38 | 41 | 36 | 33 |
| Don't know enough to say (%) | 18 | 21 | 17 | 18 | 17 | 21 | 18 | 20 |
| Refused (%) | 1 | 2 | 0 | 1 | 2 | 1 | 0 | 1 |

| | Nov 2013 | Apr 2014 | Oct 2014 | Mar 2015 | Oct 2015 | Mar 2016 | Nov 2016 | May 2017 |
|--|----------|----------|----------|----------|----------|----------|----------|----------|
| (Unweighted Base) | 830 | 1,013 | 1,275 | 1,263 | 0 | 1,204 | 1,226 | 1,266 |
| Most scientists think global warming is happening (%) | 42 | 40 | 44 | 40 | NaN | 48 | 51 | 49 |
| Most scientists think global warming is not happening (%) | 6 | 5 | 3 | 3 | NaN | 3 | 3 | 3 |
| There is a lot of disagreement among scientists about whether or not global warming is happening (%) | 33 | 32 | 31 | 32 | NaN | 28 | 27 | 27 |
| Don't know enough to say (%) | 18 | 23 | 22 | 25 | NaN | 21 | 18 | 21 |
| Refused (%) | 1 | 0 | 0 | 0 | NaN | 0 | 0 | 0 |

| | Oct 2017 | Mar 2018 | Dec 2018 | Apr 2019 | Nov 2019 | Apr 2020 | Dec 2020 |
|--|----------|----------|----------|----------|----------|----------|----------|
| (Unweighted Base) | 1,304 | 1,278 | 1,114 | 1,291 | 1,303 | 1,029 | 1,036 |
| Most scientists think global warming is happening (%) | 56 | 49 | 57 | 53 | 55 | 56 | 58 |
| Most scientists think global warming is not happening (%) | 2 | 2 | 3 | 3 | 4 | 3 | 3 |
| There is a lot of disagreement among scientists about whether or not global warming is happening (%) | 27 | 27 | 25 | 25 | 24 | 24 | 23 |
| Don't know enough to say (%) | 14 | 21 | 14 | 19 | 17 | 16 | 16 |
| Refused (%) | 0 | 0 | 0 | 0 | 0 | 0 | 0 |

(Base: Americans 18+)

To the best of your knowledge, what percentage of climate scientists think that human-caused global warming is happening? Please click on the slider bar below to indicate your answer. You can slide the indicator to the position that best describes your opinion.

| | Apr 2014 | Oct 2014 | Mar 2015 | Oct 2015 | Mar 2016 | Nov 2016 | May 2017 |
|--------------------------|----------|----------|----------|----------|----------|----------|----------|
| (Unweighted Base) | 1,013 | 1,275 | 1,263 | 1,330 | 1,204 | 1,226 | 1,266 |
| 0%-10% (%) | 1 | 1 | 1 | 2 | 1 | 2 | 2 |
| 11%-20% (%) | 1 | 1 | 1 | 2 | 1 | 1 | 1 |
| 21%-30% (%) | 5 | 4 | 4 | 4 | 4 | 7 | 4 |
| 31%-40% (%) | 3 | 2 | 2 | 2 | 2 | 3 | 3 |
| 41%-50% (%) | 15 | 15 | 14 | 12 | 13 | 13 | 13 |
| 51%-60% (%) | 8 | 7 | 6 | 5 | 6 | 6 | 7 |
| 61%-70% (%) | 7 | 7 | 8 | 6 | 8 | 7 | 6 |
| 71%-80% (%) | 14 | 17 | 15 | 18 | 15 | 17 | 14 |
| 81%-90% (%) | 7 | 7 | 8 | 10 | 8 | 9 | 10 |
| 91%-100% (%) | 9 | 9 | 9 | 12 | 11 | 15 | 13 |
| Don't know enough to say | 28 | 29 | 31 | 27 | 32 | 21 | 28 |

| | Oct 2017 | Mar 2018 | Dec 2018 | Apr 2019 | Nov 2019 | Apr 2020 | Dec 2020 |
|--------------------------|----------|----------|----------|----------|----------|----------|----------|
| (Unweighted Base) | 1,304 | 1,278 | 1,113 | 1,291 | 1,303 | 1,029 | 1,036 |
| 0%-10% (%) | 1 | 1 | 1 | 1 | 2 | 1 | 1 |
| 11%-20% (%) | 1 | 1 | 1 | 1 | 1 | 1 | 1 |
| 21%-30% (%) | 5 | 4 | 1 | 2 | 2 | 2 | 1 |
| 31%-40% (%) | 3 | 1 | 2 | 3 | 3 | 2 | 3 |
| 41%-50% (%) | 13 | 10 | 15 | 17 | 10 | 11 | 10 |
| 51%-60% (%) | 5 | 4 | 6 | 7 | 8 | 10 | 8 |
| 61%-70% (%) | 5 | 5 | 6 | 7 | 8 | 6 | 7 |
| 71%-80% (%) | 17 | 15 | 15 | 12 | 12 | 13 | 14 |
| 81%-90% (%) | 10 | 10 | 11 | 10 | 11 | 11 | 13 |
| 91%-100% (%) | 15 | 15 | 20 | 17 | 22 | 21 | 20 |
| Don't know enough to say | 24 | 34 | 22 | 21 | 21 | 22 | 22 |

(Base: Americans 18+)**How worried are you about global warming?**

| | Nov 2008 | Jan 2010 | Jun 2010 | May 2011 | Nov 2011 | Mar 2012 | Sep 2012 | Apr 2013 |
|------------------------|----------|----------|----------|----------|----------|----------|----------|----------|
| (Unweighted Base) | 2,164 | 1,001 | 1,024 | 1,010 | 1,000 | 1,008 | 1,061 | 1,045 |
| Very worried (%) | 16 | 11 | 12 | 9 | 12 | 11 | 16 | 14 |
| Somewhat worried (%) | 46 | 37 | 41 | 42 | 41 | 42 | 42 | 37 |
| Not very worried (%) | 24 | 27 | 30 | 28 | 30 | 30 | 25 | 30 |
| Not at all worried (%) | 13 | 22 | 18 | 20 | 15 | 16 | 17 | 19 |
| Refused (%) | 1 | 2 | 0 | 1 | 2 | 1 | 0 | 0 |

| | Nov 2013 | Apr 2014 | Oct 2014 | Mar 2015 | Oct 2015 | Mar 2016 | Nov 2016 | May 2017 |
|------------------------|----------|----------|----------|----------|----------|----------|----------|----------|
| (Unweighted Base) | 830 | 1,013 | 1,275 | 1,263 | 1,330 | 1,204 | 1,226 | 1,266 |
| Very worried (%) | 15 | 15 | 11 | 11 | 16 | 16 | 19 | 17 |
| Somewhat worried (%) | 38 | 41 | 45 | 41 | 41 | 42 | 42 | 39 |
| Not very worried (%) | 26 | 27 | 26 | 29 | 27 | 25 | 24 | 27 |
| Not at all worried (%) | 20 | 18 | 18 | 19 | 16 | 18 | 15 | 17 |
| Refused (%) | 1 | 0 | 0 | 0 | 0 | 0 | 0 | 0 |

| | Oct 2017 | Mar 2018 | Dec 2018 | Apr 2019 | Nov 2019 | Apr 2020 | Dec 2020 |
|------------------------|----------|----------|----------|----------|----------|----------|----------|
| (Unweighted Base) | 1,304 | 1,278 | 1,114 | 1,291 | 1,303 | 1,029 | 1,036 |
| Very worried (%) | 22 | 21 | 29 | 23 | 30 | 26 | 27 |
| Somewhat worried (%) | 42 | 41 | 40 | 39 | 36 | 40 | 39 |
| Not very worried (%) | 23 | 22 | 19 | 23 | 19 | 22 | 20 |
| Not at all worried (%) | 14 | 16 | 13 | 14 | 15 | 12 | 14 |
| Refused (%) | 0 | 0 | 0 | 0 | 0 | 0 | 0 |

(Base: Americans 18+)**How strongly do you feel each of the following emotions when you think about this issue of global warming?****Interested**

| | Nov 2008 | Jan 2010 | Jun 2010 | May 2011 | Nov 2011 | Mar 2012 | Sep 2012 | Apr 2013 |
|-------------------|----------|----------|----------|----------|----------|----------|----------|----------|
| (Unweighted Base) | 0 | 1,001 | 1,024 | 1,010 | 0 | 0 | 0 | 0 |
| Very (%) | NaN | 20 | 19 | 22 | NaN | NaN | NaN | NaN |
| Moderately (%) | NaN | 42 | 47 | 42 | NaN | NaN | NaN | NaN |
| Not very (%) | NaN | 15 | 15 | 15 | NaN | NaN | NaN | NaN |
| Not at all (%) | NaN | 18 | 15 | 18 | NaN | NaN | NaN | NaN |
| Refused (%) | NaN | 5 | 3 | 3 | NaN | NaN | NaN | NaN |

| | Nov 2013 | Apr 2014 | Oct 2014 | Mar 2015 | Oct 2015 | Mar 2016 | Nov 2016 | May 2017 |
|-------------------|----------|----------|----------|----------|----------|----------|----------|----------|
| (Unweighted Base) | 830 | 0 | 0 | 0 | 1,330 | 1,204 | 1,226 | 0 |
| Very (%) | 21 | NaN | NaN | NaN | 23 | 22 | 23 | NaN |
| Moderately (%) | 38 | NaN | NaN | NaN | 43 | 45 | 43 | NaN |
| Not very (%) | 19 | NaN | NaN | NaN | 18 | 16 | 15 | NaN |
| Not at all (%) | 19 | NaN | NaN | NaN | 14 | 16 | 18 | NaN |
| Refused (%) | 3 | NaN | NaN | NaN | 1 | 1 | 1 | NaN |

| | Oct 2017 | Mar 2018 | Dec 2018 | Apr 2019 | Nov 2019 | Apr 2020 | Dec 2020 |
|-------------------|----------|----------|----------|----------|----------|----------|----------|
| (Unweighted Base) | 1,304 | 1,278 | 1,114 | 0 | 1,303 | 1,029 | 1,036 |
| Very (%) | 24 | 19 | 25 | NaN | 23 | 19 | 19 |
| Moderately (%) | 43 | 42 | 44 | NaN | 41 | 44 | 41 |
| Not very (%) | 20 | 20 | 18 | NaN | 17 | 17 | 18 |
| Not at all (%) | 12 | 15 | 12 | NaN | 18 | 18 | 21 |
| Refused (%) | 1 | 2 | 1 | NaN | 1 | 1 | 1 |

(Base: Americans 18+)**How strongly do you feel each of the following emotions when you think about the issue of global warming?
(Cont'd)****Hopeful**

| | Nov 2008 | Jan 2010 | Jun 2010 | May 2011 | Nov 2011 | Mar 2012 | Sep 2012 | Apr 2013 |
|-------------------|----------|----------|----------|----------|----------|----------|----------|----------|
| (Unweighted Base) | 0 | 1,001 | 1,024 | 1,010 | 0 | 0 | 0 | 0 |
| Very (%) | NaN | 9 | 10 | 9 | NaN | NaN | NaN | NaN |
| Moderately (%) | NaN | 34 | 35 | 34 | NaN | NaN | NaN | NaN |
| Not very (%) | NaN | 29 | 29 | 27 | NaN | NaN | NaN | NaN |
| Not at all (%) | NaN | 23 | 24 | 25 | NaN | NaN | NaN | NaN |
| Refused (%) | NaN | 5 | 3 | 4 | NaN | NaN | NaN | NaN |

| | Nov 2013 | Apr 2014 | Oct 2014 | Mar 2015 | Oct 2015 | Mar 2016 | Nov 2016 | May 2017 |
|-------------------|----------|----------|----------|----------|----------|----------|----------|----------|
| (Unweighted Base) | 830 | 0 | 0 | 0 | 1,330 | 1,204 | 1,226 | 0 |
| Very (%) | 9 | NaN | NaN | NaN | 11 | 10 | 11 | NaN |
| Moderately (%) | 33 | NaN | NaN | NaN | 39 | 38 | 38 | NaN |
| Not very (%) | 31 | NaN | NaN | NaN | 32 | 30 | 30 | NaN |
| Not at all (%) | 24 | NaN | NaN | NaN | 17 | 20 | 21 | NaN |
| Refused (%) | 3 | NaN | NaN | NaN | 1 | 1 | 1 | NaN |

| | Oct 2017 | Mar 2018 | Dec 2018 | Apr 2019 | Nov 2019 | Apr 2020 | Dec 2020 |
|-------------------|----------|----------|----------|----------|----------|----------|----------|
| (Unweighted Base) | 1,304 | 1,278 | 1,114 | 0 | 1,303 | 1,029 | 1,036 |
| Very (%) | 7 | 7 | 10 | NaN | 9 | 10 | 7 |
| Moderately (%) | 37 | 35 | 38 | NaN | 33 | 35 | 36 |
| Not very (%) | 39 | 36 | 34 | NaN | 34 | 30 | 31 |
| Not at all (%) | 16 | 19 | 17 | NaN | 22 | 23 | 25 |
| Refused (%) | 2 | 3 | 1 | NaN | 1 | 2 | 1 |

(Base: Americans 18+)**How strongly do you feel each of the following emotions when you think about the issue of global warming?
(Cont'd)****Disgusted**

| | Nov 2008 | Jan 2010 | Jun 2010 | May 2011 | Nov 2011 | Mar 2012 | Sep 2012 | Apr 2013 |
|-------------------|----------|----------|----------|----------|----------|----------|----------|----------|
| (Unweighted Base) | 0 | 1,001 | 1,024 | 1,010 | 0 | 0 | 0 | 0 |
| Very (%) | NaN | 20 | 14 | 15 | NaN | NaN | NaN | NaN |
| Moderately (%) | NaN | 29 | 33 | 31 | NaN | NaN | NaN | NaN |
| Not very (%) | NaN | 22 | 23 | 22 | NaN | NaN | NaN | NaN |
| Not at all (%) | NaN | 24 | 27 | 28 | NaN | NaN | NaN | NaN |
| Refused (%) | NaN | 5 | 4 | 4 | NaN | NaN | NaN | NaN |

| | Nov 2013 | Apr 2014 | Oct 2014 | Mar 2015 | Oct 2015 | Mar 2016 | Nov 2016 | May 2017 |
|-------------------|----------|----------|----------|----------|----------|----------|----------|----------|
| (Unweighted Base) | 830 | 0 | 0 | 0 | 0 | 1,204 | 1,226 | 0 |
| Very (%) | 17 | NaN | NaN | NaN | NaN | 14 | 15 | NaN |
| Moderately (%) | 25 | NaN | NaN | NaN | NaN | 34 | 28 | NaN |
| Not very (%) | 26 | NaN | NaN | NaN | NaN | 25 | 28 | NaN |
| Not at all (%) | 29 | NaN | NaN | NaN | NaN | 26 | 28 | NaN |
| Refused (%) | 3 | NaN | NaN | NaN | NaN | 1 | 1 | NaN |

| | Oct 2017 | Mar 2018 | Dec 2018 | Apr 2019 | Nov 2019 | Apr 2020 | Dec 2020 |
|-------------------|----------|----------|----------|----------|----------|----------|----------|
| (Unweighted Base) | 1,304 | 1,278 | 1,114 | 0 | 1,303 | 1,029 | 1,036 |
| Very (%) | 22 | 14 | 19 | NaN | 20 | 16 | 13 |
| Moderately (%) | 33 | 33 | 34 | NaN | 30 | 30 | 29 |
| Not very (%) | 25 | 26 | 24 | NaN | 21 | 20 | 22 |
| Not at all (%) | 19 | 25 | 22 | NaN | 28 | 33 | 35 |
| Refused (%) | 2 | 3 | 1 | NaN | 1 | 1 | 1 |

(Base: Americans 18+)**How strongly do you feel each of the following emotions when you think about the issue of global warming?
(Cont'd)****Helpless**

| | Nov 2008 | Jan 2010 | Jun 2010 | May 2011 | Nov 2011 | Mar 2012 | Sep 2012 | Apr 2013 |
|-------------------|----------|----------|----------|----------|----------|----------|----------|----------|
| (Unweighted Base) | 0 | 1,001 | 1,024 | 1,010 | 0 | 0 | 0 | 0 |
| Very (%) | NaN | 13 | 11 | 12 | NaN | NaN | NaN | NaN |
| Moderately (%) | NaN | 29 | 32 | 33 | NaN | NaN | NaN | NaN |
| Not very (%) | NaN | 23 | 23 | 20 | NaN | NaN | NaN | NaN |
| Not at all (%) | NaN | 30 | 30 | 32 | NaN | NaN | NaN | NaN |
| Refused (%) | NaN | 4 | 3 | 3 | NaN | NaN | NaN | NaN |

| | Nov 2013 | Apr 2014 | Oct 2014 | Mar 2015 | Oct 2015 | Mar 2016 | Nov 2016 | May 2017 |
|-------------------|----------|----------|----------|----------|----------|----------|----------|----------|
| (Unweighted Base) | 830 | 0 | 0 | 0 | 1,330 | 1,204 | 1,226 | 0 |
| Very (%) | 15 | NaN | NaN | NaN | 14 | 13 | 12 | NaN |
| Moderately (%) | 27 | NaN | NaN | NaN | 39 | 36 | 34 | NaN |
| Not very (%) | 24 | NaN | NaN | NaN | 25 | 23 | 26 | NaN |
| Not at all (%) | 30 | NaN | NaN | NaN | 21 | 27 | 26 | NaN |
| Refused (%) | 3 | NaN | NaN | NaN | 1 | 1 | 1 | NaN |

| | Oct 2017 | Mar 2018 | Dec 2018 | Apr 2019 | Nov 2019 | Apr 2020 | Dec 2020 |
|-------------------|----------|----------|----------|----------|----------|----------|----------|
| (Unweighted Base) | 1,304 | 1,278 | 1,114 | 0 | 1,303 | 1,029 | 1,036 |
| Very (%) | 15 | 10 | 14 | NaN | 17 | 10 | 8 |
| Moderately (%) | 37 | 35 | 37 | NaN | 36 | 29 | 32 |
| Not very (%) | 26 | 27 | 25 | NaN | 20 | 24 | 22 |
| Not at all (%) | 20 | 25 | 24 | NaN | 26 | 35 | 36 |
| Refused (%) | 2 | 3 | 1 | NaN | 1 | 1 | 1 |

(Base: Americans 18+)**How strongly do you feel each of the following emotions when you think about the issue of global warming?
(Cont'd)****Angry**

| | Nov 2008 | Jan 2010 | Jun 2010 | May 2011 | Nov 2011 | Mar 2012 | Sep 2012 | Apr 2013 |
|-------------------|----------|----------|----------|----------|----------|----------|----------|----------|
| (Unweighted Base) | 0 | 1,001 | 1,024 | 1,010 | 0 | 0 | 0 | 0 |
| Very (%) | NaN | 15 | 10 | 12 | NaN | NaN | NaN | NaN |
| Moderately (%) | NaN | 28 | 30 | 25 | NaN | NaN | NaN | NaN |
| Not very (%) | NaN | 26 | 28 | 28 | NaN | NaN | NaN | NaN |
| Not at all (%) | NaN | 27 | 30 | 32 | NaN | NaN | NaN | NaN |
| Refused (%) | NaN | 4 | 3 | 3 | NaN | NaN | NaN | NaN |

| | Nov 2013 | Apr 2014 | Oct 2014 | Mar 2015 | Oct 2015 | Mar 2016 | Nov 2016 | May 2017 |
|-------------------|----------|----------|----------|----------|----------|----------|----------|----------|
| (Unweighted Base) | 830 | 0 | 0 | 0 | 0 | 1,204 | 1,226 | 0 |
| Very (%) | 13 | NaN | NaN | NaN | NaN | 12 | 12 | NaN |
| Moderately (%) | 22 | NaN | NaN | NaN | NaN | 29 | 26 | NaN |
| Not very (%) | 30 | NaN | NaN | NaN | NaN | 29 | 31 | NaN |
| Not at all (%) | 32 | NaN | NaN | NaN | NaN | 29 | 30 | NaN |
| Refused (%) | 3 | NaN | NaN | NaN | NaN | 1 | 1 | NaN |

| | Oct 2017 | Mar 2018 | Dec 2018 | Apr 2019 | Nov 2019 | Apr 2020 | Dec 2020 |
|-------------------|----------|----------|----------|----------|----------|----------|----------|
| (Unweighted Base) | 1,304 | 1,278 | 1,114 | 0 | 1,303 | 1,029 | 1,036 |
| Very (%) | 16 | 11 | 15 | NaN | 16 | 13 | 11 |
| Moderately (%) | 32 | 28 | 33 | NaN | 29 | 27 | 26 |
| Not very (%) | 28 | 31 | 27 | NaN | 23 | 23 | 26 |
| Not at all (%) | 22 | 28 | 24 | NaN | 31 | 35 | 36 |
| Refused (%) | 2 | 2 | 1 | NaN | 1 | 1 | 1 |

(Base: Americans 18+)**How strongly do you feel each of the following emotions when you think about the issue of global warming?
(Cont'd)****Afraid**

| | Nov 2008 | Jan 2010 | Jun 2010 | May 2011 | Nov 2011 | Mar 2012 | Sep 2012 | Apr 2013 |
|-------------------|----------|----------|----------|----------|----------|----------|----------|----------|
| (Unweighted Base) | 0 | 1,001 | 1,024 | 1,010 | 0 | 0 | 0 | 0 |
| Very (%) | NaN | 9 | 9 | 12 | NaN | NaN | NaN | NaN |
| Moderately (%) | NaN | 26 | 28 | 27 | NaN | NaN | NaN | NaN |
| Not very (%) | NaN | 27 | 27 | 25 | NaN | NaN | NaN | NaN |
| Not at all (%) | NaN | 34 | 34 | 33 | NaN | NaN | NaN | NaN |
| Refused (%) | NaN | 5 | 3 | 4 | NaN | NaN | NaN | NaN |

| | Nov 2013 | Apr 2014 | Oct 2014 | Mar 2015 | Oct 2015 | Mar 2016 | Nov 2016 | May 2017 |
|-------------------|----------|----------|----------|----------|----------|----------|----------|----------|
| (Unweighted Base) | 830 | 0 | 0 | 0 | 0 | 1,204 | 1,226 | 0 |
| Very (%) | 10 | NaN | NaN | NaN | NaN | 11 | 12 | NaN |
| Moderately (%) | 25 | NaN | NaN | NaN | NaN | 31 | 30 | NaN |
| Not very (%) | 27 | NaN | NaN | NaN | NaN | 26 | 27 | NaN |
| Not at all (%) | 34 | NaN | NaN | NaN | NaN | 30 | 29 | NaN |
| Refused (%) | 3 | NaN | NaN | NaN | NaN | 1 | 1 | NaN |

| | Oct 2017 | Mar 2018 | Dec 2018 | Apr 2019 | Nov 2019 | Apr 2020 | Dec 2020 |
|-------------------|----------|----------|----------|----------|----------|----------|----------|
| (Unweighted Base) | 1,304 | 1,278 | 1,114 | 0 | 1,303 | 1,029 | 1,036 |
| Very (%) | 14 | 10 | 13 | NaN | 15 | 7 | 8 |
| Moderately (%) | 34 | 28 | 36 | NaN | 31 | 28 | 29 |
| Not very (%) | 28 | 31 | 26 | NaN | 23 | 26 | 26 |
| Not at all (%) | 22 | 28 | 24 | NaN | 30 | 38 | 36 |
| Refused (%) | 2 | 3 | 1 | NaN | 1 | 1 | 1 |

(Base: Americans 18+)**How strongly do you feel each of the following emotions when you think about the issue of global warming?
(Cont'd)****Outraged**

| | Nov 2008 | Jan 2010 | Jun 2010 | May 2011 | Nov 2011 | Mar 2012 | Sep 2012 | Apr 2013 |
|-------------------|----------|----------|----------|----------|----------|----------|----------|----------|
| (Unweighted Base) | 0 | 0 | 0 | 0 | 0 | 0 | 0 | 0 |
| Very (%) | NaN | NaN | NaN | NaN | NaN | NaN | NaN | NaN |
| Moderately (%) | NaN | NaN | NaN | NaN | NaN | NaN | NaN | NaN |
| Not very (%) | NaN | NaN | NaN | NaN | NaN | NaN | NaN | NaN |
| Not at all (%) | NaN | NaN | NaN | NaN | NaN | NaN | NaN | NaN |
| Refused (%) | NaN | NaN | NaN | NaN | NaN | NaN | NaN | NaN |

| | Nov 2013 | Apr 2014 | Oct 2014 | Mar 2015 | Oct 2015 | Mar 2016 | Nov 2016 | May 2017 |
|-------------------|----------|----------|----------|----------|----------|----------|----------|----------|
| (Unweighted Base) | 0 | 0 | 0 | 0 | 0 | 1,204 | 1,226 | 0 |
| Very (%) | NaN | NaN | NaN | NaN | NaN | 12 | 12 | NaN |
| Moderately (%) | NaN | NaN | NaN | NaN | NaN | 29 | 24 | NaN |
| Not very (%) | NaN | NaN | NaN | NaN | NaN | 28 | 32 | NaN |
| Not at all (%) | NaN | NaN | NaN | NaN | NaN | 30 | 31 | NaN |
| Refused (%) | NaN | NaN | NaN | NaN | NaN | 1 | 1 | NaN |

| | Oct 2017 | Mar 2018 | Dec 2018 | Apr 2019 | Nov 2019 | Apr 2020 | Dec 2020 |
|-------------------|----------|----------|----------|----------|----------|----------|----------|
| (Unweighted Base) | 1,304 | 1,278 | 1,114 | 0 | 1,303 | 1,029 | 1,036 |
| Very (%) | 15 | 11 | 14 | NaN | 17 | 13 | 10 |
| Moderately (%) | 28 | 26 | 29 | NaN | 28 | 27 | 26 |
| Not very (%) | 32 | 32 | 29 | NaN | 22 | 22 | 25 |
| Not at all (%) | 23 | 29 | 27 | NaN | 32 | 37 | 38 |
| Refused (%) | 2 | 3 | 1 | NaN | 1 | 1 | 1 |

(Base: Americans 18+)**How strongly do you feel each of the following emotions when you think about the issue of global warming?
(Cont'd)****Anxious**

| | Nov 2008 | Jan 2010 | Jun 2010 | May 2011 | Nov 2011 | Mar 2012 | Sep 2012 | Apr 2013 |
|-------------------|----------|----------|----------|----------|----------|----------|----------|----------|
| (Unweighted Base) | 0 | 0 | 0 | 0 | 0 | 0 | 0 | 0 |
| Very (%) | NaN | NaN | NaN | NaN | NaN | NaN | NaN | NaN |
| Moderately (%) | NaN | NaN | NaN | NaN | NaN | NaN | NaN | NaN |
| Not very (%) | NaN | NaN | NaN | NaN | NaN | NaN | NaN | NaN |
| Not at all (%) | NaN | NaN | NaN | NaN | NaN | NaN | NaN | NaN |
| Refused (%) | NaN | NaN | NaN | NaN | NaN | NaN | NaN | NaN |

| | Nov 2013 | Apr 2014 | Oct 2014 | Mar 2015 | Oct 2015 | Mar 2016 | Nov 2016 | May 2017 |
|-------------------|----------|----------|----------|----------|----------|----------|----------|----------|
| (Unweighted Base) | 0 | 0 | 0 | 0 | 0 | 0 | 0 | 0 |
| Very (%) | NaN | NaN | NaN | NaN | NaN | NaN | NaN | NaN |
| Moderately (%) | NaN | NaN | NaN | NaN | NaN | NaN | NaN | NaN |
| Not very (%) | NaN | NaN | NaN | NaN | NaN | NaN | NaN | NaN |
| Not at all (%) | NaN | NaN | NaN | NaN | NaN | NaN | NaN | NaN |
| Refused (%) | NaN | NaN | NaN | NaN | NaN | NaN | NaN | NaN |

| | Oct 2017 | Mar 2018 | Dec 2018 | Apr 2019 | Nov 2019 | Apr 2020 | Dec 2020 |
|-------------------|----------|----------|----------|----------|----------|----------|----------|
| (Unweighted Base) | 0 | 0 | 0 | 0 | 0 | 1,029 | 1,036 |
| Very (%) | NaN | NaN | NaN | NaN | NaN | 7 | 7 |
| Moderately (%) | NaN | NaN | NaN | NaN | NaN | 27 | 24 |
| Not very (%) | NaN | NaN | NaN | NaN | NaN | 26 | 27 |
| Not at all (%) | NaN | NaN | NaN | NaN | NaN | 39 | 41 |
| Refused (%) | NaN | NaN | NaN | NaN | NaN | 1 | 1 |

(Base: Americans 18+)**How strongly do you feel each of the following emotions when you think about the issue of global warming?
(Cont'd)****Confused**

| | Nov 2008 | Jan 2010 | Jun 2010 | May 2011 | Nov 2011 | Mar 2012 | Sep 2012 | Apr 2013 |
|-------------------|----------|----------|----------|----------|----------|----------|----------|----------|
| (Unweighted Base) | 0 | 0 | 0 | 0 | 0 | 0 | 0 | 0 |
| Very (%) | NaN | NaN | NaN | NaN | NaN | NaN | NaN | NaN |
| Moderately (%) | NaN | NaN | NaN | NaN | NaN | NaN | NaN | NaN |
| Not very (%) | NaN | NaN | NaN | NaN | NaN | NaN | NaN | NaN |
| Not at all (%) | NaN | NaN | NaN | NaN | NaN | NaN | NaN | NaN |
| Refused (%) | NaN | NaN | NaN | NaN | NaN | NaN | NaN | NaN |

| | Nov 2013 | Apr 2014 | Oct 2014 | Mar 2015 | Oct 2015 | Mar 2016 | Nov 2016 | May 2017 |
|-------------------|----------|----------|----------|----------|----------|----------|----------|----------|
| (Unweighted Base) | 0 | 0 | 0 | 0 | 0 | 0 | 0 | 0 |
| Very (%) | NaN | NaN | NaN | NaN | NaN | NaN | NaN | NaN |
| Moderately (%) | NaN | NaN | NaN | NaN | NaN | NaN | NaN | NaN |
| Not very (%) | NaN | NaN | NaN | NaN | NaN | NaN | NaN | NaN |
| Not at all (%) | NaN | NaN | NaN | NaN | NaN | NaN | NaN | NaN |
| Refused (%) | NaN | NaN | NaN | NaN | NaN | NaN | NaN | NaN |

| | Oct 2017 | Mar 2018 | Dec 2018 | Apr 2019 | Nov 2019 | Apr 2020 | Dec 2020 |
|-------------------|----------|----------|----------|----------|----------|----------|----------|
| (Unweighted Base) | 0 | 0 | 0 | 0 | 0 | 1,029 | 1,036 |
| Very (%) | NaN | NaN | NaN | NaN | NaN | 5 | 5 |
| Moderately (%) | NaN | NaN | NaN | NaN | NaN | 21 | 24 |
| Not very (%) | NaN | NaN | NaN | NaN | NaN | 31 | 31 |
| Not at all (%) | NaN | NaN | NaN | NaN | NaN | 41 | 40 |
| Refused (%) | NaN | NaN | NaN | NaN | NaN | 1 | 1 |

(Base: Americans 18+)**How strongly do you feel each of the following emotions when you think about the issue of global warming?
(Cont'd)****Hopeless**

| | Nov 2008 | Jan 2010 | Jun 2010 | May 2011 | Nov 2011 | Mar 2012 | Sep 2012 | Apr 2013 |
|-------------------|----------|----------|----------|----------|----------|----------|----------|----------|
| (Unweighted Base) | 0 | 0 | 0 | 0 | 0 | 0 | 0 | 0 |
| Very (%) | NaN | NaN | NaN | NaN | NaN | NaN | NaN | NaN |
| Moderately (%) | NaN | NaN | NaN | NaN | NaN | NaN | NaN | NaN |
| Not very (%) | NaN | NaN | NaN | NaN | NaN | NaN | NaN | NaN |
| Not at all (%) | NaN | NaN | NaN | NaN | NaN | NaN | NaN | NaN |
| Refused (%) | NaN | NaN | NaN | NaN | NaN | NaN | NaN | NaN |

| | Nov 2013 | Apr 2014 | Oct 2014 | Mar 2015 | Oct 2015 | Mar 2016 | Nov 2016 | May 2017 |
|-------------------|----------|----------|----------|----------|----------|----------|----------|----------|
| (Unweighted Base) | 0 | 0 | 0 | 0 | 0 | 0 | 0 | 0 |
| Very (%) | NaN | NaN | NaN | NaN | NaN | NaN | NaN | NaN |
| Moderately (%) | NaN | NaN | NaN | NaN | NaN | NaN | NaN | NaN |
| Not very (%) | NaN | NaN | NaN | NaN | NaN | NaN | NaN | NaN |
| Not at all (%) | NaN | NaN | NaN | NaN | NaN | NaN | NaN | NaN |
| Refused (%) | NaN | NaN | NaN | NaN | NaN | NaN | NaN | NaN |

| | Oct 2017 | Mar 2018 | Dec 2018 | Apr 2019 | Nov 2019 | Apr 2020 | Dec 2020 |
|-------------------|----------|----------|----------|----------|----------|----------|----------|
| (Unweighted Base) | 0 | 0 | 0 | 0 | 0 | 1,029 | 1,036 |
| Very (%) | NaN | NaN | NaN | NaN | NaN | 5 | 4 |
| Moderately (%) | NaN | NaN | NaN | NaN | NaN | 23 | 25 |
| Not very (%) | NaN | NaN | NaN | NaN | NaN | 30 | 28 |
| Not at all (%) | NaN | NaN | NaN | NaN | NaN | 40 | 42 |
| Refused (%) | NaN | NaN | NaN | NaN | NaN | 1 | 1 |

(Base: Americans 18+)**How strongly do you feel each of the following emotions when you think about the issue of global warming?
(Cont'd)****Guilty**

| | Nov 2008 | Jan 2010 | Jun 2010 | May 2011 | Nov 2011 | Mar 2012 | Sep 2012 | Apr 2013 |
|-------------------|----------|----------|----------|----------|----------|----------|----------|----------|
| (Unweighted Base) | 0 | 1,001 | 1,024 | 1,010 | 0 | 0 | 0 | 0 |
| Very (%) | NaN | 4 | 3 | 4 | NaN | NaN | NaN | NaN |
| Moderately (%) | NaN | 20 | 23 | 22 | NaN | NaN | NaN | NaN |
| Not very (%) | NaN | 31 | 31 | 29 | NaN | NaN | NaN | NaN |
| Not at all (%) | NaN | 40 | 40 | 41 | NaN | NaN | NaN | NaN |
| Refused (%) | NaN | 5 | 3 | 4 | NaN | NaN | NaN | NaN |

| | Nov 2013 | Apr 2014 | Oct 2014 | Mar 2015 | Oct 2015 | Mar 2016 | Nov 2016 | May 2017 |
|-------------------|----------|----------|----------|----------|----------|----------|----------|----------|
| (Unweighted Base) | 830 | 0 | 0 | 0 | 0 | 0 | 0 | 0 |
| Very (%) | 4 | NaN | NaN | NaN | NaN | NaN | NaN | NaN |
| Moderately (%) | 22 | NaN | NaN | NaN | NaN | NaN | NaN | NaN |
| Not very (%) | 29 | NaN | NaN | NaN | NaN | NaN | NaN | NaN |
| Not at all (%) | 42 | NaN | NaN | NaN | NaN | NaN | NaN | NaN |
| Refused (%) | 3 | NaN | NaN | NaN | NaN | NaN | NaN | NaN |

| | Oct 2017 | Mar 2018 | Dec 2018 | Apr 2019 | Nov 2019 | Apr 2020 | Dec 2020 |
|-------------------|----------|----------|----------|----------|----------|----------|----------|
| (Unweighted Base) | 0 | 0 | 0 | 0 | 1,303 | 1,029 | 1,036 |
| Very (%) | NaN | NaN | NaN | NaN | 6 | 4 | 3 |
| Moderately (%) | NaN | NaN | NaN | NaN | 27 | 22 | 20 |
| Not very (%) | NaN | NaN | NaN | NaN | 30 | 31 | 31 |
| Not at all (%) | NaN | NaN | NaN | NaN | 36 | 42 | 45 |
| Refused (%) | NaN | NaN | NaN | NaN | 1 | 1 | 1 |

(Base: Americans 18+)**How strongly do you feel each of the following emotions when you think about the issue of global warming?
(Cont'd)****Depressed**

| | Nov 2008 | Jan 2010 | Jun 2010 | May 2011 | Nov 2011 | Mar 2012 | Sep 2012 | Apr 2013 |
|-------------------|----------|----------|----------|----------|----------|----------|----------|----------|
| (Unweighted Base) | 0 | 0 | 0 | 0 | 0 | 0 | 0 | 0 |
| Very (%) | NaN | NaN | NaN | NaN | NaN | NaN | NaN | NaN |
| Moderately (%) | NaN | NaN | NaN | NaN | NaN | NaN | NaN | NaN |
| Not very (%) | NaN | NaN | NaN | NaN | NaN | NaN | NaN | NaN |
| Not at all (%) | NaN | NaN | NaN | NaN | NaN | NaN | NaN | NaN |
| Refused (%) | NaN | NaN | NaN | NaN | NaN | NaN | NaN | NaN |

| | Nov 2013 | Apr 2014 | Oct 2014 | Mar 2015 | Oct 2015 | Mar 2016 | Nov 2016 | May 2017 |
|-------------------|----------|----------|----------|----------|----------|----------|----------|----------|
| (Unweighted Base) | 0 | 0 | 0 | 0 | 0 | 0 | 0 | 0 |
| Very (%) | NaN | NaN | NaN | NaN | NaN | NaN | NaN | NaN |
| Moderately (%) | NaN | NaN | NaN | NaN | NaN | NaN | NaN | NaN |
| Not very (%) | NaN | NaN | NaN | NaN | NaN | NaN | NaN | NaN |
| Not at all (%) | NaN | NaN | NaN | NaN | NaN | NaN | NaN | NaN |
| Refused (%) | NaN | NaN | NaN | NaN | NaN | NaN | NaN | NaN |

| | Oct 2017 | Mar 2018 | Dec 2018 | Apr 2019 | Nov 2019 | Apr 2020 | Dec 2020 |
|-------------------|----------|----------|----------|----------|----------|----------|----------|
| (Unweighted Base) | 0 | 0 | 0 | 0 | 0 | 1,029 | 1,036 |
| Very (%) | NaN | NaN | NaN | NaN | NaN | 5 | 4 |
| Moderately (%) | NaN | NaN | NaN | NaN | NaN | 19 | 17 |
| Not very (%) | NaN | NaN | NaN | NaN | NaN | 27 | 27 |
| Not at all (%) | NaN | NaN | NaN | NaN | NaN | 48 | 50 |
| Refused (%) | NaN | NaN | NaN | NaN | NaN | 1 | 1 |

(Base: Americans 18+)**How strongly do you feel each of the following emotions when you think about the issue of global warming?
(Cont'd)****Panicked**

| | Nov 2008 | Jan 2010 | Jun 2010 | May 2011 | Nov 2011 | Mar 2012 | Sep 2012 | Apr 2013 |
|-------------------|----------|----------|----------|----------|----------|----------|----------|----------|
| (Unweighted Base) | 0 | 0 | 0 | 0 | 0 | 0 | 0 | 0 |
| Very (%) | NaN | NaN | NaN | NaN | NaN | NaN | NaN | NaN |
| Moderately (%) | NaN | NaN | NaN | NaN | NaN | NaN | NaN | NaN |
| Not very (%) | NaN | NaN | NaN | NaN | NaN | NaN | NaN | NaN |
| Not at all (%) | NaN | NaN | NaN | NaN | NaN | NaN | NaN | NaN |
| Refused (%) | NaN | NaN | NaN | NaN | NaN | NaN | NaN | NaN |

| | Nov 2013 | Apr 2014 | Oct 2014 | Mar 2015 | Oct 2015 | Mar 2016 | Nov 2016 | May 2017 |
|-------------------|----------|----------|----------|----------|----------|----------|----------|----------|
| (Unweighted Base) | 0 | 0 | 0 | 0 | 0 | 0 | 0 | 0 |
| Very (%) | NaN | NaN | NaN | NaN | NaN | NaN | NaN | NaN |
| Moderately (%) | NaN | NaN | NaN | NaN | NaN | NaN | NaN | NaN |
| Not very (%) | NaN | NaN | NaN | NaN | NaN | NaN | NaN | NaN |
| Not at all (%) | NaN | NaN | NaN | NaN | NaN | NaN | NaN | NaN |
| Refused (%) | NaN | NaN | NaN | NaN | NaN | NaN | NaN | NaN |

| | Oct 2017 | Mar 2018 | Dec 2018 | Apr 2019 | Nov 2019 | Apr 2020 | Dec 2020 |
|-------------------|----------|----------|----------|----------|----------|----------|----------|
| (Unweighted Base) | 0 | 0 | 0 | 0 | 0 | 1,029 | 1,036 |
| Very (%) | NaN | NaN | NaN | NaN | NaN | 4 | 4 |
| Moderately (%) | NaN | NaN | NaN | NaN | NaN | 16 | 15 |
| Not very (%) | NaN | NaN | NaN | NaN | NaN | 32 | 30 |
| Not at all (%) | NaN | NaN | NaN | NaN | NaN | 47 | 49 |
| Refused (%) | NaN | NaN | NaN | NaN | NaN | 1 | 1 |

(Base: Americans 18+)**How much do you agree with the following statements?****I have personally experienced the effects of global warming.**

| | Nov 2008 | Jan 2010 | Jun 2010 | May 2011 | Nov 2011 | Mar 2012 | Sep 2012 | Apr 2013 |
|-----------------------|----------|----------|----------|----------|----------|----------|----------|----------|
| (Unweighted Base) | 2,164 | 1,001 | 1,024 | 1,010 | 1,000 | 1,008 | 1,061 | 1,045 |
| Strongly Agree (%) | 4 | 4 | 5 | 5 | 7 | 5 | 4 | 6 |
| Somewhat Agree (%) | 28 | 19 | 24 | 27 | 28 | 30 | 34 | 33 |
| Somewhat Disagree (%) | 42 | 32 | 34 | 32 | 34 | 30 | 30 | 29 |
| Strongly Disagree (%) | 24 | 37 | 34 | 30 | 23 | 33 | 31 | 31 |
| Refused (%) | 2 | 7 | 3 | 6 | 8 | 2 | 0 | 2 |

| | Nov 2013 | Apr 2014 | Oct 2014 | Mar 2015 | Oct 2015 | Mar 2016 | Nov 2016 | May 2017 |
|-----------------------|----------|----------|----------|----------|----------|----------|----------|----------|
| (Unweighted Base) | 830 | 1,013 | 1,275 | 1,263 | 0 | 1,204 | 1,226 | 1,266 |
| Strongly Agree (%) | 6 | 5 | 4 | 4 | NaN | 7 | 7 | 5 |
| Somewhat Agree (%) | 27 | 29 | 26 | 27 | NaN | 33 | 29 | 34 |
| Somewhat Disagree (%) | 30 | 29 | 29 | 29 | NaN | 29 | 29 | 29 |
| Strongly Disagree (%) | 36 | 35 | 41 | 40 | NaN | 31 | 35 | 31 |
| Refused (%) | 1 | 1 | 0 | 0 | NaN | 0 | 0 | 0 |

| | Oct 2017 | Mar 2018 | Dec 2018 | Apr 2019 | Nov 2019 | Apr 2020 | Dec 2020 |
|-----------------------|----------|----------|----------|----------|----------|----------|----------|
| (Unweighted Base) | 1,304 | 1,278 | 1,114 | 1,291 | 1,303 | 1,029 | 1,036 |
| Strongly Agree (%) | 8 | 5 | 11 | 6 | 10 | 9 | 12 |
| Somewhat Agree (%) | 36 | 36 | 35 | 32 | 35 | 35 | 30 |
| Somewhat Disagree (%) | 30 | 27 | 24 | 28 | 23 | 26 | 24 |
| Strongly Disagree (%) | 26 | 32 | 31 | 33 | 31 | 30 | 34 |
| Refused (%) | 0 | 0 | 0 | 0 | 0 | 0 | 0 |

(Base: Americans 18+)**When do you think global warming will start to harm people in the United States?**

| | Nov 2008 | Jan 2010 | Jun 2010 | May 2011 | Nov 2011 | Mar 2012 | Sep 2012 | Apr 2013 |
|-------------------------------|----------|----------|----------|----------|----------|----------|----------|----------|
| (Unweighted Base) | 2,164 | 1,001 | 1,024 | 1,010 | 1,000 | 1,008 | 1,061 | 1,045 |
| They are being harmed now (%) | 33 | 24 | 28 | 31 | 29 | 29 | 36 | 34 |
| In 10 years (%) | 13 | 12 | 12 | 11 | 10 | 11 | 13 | 11 |
| In 25 years (%) | 13 | 13 | 11 | 13 | 13 | 13 | 11 | 12 |
| In 50 years (%) | 13 | 12 | 13 | 12 | 15 | 14 | 12 | 12 |
| In 100 years (%) | 12 | 13 | 14 | 11 | 15 | 15 | 13 | 13 |
| Never (%) | 14 | 23 | 19 | 19 | 16 | 15 | 15 | 17 |
| Refused (%) | 3 | 2 | 3 | 2 | 3 | 2 | 1 | 1 |

| | Nov 2013 | Apr 2014 | Oct 2014 | Mar 2015 | Oct 2015 | Mar 2016 | Nov 2016 | May 2017 |
|-------------------------------|----------|----------|----------|----------|----------|----------|----------|----------|
| (Unweighted Base) | 830 | 1,013 | 1,275 | 1,263 | 1,330 | 1,204 | 1,226 | 1,266 |
| They are being harmed now (%) | 34 | 32 | 33 | 32 | 34 | 38 | 36 | 35 |
| In 10 years (%) | 10 | 9 | 10 | 10 | 13 | 12 | 14 | 11 |
| In 25 years (%) | 14 | 14 | 14 | 13 | 14 | 13 | 15 | 13 |
| In 50 years (%) | 11 | 15 | 12 | 11 | 11 | 12 | 10 | 13 |
| In 100 years (%) | 12 | 14 | 13 | 13 | 10 | 10 | 9 | 13 |
| Never (%) | 18 | 16 | 18 | 20 | 18 | 14 | 16 | 15 |
| Refused (%) | 2 | 1 | 0 | 0 | 0 | 0 | 0 | 0 |

| | Oct 2017 | Mar 2018 | Dec 2018 | Apr 2019 | Nov 2019 | Apr 2020 | Dec 2020 |
|-------------------------------|----------|----------|----------|----------|----------|----------|----------|
| (Unweighted Base) | 1,304 | 1,278 | 1,114 | 1,291 | 1,303 | 1,029 | 1,036 |
| They are being harmed now (%) | 42 | 39 | 48 | 38 | 45 | 45 | 47 |
| In 10 years (%) | 12 | 11 | 7 | 10 | 12 | 13 | 12 |
| In 25 years (%) | 12 | 12 | 14 | 13 | 12 | 12 | 10 |
| In 50 years (%) | 11 | 12 | 7 | 11 | 9 | 9 | 9 |
| In 100 years (%) | 11 | 11 | 9 | 12 | 9 | 8 | 9 |
| Never (%) | 12 | 15 | 14 | 15 | 14 | 13 | 14 |
| Refused (%) | 0 | 0 | 0 | 0 | 0 | 0 | 0 |

(Base: Americans 18+)**How much do you think global warming will harm...?****You personally**

| | Nov 2008 | Jan 2010 | Jun 2010 | May 2011 | Nov 2011 | Mar 2012 | Sep 2012 | Apr 2013 |
|---------------------|----------|----------|----------|----------|----------|----------|----------|----------|
| (Unweighted Base) | 2,164 | 1,001 | 1,024 | 1,010 | 1,000 | 1,008 | 1,061 | 1,045 |
| A great deal (%) | 9 | 13 | 10 | 11 | 9 | 11 | 16 | 15 |
| Moderate amount (%) | 22 | 23 | 21 | 18 | 20 | 18 | 26 | 25 |
| Only a little (%) | 24 | 21 | 27 | 27 | 28 | 30 | 25 | 26 |
| Not at all (%) | 22 | 30 | 24 | 25 | 24 | 29 | 20 | 23 |
| Don't know (%) | 23 | 11 | 18 | 17 | 16 | 11 | 13 | 11 |
| Refused (%) | 1 | 2 | 0 | 2 | 3 | 1 | 0 | 1 |

| | Nov 2013 | Apr 2014 | Oct 2014 | Mar 2015 | Oct 2015 | Mar 2016 | Nov 2016 | May 2017 |
|---------------------|----------|----------|----------|----------|----------|----------|----------|----------|
| (Unweighted Base) | 830 | 1,013 | 1,275 | 1,263 | 1,330 | 1,204 | 1,226 | 1,266 |
| A great deal (%) | 13 | 13 | 12 | 10 | 14 | 12 | 14 | 13 |
| Moderate amount (%) | 25 | 25 | 24 | 26 | 27 | 28 | 27 | 29 |
| Only a little (%) | 27 | 26 | 26 | 26 | 26 | 24 | 25 | 26 |
| Not at all (%) | 26 | 25 | 27 | 25 | 20 | 23 | 25 | 22 |
| Don't know (%) | 8 | 10 | 11 | 13 | 12 | 12 | 8 | 9 |
| Refused (%) | 1 | 1 | 0 | 0 | 0 | 0 | 0 | 0 |

| | Oct 2017 | Mar 2018 | Dec 2018 | Apr 2019 | Nov 2019 | Apr 2020 | Dec 2020 |
|---------------------|----------|----------|----------|----------|----------|----------|----------|
| (Unweighted Base) | 1,304 | 1,278 | 1,114 | 1,291 | 1,303 | 1,029 | 1,036 |
| A great deal (%) | 16 | 14 | 22 | 14 | 18 | 13 | 15 |
| Moderate amount (%) | 33 | 28 | 27 | 29 | 26 | 29 | 28 |
| Only a little (%) | 24 | 27 | 20 | 24 | 24 | 26 | 24 |
| Not at all (%) | 19 | 20 | 20 | 25 | 22 | 21 | 23 |
| Don't know (%) | 7 | 11 | 10 | 8 | 11 | 10 | 10 |
| Refused (%) | 0 | 0 | 0 | 0 | 0 | 0 | 0 |

(Base: Americans 18+)**How much do you think global warming will harm...? (Cont'd)****Your family**

| | Nov 2008 | Jan 2010 | Jun 2010 | May 2011 | Nov 2011 | Mar 2012 | Sep 2012 | Apr 2013 |
|---------------------|----------|----------|----------|----------|----------|----------|----------|----------|
| (Unweighted Base) | 2,164 | 1,001 | 1,024 | 1,010 | 1,000 | 1,008 | 1,061 | 1,045 |
| A great deal (%) | 11 | 15 | 11 | 12 | 10 | 12 | 18 | 17 |
| Moderate amount (%) | 24 | 25 | 25 | 21 | 23 | 21 | 28 | 27 |
| Only a little (%) | 23 | 21 | 23 | 25 | 27 | 28 | 23 | 23 |
| Not at all (%) | 18 | 27 | 21 | 23 | 21 | 26 | 17 | 20 |
| Don't know (%) | 23 | 11 | 19 | 17 | 17 | 12 | 14 | 11 |
| Refused (%) | 1 | 2 | 0 | 2 | 2 | 1 | 0 | 1 |

| | Nov 2013 | Apr 2014 | Oct 2014 | Mar 2015 | Oct 2015 | Mar 2016 | Nov 2016 | May 2017 |
|---------------------|----------|----------|----------|----------|----------|----------|----------|----------|
| (Unweighted Base) | 830 | 1,013 | 1,275 | 1,263 | 0 | 1,204 | 1,226 | 1,266 |
| A great deal (%) | 17 | 16 | 15 | 13 | NaN | 15 | 17 | 16 |
| Moderate amount (%) | 25 | 27 | 28 | 28 | NaN | 30 | 30 | 31 |
| Only a little (%) | 25 | 24 | 23 | 23 | NaN | 22 | 24 | 25 |
| Not at all (%) | 24 | 21 | 23 | 22 | NaN | 21 | 21 | 19 |
| Don't know (%) | 8 | 11 | 11 | 13 | NaN | 12 | 8 | 9 |
| Refused (%) | 1 | 1 | 0 | 0 | NaN | 0 | 0 | 0 |

| | Oct 2017 | Mar 2018 | Dec 2018 | Apr 2019 | Nov 2019 | Apr 2020 | Dec 2020 |
|---------------------|----------|----------|----------|----------|----------|----------|----------|
| (Unweighted Base) | 1,304 | 1,278 | 1,114 | 1,291 | 1,303 | 1,029 | 1,036 |
| A great deal (%) | 19 | 17 | 27 | 18 | 21 | 16 | 19 |
| Moderate amount (%) | 35 | 30 | 29 | 30 | 28 | 30 | 30 |
| Only a little (%) | 22 | 25 | 17 | 22 | 22 | 24 | 20 |
| Not at all (%) | 16 | 17 | 17 | 22 | 18 | 19 | 21 |
| Don't know (%) | 8 | 12 | 9 | 9 | 11 | 11 | 10 |
| Refused (%) | 0 | 0 | 0 | 0 | 0 | 0 | 0 |

(Base: Americans 18+)**How much do you think global warming will harm...? (Cont'd)****People in your community**

| | Nov 2008 | Jan 2010 | Jun 2010 | May 2011 | Nov 2011 | Mar 2012 | Sep 2012 | Apr 2013 |
|---------------------|----------|----------|----------|----------|----------|----------|----------|----------|
| (Unweighted Base) | 2,164 | 1,001 | 1,024 | 1,010 | 1,000 | 1,008 | 1,061 | 1,045 |
| A great deal (%) | 13 | 15 | 11 | 12 | 10 | 12 | 19 | 17 |
| Moderate amount (%) | 26 | 27 | 25 | 21 | 23 | 21 | 29 | 28 |
| Only a little (%) | 20 | 21 | 23 | 25 | 26 | 29 | 23 | 23 |
| Not at all (%) | 17 | 24 | 21 | 21 | 20 | 24 | 15 | 18 |
| Don't know (%) | 23 | 11 | 19 | 18 | 17 | 13 | 13 | 13 |
| Refused (%) | 1 | 3 | 0 | 2 | 3 | 2 | 0 | 1 |

| | Nov 2013 | Apr 2014 | Oct 2014 | Mar 2015 | Oct 2015 | Mar 2016 | Nov 2016 | May 2017 |
|---------------------|----------|----------|----------|----------|----------|----------|----------|----------|
| (Unweighted Base) | 830 | 1,013 | 1,275 | 1,263 | 0 | 1,204 | 1,226 | 1,266 |
| A great deal (%) | 14 | 16 | 16 | 14 | NaN | 15 | 19 | 16 |
| Moderate amount (%) | 29 | 28 | 27 | 29 | NaN | 31 | 30 | 32 |
| Only a little (%) | 24 | 24 | 23 | 24 | NaN | 23 | 22 | 23 |
| Not at all (%) | 23 | 20 | 22 | 20 | NaN | 19 | 20 | 18 |
| Don't know (%) | 9 | 11 | 11 | 14 | NaN | 12 | 9 | 10 |
| Refused (%) | 1 | 1 | 0 | 0 | NaN | 0 | 0 | 0 |

| | Oct 2017 | Mar 2018 | Dec 2018 | Apr 2019 | Nov 2019 | Apr 2020 | Dec 2020 |
|---------------------|----------|----------|----------|----------|----------|----------|----------|
| (Unweighted Base) | 1,304 | 1,278 | 1,114 | 1,291 | 1,303 | 1,029 | 1,036 |
| A great deal (%) | 21 | 17 | 27 | 19 | 22 | 17 | 19 |
| Moderate amount (%) | 34 | 32 | 30 | 30 | 29 | 31 | 32 |
| Only a little (%) | 22 | 22 | 16 | 22 | 20 | 23 | 19 |
| Not at all (%) | 15 | 16 | 16 | 21 | 17 | 17 | 19 |
| Don't know (%) | 8 | 12 | 10 | 8 | 11 | 11 | 10 |
| Refused (%) | 0 | 0 | 0 | 0 | 0 | 0 | 0 |

(Base: Americans 18+)**How much do you think global warming will harm...? (Cont'd)****People in the United States**

| | Nov 2008 | Jan 2010 | Jun 2010 | May 2011 | Nov 2011 | Mar 2012 | Sep 2012 | Apr 2013 |
|---------------------|----------|----------|----------|----------|----------|----------|----------|----------|
| (Unweighted Base) | 2,164 | 1,001 | 1,024 | 1,010 | 1,000 | 1,008 | 1,061 | 1,045 |
| A great deal (%) | 21 | 22 | 16 | 16 | 15 | 18 | 26 | 22 |
| Moderate amount (%) | 28 | 28 | 28 | 26 | 28 | 28 | 31 | 30 |
| Only a little (%) | 15 | 15 | 21 | 22 | 23 | 23 | 17 | 18 |
| Not at all (%) | 13 | 21 | 17 | 17 | 16 | 17 | 12 | 16 |
| Don't know (%) | 22 | 12 | 17 | 18 | 16 | 12 | 13 | 12 |
| Refused (%) | 1 | 3 | 0 | 2 | 3 | 2 | 0 | 1 |

| | Nov 2013 | Apr 2014 | Oct 2014 | Mar 2015 | Oct 2015 | Mar 2016 | Nov 2016 | May 2017 |
|---------------------|----------|----------|----------|----------|----------|----------|----------|----------|
| (Unweighted Base) | 830 | 1,013 | 1,275 | 1,263 | 1,330 | 1,204 | 1,226 | 1,266 |
| A great deal (%) | 23 | 23 | 23 | 19 | 23 | 24 | 28 | 25 |
| Moderate amount (%) | 30 | 30 | 30 | 30 | 33 | 35 | 32 | 33 |
| Only a little (%) | 19 | 18 | 20 | 20 | 18 | 16 | 17 | 19 |
| Not at all (%) | 20 | 18 | 17 | 17 | 14 | 15 | 15 | 15 |
| Don't know (%) | 7 | 10 | 11 | 14 | 12 | 10 | 8 | 9 |
| Refused (%) | 1 | 1 | 0 | 0 | 0 | 0 | 0 | 0 |

| | Oct 2017 | Mar 2018 | Dec 2018 | Apr 2019 | Nov 2019 | Apr 2020 | Dec 2020 |
|---------------------|----------|----------|----------|----------|----------|----------|----------|
| (Unweighted Base) | 1,304 | 1,278 | 1,114 | 1,291 | 1,303 | 1,029 | 1,036 |
| A great deal (%) | 34 | 28 | 38 | 30 | 35 | 29 | 32 |
| Moderate amount (%) | 33 | 30 | 27 | 28 | 30 | 33 | 30 |
| Only a little (%) | 14 | 18 | 12 | 15 | 12 | 16 | 14 |
| Not at all (%) | 11 | 12 | 13 | 17 | 13 | 12 | 13 |
| Don't know (%) | 7 | 12 | 10 | 9 | 10 | 10 | 11 |
| Refused (%) | 0 | 0 | 0 | 0 | 0 | 0 | 0 |

(Base: Americans 18+)**How much do you think global warming will harm...? (Cont'd)****People in developing countries**

| | Nov 2008 | Jan 2010 | Jun 2010 | May 2011 | Nov 2011 | Mar 2012 | Sep 2012 | Apr 2013 |
|---------------------|----------|----------|----------|----------|----------|----------|----------|----------|
| (Unweighted Base) | 2,164 | 1,001 | 1,024 | 1,010 | 1,000 | 1,008 | 1,061 | 1,045 |
| A great deal (%) | 31 | 28 | 22 | 23 | 22 | 26 | 35 | 30 |
| Moderate amount (%) | 21 | 24 | 27 | 21 | 27 | 25 | 29 | 25 |
| Only a little (%) | 10 | 14 | 17 | 19 | 17 | 18 | 10 | 18 |
| Not at all (%) | 13 | 19 | 15 | 16 | 15 | 16 | 11 | 13 |
| Don't know (%) | 24 | 13 | 18 | 18 | 17 | 14 | 15 | 13 |
| Refused (%) | 1 | 2 | 0 | 2 | 3 | 2 | 0 | 1 |

| | Nov 2013 | Apr 2014 | Oct 2014 | Mar 2015 | Oct 2015 | Mar 2016 | Nov 2016 | May 2017 |
|---------------------|----------|----------|----------|----------|----------|----------|----------|----------|
| (Unweighted Base) | 830 | 1,013 | 1,275 | 1,263 | 1,330 | 1,204 | 1,226 | 1,266 |
| A great deal (%) | 32 | 31 | 29 | 27 | 34 | 36 | 40 | 37 |
| Moderate amount (%) | 24 | 24 | 26 | 26 | 27 | 27 | 25 | 25 |
| Only a little (%) | 17 | 17 | 16 | 17 | 13 | 12 | 12 | 16 |
| Not at all (%) | 19 | 16 | 17 | 15 | 13 | 13 | 13 | 13 |
| Don't know (%) | 8 | 11 | 12 | 15 | 13 | 12 | 11 | 9 |
| Refused (%) | 1 | 1 | 0 | 0 | 0 | 0 | 0 | 0 |

| | Oct 2017 | Mar 2018 | Dec 2018 | Apr 2019 | Nov 2019 | Apr 2020 | Dec 2020 |
|---------------------|----------|----------|----------|----------|----------|----------|----------|
| (Unweighted Base) | 1,304 | 1,278 | 1,114 | 1,291 | 1,303 | 1,029 | 1,036 |
| A great deal (%) | 47 | 38 | 48 | 42 | 48 | 44 | 46 |
| Moderate amount (%) | 25 | 24 | 20 | 22 | 19 | 22 | 21 |
| Only a little (%) | 10 | 12 | 8 | 11 | 8 | 10 | 10 |
| Not at all (%) | 10 | 12 | 11 | 15 | 12 | 10 | 10 |
| Don't know (%) | 9 | 13 | 13 | 10 | 12 | 14 | 13 |
| Refused (%) | 0 | 0 | 0 | 0 | 0 | 0 | 0 |

(Base: Americans 18+)**How much do you think global warming will harm...? (Cont'd)****The world's poor**

| | Nov 2008 | Jan 2010 | Jun 2010 | May 2011 | Nov 2011 | Mar 2012 | Sep 2012 | Apr 2013 |
|---------------------|----------|----------|----------|----------|----------|----------|----------|----------|
| (Unweighted Base) | 0 | 0 | 0 | 0 | 0 | 0 | 0 | 0 |
| A great deal (%) | NaN | NaN | NaN | NaN | NaN | NaN | NaN | NaN |
| Moderate amount (%) | NaN | NaN | NaN | NaN | NaN | NaN | NaN | NaN |
| Only a little (%) | NaN | NaN | NaN | NaN | NaN | NaN | NaN | NaN |
| Not at all (%) | NaN | NaN | NaN | NaN | NaN | NaN | NaN | NaN |
| Don't know (%) | NaN | NaN | NaN | NaN | NaN | NaN | NaN | NaN |
| Refused (%) | NaN | NaN | NaN | NaN | NaN | NaN | NaN | NaN |

| | Nov 2013 | Apr 2014 | Oct 2014 | Mar 2015 | Oct 2015 | Mar 2016 | Nov 2016 | May 2017 |
|---------------------|----------|----------|----------|----------|----------|----------|----------|----------|
| (Unweighted Base) | 0 | 0 | 0 | 1,259 | 1,330 | 1,204 | 1,226 | 1,266 |
| A great deal (%) | NaN | NaN | NaN | 30 | 36 | 40 | 43 | 39 |
| Moderate amount (%) | NaN | NaN | NaN | 23 | 25 | 22 | 21 | 23 |
| Only a little (%) | NaN | NaN | NaN | 16 | 12 | 12 | 11 | 15 |
| Not at all (%) | NaN | NaN | NaN | 16 | 13 | 13 | 13 | 13 |
| Don't know (%) | NaN | NaN | NaN | 15 | 13 | 14 | 12 | 10 |
| Refused (%) | NaN | NaN | NaN | 0 | 0 | 0 | 0 | 0 |

| | Oct 2017 | Mar 2018 | Dec 2018 | Apr 2019 | Nov 2019 | Apr 2020 | Dec 2020 |
|---------------------|----------|----------|----------|----------|----------|----------|----------|
| (Unweighted Base) | 1,304 | 1,278 | 1,114 | 1,291 | 1,303 | 1,029 | 1,036 |
| A great deal (%) | 49 | 40 | 50 | 44 | 50 | 46 | 48 |
| Moderate amount (%) | 21 | 22 | 17 | 20 | 16 | 21 | 18 |
| Only a little (%) | 10 | 13 | 8 | 11 | 9 | 11 | 10 |
| Not at all (%) | 10 | 12 | 12 | 15 | 13 | 10 | 12 |
| Don't know (%) | 9 | 13 | 13 | 10 | 12 | 12 | 13 |
| Refused (%) | 0 | 0 | 0 | 0 | 0 | 0 | 0 |

(Base: Americans 18+)**How much do you think global warming will harm...? (Cont'd)****Future generations of people**

| | Nov 2008 | Jan 2010 | Jun 2010 | May 2011 | Nov 2011 | Mar 2012 | Sep 2012 | Apr 2013 |
|---------------------|----------|----------|----------|----------|----------|----------|----------|----------|
| (Unweighted Base) | 2,164 | 1,001 | 1,024 | 1,010 | 1,000 | 1,008 | 1,061 | 1,045 |
| A great deal (%) | 43 | 41 | 39 | 36 | 40 | 42 | 47 | 42 |
| Moderate amount (%) | 17 | 21 | 22 | 22 | 21 | 22 | 21 | 21 |
| Only a little (%) | 7 | 9 | 11 | 10 | 13 | 12 | 9 | 12 |
| Not at all (%) | 10 | 15 | 12 | 11 | 9 | 11 | 8 | 12 |
| Don't know (%) | 22 | 12 | 16 | 18 | 15 | 13 | 14 | 12 |
| Refused (%) | 2 | 3 | 1 | 3 | 2 | 1 | 0 | 1 |

| | Nov 2013 | Apr 2014 | Oct 2014 | Mar 2015 | Oct 2015 | Mar 2016 | Nov 2016 | May 2017 |
|---------------------|----------|----------|----------|----------|----------|----------|----------|----------|
| (Unweighted Base) | 830 | 1,013 | 1,275 | 1,263 | 1,330 | 1,204 | 1,226 | 1,266 |
| A great deal (%) | 46 | 49 | 46 | 42 | 51 | 48 | 53 | 50 |
| Moderate amount (%) | 19 | 18 | 18 | 21 | 19 | 22 | 18 | 20 |
| Only a little (%) | 11 | 10 | 11 | 10 | 8 | 8 | 9 | 10 |
| Not at all (%) | 15 | 11 | 13 | 12 | 11 | 10 | 10 | 11 |
| Don't know (%) | 9 | 11 | 13 | 15 | 11 | 11 | 10 | 8 |
| Refused (%) | 1 | 1 | 0 | 0 | 0 | 0 | 0 | 0 |

| | Oct 2017 | Mar 2018 | Dec 2018 | Apr 2019 | Nov 2019 | Apr 2020 | Dec 2020 |
|---------------------|----------|----------|----------|----------|----------|----------|----------|
| (Unweighted Base) | 1,304 | 1,278 | 1,114 | 1,291 | 1,303 | 1,029 | 1,036 |
| A great deal (%) | 54 | 52 | 59 | 52 | 57 | 53 | 55 |
| Moderate amount (%) | 21 | 18 | 16 | 17 | 15 | 20 | 17 |
| Only a little (%) | 8 | 9 | 6 | 9 | 7 | 9 | 8 |
| Not at all (%) | 9 | 9 | 9 | 13 | 10 | 7 | 8 |
| Don't know (%) | 8 | 12 | 10 | 9 | 11 | 11 | 12 |
| Refused (%) | 0 | 0 | 0 | 0 | 0 | 0 | 0 |

(Base: Americans 18+)**How much do you think global warming will harm...? (Cont'd)****Plant and animal species**

| | Nov 2008 | Jan 2010 | Jun 2010 | May 2011 | Nov 2011 | Mar 2012 | Sep 2012 | Apr 2013 |
|---------------------|----------|----------|----------|----------|----------|----------|----------|----------|
| (Unweighted Base) | 2,164 | 1,001 | 1,024 | 1,010 | 1,000 | 1,008 | 1,061 | 1,045 |
| A great deal (%) | 45 | 41 | 40 | 38 | 40 | 43 | 43 | 39 |
| Moderate amount (%) | 17 | 19 | 20 | 18 | 18 | 21 | 25 | 24 |
| Only a little (%) | 8 | 10 | 12 | 12 | 15 | 13 | 11 | 13 |
| Not at all (%) | 9 | 15 | 13 | 12 | 9 | 10 | 8 | 13 |
| Don't know (%) | 20 | 12 | 15 | 17 | 14 | 12 | 13 | 10 |
| Refused (%) | 2 | 3 | 1 | 2 | 3 | 1 | 0 | 1 |

| | Nov 2013 | Apr 2014 | Oct 2014 | Mar 2015 | Oct 2015 | Mar 2016 | Nov 2016 | May 2017 |
|---------------------|----------|----------|----------|----------|----------|----------|----------|----------|
| (Unweighted Base) | 830 | 1,013 | 1,275 | 1,263 | 0 | 1,204 | 1,226 | 1,266 |
| A great deal (%) | 46 | 47 | 44 | 42 | NaN | 48 | 50 | 49 |
| Moderate amount (%) | 19 | 19 | 20 | 21 | NaN | 23 | 19 | 22 |
| Only a little (%) | 11 | 12 | 10 | 12 | NaN | 9 | 10 | 10 |
| Not at all (%) | 15 | 12 | 13 | 12 | NaN | 11 | 11 | 11 |
| Don't know (%) | 7 | 10 | 12 | 13 | NaN | 10 | 9 | 8 |
| Refused (%) | 1 | 1 | 0 | 0 | NaN | 0 | 0 | 0 |

| | Oct 2017 | Mar 2018 | Dec 2018 | Apr 2019 | Nov 2019 | Apr 2020 | Dec 2020 |
|---------------------|----------|----------|----------|----------|----------|----------|----------|
| (Unweighted Base) | 1,304 | 1,278 | 1,114 | 1,291 | 1,303 | 1,029 | 1,036 |
| A great deal (%) | 54 | 53 | 58 | 52 | 57 | 54 | 55 |
| Moderate amount (%) | 21 | 18 | 16 | 19 | 16 | 19 | 18 |
| Only a little (%) | 9 | 9 | 8 | 10 | 7 | 9 | 9 |
| Not at all (%) | 8 | 9 | 9 | 11 | 10 | 8 | 8 |
| Don't know (%) | 7 | 10 | 9 | 8 | 10 | 10 | 10 |
| Refused (%) | 0 | 0 | 0 | 0 | 0 | 0 | 0 |

(Base: Americans 18+)**How often do you discuss global warming with your family and friends?**

| | Nov 2008 | Jan 2010 | Jun 2010 | May 2011 | Nov 2011 | Mar 2012 | Sep 2012 | Apr 2013 |
|-------------------|----------|----------|----------|----------|----------|----------|----------|----------|
| (Unweighted Base) | 2,164 | 1,001 | 1,024 | 1,010 | 1,000 | 1,008 | 1,061 | 1,045 |
| Often (%) | 5 | 6 | 5 | 4 | 4 | 5 | 3 | 4 |
| Occasionally (%) | 35 | 29 | 30 | 26 | 26 | 24 | 26 | 28 |
| Rarely (%) | 33 | 34 | 39 | 41 | 39 | 40 | 38 | 39 |
| Never (%) | 26 | 30 | 25 | 28 | 29 | 30 | 34 | 28 |
| Refused (%) | 1 | 2 | 0 | 1 | 2 | 1 | 0 | 0 |

| | Nov 2013 | Apr 2014 | Oct 2014 | Mar 2015 | Oct 2015 | Mar 2016 | Nov 2016 | May 2017 |
|-------------------|----------|----------|----------|----------|----------|----------|----------|----------|
| (Unweighted Base) | 830 | 1,013 | 1,275 | 1,263 | 1,330 | 1,204 | 1,226 | 1,266 |
| Often (%) | 3 | 4 | 3 | 3 | 5 | 4 | 6 | 5 |
| Occasionally (%) | 23 | 28 | 24 | 23 | 29 | 27 | 27 | 28 |
| Rarely (%) | 38 | 39 | 36 | 38 | 33 | 36 | 36 | 36 |
| Never (%) | 34 | 29 | 37 | 36 | 32 | 32 | 31 | 31 |
| Refused (%) | 1 | 0 | 0 | 0 | 0 | 0 | 0 | 0 |

| | Oct 2017 | Mar 2018 | Dec 2018 | Apr 2019 | Nov 2019 | Apr 2020 | Dec 2020 |
|-------------------|----------|----------|----------|----------|----------|----------|----------|
| (Unweighted Base) | 1,304 | 1,278 | 1,114 | 1,291 | 1,303 | 1,029 | 1,036 |
| Often (%) | 6 | 5 | 8 | 6 | 9 | 5 | 6 |
| Occasionally (%) | 32 | 30 | 34 | 31 | 32 | 31 | 32 |
| Rarely (%) | 37 | 34 | 33 | 33 | 32 | 38 | 31 |
| Never (%) | 25 | 31 | 26 | 30 | 27 | 26 | 32 |
| Refused (%) | 0 | 0 | 0 | 0 | 0 | 0 | 0 |

(Base: Americans 18+)**About how often do you hear about global warming in the media (TV, movies, radio, newspapers/news websites, magazines, etc.)?**

| | Mar 2015 | Oct 2015 | Mar 2016 | Nov 2016 | May 2017 | Oct 2017 | Mar 2018 |
|-------------------------------|----------|----------|----------|----------|----------|----------|----------|
| (Unweighted Base) | 1,263 | 1,330 | 1,204 | 0 | 1,266 | 1,304 | 1,278 |
| At least once a week (%) | 19 | 25 | 22 | NaN | 23 | 24 | 20 |
| At least once a month (%) | 21 | 23 | 22 | NaN | 20 | 28 | 23 |
| Several times a year (%) | 30 | 26 | 26 | NaN | 26 | 25 | 28 |
| Once a year or less often (%) | 8 | 8 | 8 | NaN | 9 | 7 | 9 |
| Never (%) | 6 | 6 | 7 | NaN | 9 | 3 | 7 |
| Not sure (%) | 15 | 11 | 15 | NaN | 11 | 13 | 12 |
| Refused (%) | 0 | 1 | 0 | NaN | 1 | 1 | 1 |

| | Dec 2018 | Apr 2019 | Nov 2019 | Apr 2020 | Dec 2020 |
|-------------------------------|----------|----------|----------|----------|----------|
| (Unweighted Base) | 1,114 | 1,291 | 1,303 | 1,029 | 1,036 |
| At least once a week (%) | 34 | 31 | 35 | 24 | 27 |
| At least once a month (%) | 22 | 20 | 21 | 24 | 23 |
| Several times a year (%) | 22 | 21 | 19 | 24 | 24 |
| Once a year or less often (%) | 5 | 6 | 6 | 8 | 7 |
| Never (%) | 6 | 8 | 6 | 8 | 7 |
| Not sure (%) | 8 | 13 | 13 | 12 | 10 |
| Refused (%) | 2 | 1 | 1 | 1 | 1 |

(Base: Americans 18+)**About how often do you hear people you know (your family, friends, co-workers, etc.) talk about global warming?**

| | Mar 2015 | Oct 2015 | Mar 2016 | Nov 2016 | May 2017 | Oct 2017 | Mar 2018 |
|-------------------------------|----------|----------|----------|----------|----------|----------|----------|
| (Unweighted Base) | 1,263 | 1,330 | 1,204 | 0 | 1,266 | 1,304 | 1,278 |
| At least once a week (%) | 4 | 6 | 5 | NaN | 6 | 7 | 5 |
| At least once a month (%) | 12 | 15 | 13 | NaN | 13 | 17 | 15 |
| Several times a year (%) | 23 | 22 | 25 | NaN | 21 | 24 | 24 |
| Once a year or less often (%) | 21 | 22 | 19 | NaN | 22 | 21 | 20 |
| Never (%) | 25 | 26 | 24 | NaN | 28 | 18 | 22 |
| Not sure (%) | 14 | 9 | 13 | NaN | 10 | 12 | 13 |
| Refused (%) | 0 | 1 | 1 | NaN | 1 | 1 | 1 |

| | Dec 2018 | Apr 2019 | Nov 2019 | Apr 2020 | Dec 2020 |
|-------------------------------|----------|----------|----------|----------|----------|
| (Unweighted Base) | 1,114 | 1,291 | 1,303 | 1,029 | 1,036 |
| At least once a week (%) | 9 | 8 | 8 | 6 | 5 |
| At least once a month (%) | 17 | 15 | 16 | 16 | 16 |
| Several times a year (%) | 24 | 23 | 23 | 24 | 23 |
| Once a year or less often (%) | 19 | 16 | 15 | 23 | 21 |
| Never (%) | 22 | 24 | 25 | 24 | 28 |
| Not sure (%) | 7 | 12 | 12 | 8 | 7 |
| Refused (%) | 1 | 1 | 1 | 1 | 0 |

(Base: Americans 18+)**How important is the issue of global warming to you personally?**

| | Nov 2008 | Jan 2010 | Jun 2010 | May 2011 | Nov 2011 | Mar 2012 | Sep 2012 | Apr 2013 |
|--------------------------|----------|----------|----------|----------|----------|----------|----------|----------|
| (Unweighted Base) | 2,164 | 1,001 | 1,024 | 1,010 | 1,000 | 1,008 | 1,061 | 1,045 |
| Extremely important (%) | 10 | 5 | 6 | 7 | 6 | 6 | 6 | 8 |
| Very important (%) | 20 | 14 | 18 | 15 | 13 | 14 | 17 | 13 |
| Somewhat important (%) | 39 | 37 | 38 | 37 | 40 | 40 | 36 | 36 |
| Not too important (%) | 18 | 23 | 24 | 24 | 24 | 23 | 24 | 24 |
| Not at all important (%) | 11 | 19 | 14 | 14 | 15 | 16 | 17 | 18 |
| Refused (%) | 1 | 2 | 0 | 2 | 2 | 2 | 0 | 0 |

| | Nov 2013 | Apr 2014 | Oct 2014 | Mar 2015 | Oct 2015 | Mar 2016 | Nov 2016 | May 2017 |
|--------------------------|----------|----------|----------|----------|----------|----------|----------|----------|
| (Unweighted Base) | 830 | 1,013 | 1,275 | 1,263 | 1,330 | 1,204 | 1,226 | 1,266 |
| Extremely important (%) | 8 | 8 | 5 | 6 | 7 | 9 | 10 | 10 |
| Very important (%) | 14 | 17 | 16 | 15 | 18 | 17 | 17 | 16 |
| Somewhat important (%) | 33 | 38 | 37 | 35 | 37 | 35 | 34 | 38 |
| Not too important (%) | 25 | 21 | 24 | 24 | 21 | 21 | 22 | 22 |
| Not at all important (%) | 18 | 16 | 18 | 20 | 17 | 17 | 16 | 15 |
| Refused (%) | 1 | 0 | 0 | 0 | 0 | 0 | 0 | 0 |

| | Oct 2017 | Mar 2018 | Dec 2018 | Apr 2019 | Nov 2019 | Apr 2020 | Dec 2020 |
|--------------------------|----------|----------|----------|----------|----------|----------|----------|
| (Unweighted Base) | 1,304 | 1,278 | 1,114 | 1,291 | 1,303 | 1,029 | 1,036 |
| Extremely important (%) | 12 | 10 | 16 | 12 | 18 | 13 | 13 |
| Very important (%) | 19 | 18 | 24 | 18 | 24 | 24 | 24 |
| Somewhat important (%) | 37 | 35 | 32 | 33 | 26 | 29 | 30 |
| Not too important (%) | 19 | 22 | 15 | 19 | 18 | 20 | 17 |
| Not at all important (%) | 14 | 15 | 14 | 17 | 16 | 13 | 16 |
| Refused (%) | 0 | 0 | 0 | 0 | 0 | 0 | 0 |

(Base: Americans 18+)**How important is it to your family and friends that you take action to reduce global warming?**

| | May 2017 | Oct 2017 | Mar 2018 | Dec 2018 | Apr 2019 | Nov 2019 | Apr 2020 | Dec 2020 |
|--------------------------|----------|----------|----------|----------|----------|----------|----------|----------|
| (Unweighted Base) | 1,266 | 0 | 0 | 1,114 | 1,291 | 1,303 | 1,029 | 1,036 |
| Extremely important (%) | 5 | NaN | NaN | 6 | 5 | 6 | 5 | 6 |
| Very important (%) | 13 | NaN | NaN | 13 | 14 | 11 | 12 | 12 |
| Somewhat important (%) | 27 | NaN | NaN | 27 | 26 | 26 | 30 | 27 |
| Not too important (%) | 23 | NaN | NaN | 19 | 17 | 20 | 20 | 21 |
| Not at all important (%) | 20 | NaN | NaN | 18 | 19 | 19 | 17 | 21 |
| Don't know (%) | 11 | NaN | NaN | 16 | 17 | 17 | 15 | 12 |
| Refused (%) | 0 | NaN | NaN | 1 | 2 | 1 | 0 | 0 |

(Base: Americans 18+)**How much of an effort do your family and friends make to reduce global warming?**

| | May 2017 | Oct 2017 | Mar 2018 | Dec 2018 | Apr 2019 | Nov 2019 | Apr 2020 | Dec 2020 |
|---------------------------------|----------|----------|----------|----------|----------|----------|----------|----------|
| (Unweighted Base) | 1,266 | 0 | 0 | 1,114 | 1,291 | 1,303 | 1,029 | 1,036 |
| A great deal of effort (%) | 3 | NaN | NaN | 4 | 3 | 3 | 2 | 3 |
| A lot of effort (%) | 8 | NaN | NaN | 7 | 8 | 7 | 6 | 7 |
| A moderate amount of effort (%) | 31 | NaN | NaN | 29 | 30 | 30 | 37 | 26 |
| A little effort (%) | 29 | NaN | NaN | 29 | 24 | 28 | 29 | 31 |
| No effort (%) | 19 | NaN | NaN | 16 | 19 | 16 | 12 | 19 |
| Don't know (%) | 10 | NaN | NaN | 14 | 15 | 15 | 14 | 13 |
| Refused (%) | 0 | NaN | NaN | 1 | 1 | 1 | 0 | 0 |

(Base: Americans 18+)

Please indicate how strongly you agree or disagree with the following statement:

I feel a personal sense of responsibility to help reduce global warming

| | May 2017 | Oct 2017 | Mar 2018 | Dec 2018 | Apr 2019 | Nov 2019 | Apr 2020 | Dec 2020 |
|-----------------------|----------|----------|----------|----------|----------|----------|----------|----------|
| (Unweighted Base) | 0 | 0 | 0 | 0 | 0 | 0 | 1,029 | 1,036 |
| Strongly agree (%) | NaN | NaN | NaN | NaN | NaN | NaN | 22 | 22 |
| Somewhat agree (%) | NaN | NaN | NaN | NaN | NaN | NaN | 44 | 42 |
| Somewhat disagree (%) | NaN | NaN | NaN | NaN | NaN | NaN | 18 | 17 |
| Strongly disagree (%) | NaN | NaN | NaN | NaN | NaN | NaN | 16 | 19 |
| Refused (%) | NaN | NaN | NaN | NaN | NaN | NaN | 0 | 0 |

(Base: Americans 18+)**Please indicate how strongly you agree or disagree with the following statement:****It's already too late to do anything about global warming**

| | Nov 2013 | Apr 2014 | Oct 2014 | Mar 2015 | Oct 2015 | Mar 2016 | Nov 2016 | May 2017 |
|--------------------------|----------|----------|----------|----------|----------|----------|----------|----------|
| (Unweighted Base) | 726 | 0 | 0 | 0 | 0 | 0 | 0 | 0 |
| Strongly disagree (%) | 30 | NaN | NaN | NaN | NaN | NaN | NaN | NaN |
| Somewhat disagree (%) | 32 | NaN | NaN | NaN | NaN | NaN | NaN | NaN |
| Somewhat agree (%) | 12 | NaN | NaN | NaN | NaN | NaN | NaN | NaN |
| Strongly agree (%) | 2 | NaN | NaN | NaN | NaN | NaN | NaN | NaN |
| Don't know (%) | 17 | NaN | NaN | NaN | NaN | NaN | NaN | NaN |
| Prefer not to answer (%) | 3 | NaN | NaN | NaN | NaN | NaN | NaN | NaN |
| Refused (%) | 3 | NaN | NaN | NaN | NaN | NaN | NaN | NaN |

| | Oct 2017 | Mar 2018 | Dec 2018 | Apr 2019 | Nov 2019 | Apr 2020 | Dec 2020 |
|--------------------------|----------|----------|----------|----------|----------|----------|----------|
| (Unweighted Base) | 0 | 0 | 1,114 | 1,291 | 1,303 | 1,029 | 1,036 |
| Strongly disagree (%) | NaN | NaN | 38 | 39 | 38 | 44 | 44 |
| Somewhat disagree (%) | NaN | NaN | 28 | 25 | 28 | 24 | 24 |
| Somewhat agree (%) | NaN | NaN | 12 | 9 | 9 | 9 | 11 |
| Strongly agree (%) | NaN | NaN | 2 | 3 | 3 | 2 | 3 |
| Don't know (%) | NaN | NaN | 15 | 17 | 16 | 14 | 15 |
| Prefer not to answer (%) | NaN | NaN | 4 | 5 | 5 | 6 | 3 |
| Refused (%) | NaN | NaN | 1 | 1 | 1 | 0 | 0 |

(Base: Americans 18+)**In your opinion, do you think global warming is a(n)...****Environmental Issue**

| | Mar 2015 | Oct 2015 | Mar 2016 | Nov 2016 | May 2017 | Oct 2017 | Mar 2018 |
|-------------------|----------|----------|----------|----------|----------|----------|----------|
| (Unweighted Base) | 1,263 | 1,330 | 1,204 | 1,226 | 0 | 1,304 | 1,278 |
| Yes (%) | 76 | 77 | 78 | 76 | NaN | 78 | 74 |
| No (%) | 11 | 11 | 10 | 11 | NaN | 11 | 11 |
| Not sure (%) | 12 | 11 | 12 | 11 | NaN | 10 | 14 |
| Refused (%) | 1 | 1 | 1 | 1 | NaN | 2 | 2 |

| | Dec 2018 | Apr 2019 | Nov 2019 | Apr 2020 | Dec 2020 |
|-------------------|----------|----------|----------|----------|----------|
| (Unweighted Base) | 0 | 1,291 | 0 | 1,029 | 1,036 |
| Yes (%) | NaN | 75 | NaN | 82 | 80 |
| No (%) | NaN | 13 | NaN | 9 | 13 |
| Not sure (%) | NaN | 11 | NaN | 8 | 6 |
| Refused (%) | NaN | 1 | NaN | 1 | 1 |

(Base: Americans 18+)**In your opinion, do you think global warming is a(n)...(Cont'd)****Scientific Issue**

| | Mar 2015 | Oct 2015 | Mar 2016 | Nov 2016 | May 2017 | Oct 2017 | Mar 2018 |
|-------------------|----------|----------|----------|----------|----------|----------|----------|
| (Unweighted Base) | 1,263 | 1,330 | 1,204 | 1,226 | 0 | 1,304 | 1,278 |
| Yes (%) | 71 | 73 | 71 | 70 | NaN | 71 | 68 |
| No (%) | 13 | 13 | 14 | 15 | NaN | 15 | 14 |
| Not sure (%) | 15 | 14 | 14 | 14 | NaN | 13 | 16 |
| Refused (%) | 2 | 1 | 1 | 1 | NaN | 2 | 2 |

| | Dec 2018 | Apr 2019 | Nov 2019 | Apr 2020 | Dec 2020 |
|-------------------|----------|----------|----------|----------|----------|
| (Unweighted Base) | 0 | 1,291 | 0 | 1,029 | 1,036 |
| Yes (%) | NaN | 69 | NaN | 74 | 73 |
| No (%) | NaN | 17 | NaN | 14 | 18 |
| Not sure (%) | NaN | 13 | NaN | 11 | 9 |
| Refused (%) | NaN | 1 | NaN | 1 | 1 |

(Base: Americans 18+)**In your opinion, do you think global warming is a(n)...(Cont'd)****Agricultural (Farming, Food) Issue**

| | Mar 2015 | Oct 2015 | Mar 2016 | Nov 2016 | May 2017 | Oct 2017 | Mar 2018 |
|-------------------|----------|----------|----------|----------|----------|----------|----------|
| (Unweighted Base) | 1,263 | 1,330 | 1,204 | 1,226 | 0 | 1,304 | 1,278 |
| Yes (%) | 64 | 65 | 62 | 65 | NaN | 66 | 62 |
| No (%) | 19 | 17 | 22 | 20 | NaN | 19 | 19 |
| Not sure (%) | 16 | 16 | 15 | 15 | NaN | 14 | 16 |
| Refused (%) | 2 | 1 | 1 | 1 | NaN | 1 | 2 |

| | Dec 2018 | Apr 2019 | Nov 2019 | Apr 2020 | Dec 2020 |
|-------------------|----------|----------|----------|----------|----------|
| (Unweighted Base) | 0 | 1,291 | 0 | 1,029 | 1,036 |
| Yes (%) | NaN | 63 | NaN | 67 | 68 |
| No (%) | NaN | 22 | NaN | 19 | 22 |
| Not sure (%) | NaN | 14 | NaN | 13 | 9 |
| Refused (%) | NaN | 1 | NaN | 0 | 0 |

(Base: Americans 18+)**In your opinion, do you think global warming is a(n)...(Cont'd)****Severe Weather Issue**

| | Mar 2015 | Oct 2015 | Mar 2016 | Nov 2016 | May 2017 | Oct 2017 | Mar 2018 |
|-------------------|----------|----------|----------|----------|----------|----------|----------|
| (Unweighted Base) | 0 | 0 | 1,204 | 1,226 | 0 | 1,304 | 1,278 |
| Yes (%) | NaN | NaN | 63 | 61 | NaN | 65 | 61 |
| No (%) | NaN | NaN | 19 | 23 | NaN | 19 | 19 |
| Not sure (%) | NaN | NaN | 17 | 15 | NaN | 15 | 17 |
| Refused (%) | NaN | NaN | 1 | 1 | NaN | 1 | 2 |

| | Dec 2018 | Apr 2019 | Nov 2019 | Apr 2020 | Dec 2020 |
|-------------------|----------|----------|----------|----------|----------|
| (Unweighted Base) | 0 | 1,291 | 0 | 1,029 | 1,036 |
| Yes (%) | NaN | 64 | NaN | 64 | 66 |
| No (%) | NaN | 21 | NaN | 22 | 23 |
| Not sure (%) | NaN | 13 | NaN | 13 | 11 |
| Refused (%) | NaN | 1 | NaN | 0 | 0 |

(Base: Americans 18+)**In your opinion, do you think global warming is a(n)...(Cont'd)****Economic Issue**

| | Mar 2015 | Oct 2015 | Mar 2016 | Nov 2016 | May 2017 | Oct 2017 | Mar 2018 |
|-------------------|----------|----------|----------|----------|----------|----------|----------|
| (Unweighted Base) | 1,263 | 1,330 | 1,204 | 1,226 | 0 | 1,304 | 1,278 |
| Yes (%) | 60 | 63 | 61 | 60 | NaN | 60 | 57 |
| No (%) | 22 | 19 | 23 | 23 | NaN | 23 | 22 |
| Not sure (%) | 16 | 17 | 15 | 16 | NaN | 15 | 19 |
| Refused (%) | 2 | 1 | 1 | 1 | NaN | 2 | 2 |

| | Dec 2018 | Apr 2019 | Nov 2019 | Apr 2020 | Dec 2020 |
|-------------------|----------|----------|----------|----------|----------|
| (Unweighted Base) | 0 | 1,291 | 0 | 1,029 | 1,036 |
| Yes (%) | NaN | 54 | NaN | 64 | 66 |
| No (%) | NaN | 29 | NaN | 22 | 23 |
| Not sure (%) | NaN | 15 | NaN | 14 | 11 |
| Refused (%) | NaN | 1 | NaN | 1 | 0 |

(Base: Americans 18+)**In your opinion, do you think global warming is a(n)...(Cont'd)****Humanitarian Issue**

| | Mar 2015 | Oct 2015 | Mar 2016 | Nov 2016 | May 2017 | Oct 2017 | Mar 2018 |
|-------------------|----------|----------|----------|----------|----------|----------|----------|
| (Unweighted Base) | 0 | 0 | 0 | 0 | 0 | 0 | 0 |
| Yes (%) | NaN | NaN | NaN | NaN | NaN | NaN | NaN |
| No (%) | NaN | NaN | NaN | NaN | NaN | NaN | NaN |
| Not sure (%) | NaN | NaN | NaN | NaN | NaN | NaN | NaN |
| Refused (%) | NaN | NaN | NaN | NaN | NaN | NaN | NaN |

| | Dec 2018 | Apr 2019 | Nov 2019 | Apr 2020 | Dec 2020 |
|-------------------|----------|----------|----------|----------|----------|
| (Unweighted Base) | 0 | 1,291 | 0 | 1,029 | 1,036 |
| Yes (%) | NaN | 51 | NaN | 61 | 58 |
| No (%) | NaN | 33 | NaN | 24 | 29 |
| Not sure (%) | NaN | 15 | NaN | 15 | 13 |
| Refused (%) | NaN | 1 | NaN | 1 | 0 |

(Base: Americans 18+)**In your opinion, do you think global warming is a(n)...(Cont'd)****Health Issue**

| | Mar 2015 | Oct 2015 | Mar 2016 | Nov 2016 | May 2017 | Oct 2017 | Mar 2018 |
|-------------------|----------|----------|----------|----------|----------|----------|----------|
| (Unweighted Base) | 1,263 | 1,330 | 1,204 | 1,226 | 0 | 1,304 | 1,278 |
| Yes (%) | 58 | 62 | 61 | 62 | NaN | 62 | 60 |
| No (%) | 23 | 21 | 22 | 22 | NaN | 23 | 21 |
| Not sure (%) | 17 | 16 | 16 | 15 | NaN | 13 | 17 |
| Refused (%) | 2 | 1 | 1 | 1 | NaN | 2 | 2 |

| | Dec 2018 | Apr 2019 | Nov 2019 | Apr 2020 | Dec 2020 |
|-------------------|----------|----------|----------|----------|----------|
| (Unweighted Base) | 0 | 1,291 | 0 | 1,029 | 1,036 |
| Yes (%) | NaN | 58 | NaN | 60 | 62 |
| No (%) | NaN | 27 | NaN | 25 | 25 |
| Not sure (%) | NaN | 14 | NaN | 14 | 11 |
| Refused (%) | NaN | 1 | NaN | 1 | 1 |

(Base: Americans 18+)**In your opinion, do you think global warming is a(n)...(Cont'd)****Political Issue**

| | Mar 2015 | Oct 2015 | Mar 2016 | Nov 2016 | May 2017 | Oct 2017 | Mar 2018 |
|-------------------|----------|----------|----------|----------|----------|----------|----------|
| (Unweighted Base) | 1,263 | 1,330 | 1,204 | 1,226 | 0 | 1,304 | 1,278 |
| Yes (%) | 54 | 56 | 56 | 56 | NaN | 60 | 58 |
| No (%) | 27 | 26 | 27 | 28 | NaN | 24 | 23 |
| Not sure (%) | 17 | 17 | 16 | 15 | NaN | 14 | 17 |
| Refused (%) | 2 | 1 | 1 | 1 | NaN | 2 | 2 |

| | Dec 2018 | Apr 2019 | Nov 2019 | Apr 2020 | Dec 2020 |
|-------------------|----------|----------|----------|----------|----------|
| (Unweighted Base) | 0 | 1,291 | 0 | 1,029 | 1,036 |
| Yes (%) | NaN | 57 | NaN | 60 | 61 |
| No (%) | NaN | 28 | NaN | 27 | 28 |
| Not sure (%) | NaN | 14 | NaN | 13 | 11 |
| Refused (%) | NaN | 1 | NaN | 0 | 0 |

(Base: Americans 18+)**In your opinion, do you think global warming is a(n)...(Cont'd)****Moral Issue**

| | Mar 2015 | Oct 2015 | Mar 2016 | Nov 2016 | May 2017 | Oct 2017 | Mar 2018 |
|-------------------|----------|----------|----------|----------|----------|----------|----------|
| (Unweighted Base) | 1,263 | 1,330 | 1,204 | 1,226 | 0 | 1,304 | 1,278 |
| Yes (%) | 35 | 41 | 39 | 37 | NaN | 41 | 41 |
| No (%) | 44 | 39 | 41 | 45 | NaN | 42 | 36 |
| Not sure (%) | 19 | 19 | 19 | 17 | NaN | 15 | 20 |
| Refused (%) | 2 | 1 | 1 | 1 | NaN | 2 | 2 |

| | Dec 2018 | Apr 2019 | Nov 2019 | Apr 2020 | Dec 2020 |
|-------------------|----------|----------|----------|----------|----------|
| (Unweighted Base) | 0 | 1,291 | 0 | 1,029 | 1,036 |
| Yes (%) | NaN | 38 | NaN | 50 | 47 |
| No (%) | NaN | 44 | NaN | 33 | 38 |
| Not sure (%) | NaN | 17 | NaN | 16 | 14 |
| Refused (%) | NaN | 1 | NaN | 1 | 0 |

(Base: Americans 18+)**In your opinion, do you think global warming is a(n)...(Cont'd)****Poverty Issue**

| | Mar 2015 | Oct 2015 | Mar 2016 | Nov 2016 | May 2017 | Oct 2017 | Mar 2018 |
|-------------------|----------|----------|----------|----------|----------|----------|----------|
| (Unweighted Base) | 1,263 | 1,330 | 1,204 | 1,226 | 0 | 1,304 | 1,278 |
| Yes (%) | 24 | 25 | 27 | 25 | NaN | 28 | 28 |
| No (%) | 53 | 50 | 51 | 54 | NaN | 52 | 47 |
| Not sure (%) | 21 | 24 | 22 | 20 | NaN | 18 | 23 |
| Refused (%) | 2 | 1 | 1 | 1 | NaN | 2 | 2 |

| | Dec 2018 | Apr 2019 | Nov 2019 | Apr 2020 | Dec 2020 |
|-------------------|----------|----------|----------|----------|----------|
| (Unweighted Base) | 0 | 1,291 | 0 | 1,029 | 1,036 |
| Yes (%) | NaN | 29 | NaN | 32 | 34 |
| No (%) | NaN | 54 | NaN | 50 | 51 |
| Not sure (%) | NaN | 16 | NaN | 17 | 15 |
| Refused (%) | NaN | 1 | NaN | 1 | 0 |

(Base: Americans 18+)**In your opinion, do you think global warming is a(n)...(Cont'd)****National Security Issue**

| | Mar 2015 | Oct 2015 | Mar 2016 | Nov 2016 | May 2017 | Oct 2017 | Mar 2018 |
|-------------------|----------|----------|----------|----------|----------|----------|----------|
| (Unweighted Base) | 1,263 | 1,330 | 1,204 | 1,226 | 0 | 1,304 | 1,278 |
| Yes (%) | 26 | 23 | 26 | 27 | NaN | 29 | 25 |
| No (%) | 53 | 50 | 51 | 53 | NaN | 50 | 49 |
| Not sure (%) | 20 | 26 | 21 | 19 | NaN | 19 | 24 |
| Refused (%) | 1 | 1 | 1 | 1 | NaN | 2 | 2 |

| | Dec 2018 | Apr 2019 | Nov 2019 | Apr 2020 | Dec 2020 |
|-------------------|----------|----------|----------|----------|----------|
| (Unweighted Base) | 0 | 1,291 | 0 | 1,029 | 1,036 |
| Yes (%) | NaN | 27 | NaN | 31 | 35 |
| No (%) | NaN | 55 | NaN | 49 | 50 |
| Not sure (%) | NaN | 17 | NaN | 19 | 14 |
| Refused (%) | NaN | 1 | NaN | 1 | 1 |

(Base: Americans 18+)**In your opinion, do you think global warming is a(n)...(Cont'd)****Social Justice (Fairness) Issue**

| | Mar 2015 | Oct 2015 | Mar 2016 | Nov 2016 | May 2017 | Oct 2017 | Mar 2018 |
|-------------------|----------|----------|----------|----------|----------|----------|----------|
| (Unweighted Base) | 1,263 | 1,330 | 1,204 | 1,226 | 0 | 1,304 | 1,278 |
| Yes (%) | 23 | 27 | 23 | 24 | NaN | 26 | 29 |
| No (%) | 53 | 46 | 51 | 52 | NaN | 51 | 46 |
| Not sure (%) | 22 | 25 | 25 | 22 | NaN | 20 | 24 |
| Refused (%) | 2 | 1 | 1 | 1 | NaN | 2 | 2 |

| | Dec 2018 | Apr 2019 | Nov 2019 | Apr 2020 | Dec 2020 |
|-------------------|----------|----------|----------|----------|----------|
| (Unweighted Base) | 0 | 1,291 | 0 | 1,029 | 1,036 |
| Yes (%) | NaN | 24 | NaN | 29 | 33 |
| No (%) | NaN | 56 | NaN | 48 | 51 |
| Not sure (%) | NaN | 19 | NaN | 22 | 16 |
| Refused (%) | NaN | 1 | NaN | 1 | 1 |

(Base: Americans 18+)**In your opinion, do you think global warming is a(n)...(Cont'd)****Religious Issue**

| | Mar 2015 | Oct 2015 | Mar 2016 | Nov 2016 | May 2017 | Oct 2017 | Mar 2018 |
|-------------------|----------|----------|----------|----------|----------|----------|----------|
| (Unweighted Base) | 1,263 | 1,330 | 1,204 | 1,226 | 0 | 1,304 | 1,278 |
| Yes (%) | 10 | 12 | 10 | 8 | NaN | 9 | 13 |
| No (%) | 71 | 67 | 71 | 73 | NaN | 77 | 64 |
| Not sure (%) | 18 | 20 | 17 | 17 | NaN | 12 | 20 |
| Refused (%) | 2 | 1 | 1 | 1 | NaN | 2 | 3 |

| | Dec 2018 | Apr 2019 | Nov 2019 | Apr 2020 | Dec 2020 |
|-------------------|----------|----------|----------|----------|----------|
| (Unweighted Base) | 0 | 1,291 | 0 | 1,029 | 1,036 |
| Yes (%) | NaN | 9 | NaN | 9 | 10 |
| No (%) | NaN | 75 | NaN | 77 | 79 |
| Not sure (%) | NaN | 15 | NaN | 14 | 10 |
| Refused (%) | NaN | 1 | NaN | 0 | 1 |

(Base: Americans 18+)**Which statement best reflects your view?****[(a) Global warming is affecting weather in the U.S.; (b) Global warming is not affecting weather in the U.S.; (c) Global warming isn't happening; (d) Don't know; (e) Prefer not to answer]****[For those who respond "global warming is affecting weather in the United States"]****How much do you think global warming is affecting weather in the United States?**

| | Apr 2013 | Nov 2013 | Apr 2014 | Oct 2014 | Mar 2015 | Oct 2015 | Mar 2016 | Nov 2016 |
|--|----------|----------|----------|----------|----------|----------|----------|----------|
| (Unweighted Base) | 510 | 406 | 1,013 | 0 | 0 | 0 | 1,204 | 1,226 |
| Global warming is affecting weather in the United States (%) | 58 | 56 | 57 | NaN | NaN | NaN | 60 | 59 |
| <i>Affecting weather a lot (%)</i> | 23 | 22 | 22 | NaN | NaN | NaN | 24 | 24 |
| <i>Affecting weather some (%)</i> | 27 | 26 | 25 | NaN | NaN | NaN | 28 | 26 |
| <i>Affecting weather a little (%)</i> | 6 | 6 | 8 | NaN | NaN | NaN | 7 | 8 |
| <i>Don't know/refused (%)</i> | 2 | 2 | 2 | NaN | NaN | NaN | 1 | 2 |
| <i>Prefer not to answer (%)</i> | 0 | 0 | 0 | NaN | NaN | NaN | 0 | 0 |
| Global warming is not affecting weather in the United States (%) | 7 | 7 | 8 | NaN | NaN | NaN | 5 | 7 |
| Global warming isn't happening (%) | 10 | 13 | 10 | NaN | NaN | NaN | 9 | 9 |
| Don't know (%) | 19 | 17 | 19 | NaN | NaN | NaN | 20 | 21 |
| Prefer not to answer/refused (%) | 6 | 7 | 6 | NaN | NaN | NaN | 6 | 4 |

| | May 2017 | Oct 2017 | Mar 2018 | Dec 2018 | Apr 2019 | Nov 2019 | Apr 2020 | Dec 2020 |
|--|----------|----------|----------|----------|----------|----------|----------|----------|
| (Unweighted Base) | 1,266 | 1,304 | 1,278 | 1,114 | 1,291 | 1,303 | 1,029 | 1,036 |
| Global warming is affecting weather in the United States (%) | 59 | 64 | 61 | 65 | 60 | 64 | 66 | 63 |
| <i>Affecting weather a lot (%)</i> | 25 | 33 | 29 | 32 | 28 | 31 | 33 | 35 |
| <i>Affecting weather some (%)</i> | 27 | 23 | 25 | 26 | 22 | 25 | 25 | 21 |
| <i>Affecting weather a little (%)</i> | 5 | 6 | 6 | 5 | 7 | 6 | 6 | 6 |
| <i>Don't know/refused (%)</i> | 2 | 2 | 1 | 2 | 2 | 2 | 1 | 0 |
| <i>Prefer not to answer (%)</i> | 0 | 0 | 0 | 0 | 0 | 0 | 0 | 0 |
| Global warming is not affecting weather in the United States (%) | 5 | 6 | 5 | 6 | 7 | 6 | 5 | 8 |
| Global warming isn't happening (%) | 10 | 8 | 9 | 8 | 11 | 9 | 7 | 8 |
| Don't know (%) | 21 | 18 | 18 | 15 | 18 | 16 | 17 | 18 |
| Prefer not to answer/refused (%) | 5 | 5 | 7 | 5 | 5 | 5 | 5 | 3 |

(Base: Americans 18+)

How much do you agree or disagree with the following statement: Wildfires have increased around the world over the past few years as a result of global warming.

| | Oct 2017 | Mar 2018 | Dec 2018 | Apr 2019 | Nov 2019 | Apr 2020 | Dec 2020 |
|-----------------------|----------|----------|----------|----------|----------|----------|----------|
| (Unweighted Base) | 0 | 0 | 0 | 0 | 0 | 1,029 | 1,036 |
| Strongly disagree (%) | NaN | NaN | NaN | NaN | NaN | 15 | 16 |
| Somewhat disagree (%) | NaN | NaN | NaN | NaN | NaN | 18 | 18 |
| Somewhat agree (%) | NaN | NaN | NaN | NaN | NaN | 38 | 32 |
| Strongly agree (%) | NaN | NaN | NaN | NaN | NaN | 28 | 33 |
| Refused (%) | NaN | NaN | NaN | NaN | NaN | 0 | 0 |

(Base: Americans 18+)**Do you think global warming made each of the following worse or not?**

| | The record number of hurricanes and tropical storms that struck the U.S. Gulf Coast in the summer and fall of 2020 | The severe wind and thunderstorm (derecho) that caused record flooding in the Midwest in August 2020 | Wildfires in the western U.S. |
|-------------------|--|--|-------------------------------|
| (Unweighted Base) | 1,036 | 1,036 | 1,036 |
| Yes (%) | 55 | 49 | 54 |
| No (%) | 20 | 21 | 24 |
| Don't know (%) | 25 | 29 | 22 |
| Refused (%) | 1 | 1 | 1 |

(Base: Americans 18+)**How worried are you that the following might harm your local area?****Water pollution**

| | Mar 2018 | Dec 2018 | Apr 2019 | Nov 2019 | Apr 2020 | Dec 2020 |
|------------------------|----------|----------|----------|----------|----------|----------|
| (Unweighted Base) | 0 | 0 | 0 | 0 | 0 | 1,036 |
| Very worried (%) | NaN | NaN | NaN | NaN | NaN | 12 |
| Moderately worried (%) | NaN | NaN | NaN | NaN | NaN | 21 |
| A little worried (%) | NaN | NaN | NaN | NaN | NaN | 41 |
| Not at all worried (%) | NaN | NaN | NaN | NaN | NaN | 26 |
| Refused (%) | NaN | NaN | NaN | NaN | NaN | 0 |

Air pollution

| | Mar 2018 | Dec 2018 | Apr 2019 | Nov 2019 | Apr 2020 | Dec 2020 |
|------------------------|----------|----------|----------|----------|----------|----------|
| (Unweighted Base) | 0 | 0 | 0 | 0 | 0 | 1,036 |
| Very worried (%) | NaN | NaN | NaN | NaN | NaN | 12 |
| Moderately worried (%) | NaN | NaN | NaN | NaN | NaN | 24 |
| A little worried (%) | NaN | NaN | NaN | NaN | NaN | 37 |
| Not at all worried (%) | NaN | NaN | NaN | NaN | NaN | 26 |
| Refused (%) | NaN | NaN | NaN | NaN | NaN | 0 |

Extreme heat

| | Mar 2018 | Dec 2018 | Apr 2019 | Nov 2019 | Apr 2020 | Dec 2020 |
|------------------------|----------|----------|----------|----------|----------|----------|
| (Unweighted Base) | 1,278 | 1,114 | 1,291 | 1,303 | 1,029 | 1,036 |
| Very worried (%) | 13 | 11 | 13 | 14 | 12 | 11 |
| Moderately worried (%) | 21 | 21 | 23 | 22 | 22 | 21 |
| A little worried (%) | 29 | 29 | 34 | 28 | 32 | 33 |
| Not at all worried (%) | 36 | 39 | 30 | 36 | 33 | 35 |
| Refused (%) | 1 | 0 | 0 | 0 | 0 | 0 |

(Base: Americans 18+)**How worried are you that the following might harm your local area?****Drought**

| | Mar 2018 | Dec 2018 | Apr 2019 | Nov 2019 | Apr 2020 | Dec 2020 |
|------------------------|----------|----------|----------|----------|----------|----------|
| (Unweighted Base) | 1,278 | 1,114 | 1,291 | 1,303 | 1,029 | 1,036 |
| Very worried (%) | 11 | 10 | 10 | 11 | 9 | 10 |
| Moderately worried (%) | 19 | 17 | 21 | 20 | 17 | 18 |
| A little worried (%) | 31 | 31 | 34 | 30 | 39 | 36 |
| Not at all worried (%) | 39 | 42 | 35 | 39 | 35 | 36 |
| Refused (%) | 1 | 0 | 0 | 1 | 0 | 0 |

Agricultural pests and diseases

| | Mar 2018 | Dec 2018 | Apr 2019 | Nov 2019 | Apr 2020 | Dec 2020 |
|------------------------|----------|----------|----------|----------|----------|----------|
| (Unweighted Base) | 0 | 0 | 0 | 0 | 0 | 1,036 |
| Very worried (%) | NaN | NaN | NaN | NaN | NaN | 7 |
| Moderately worried (%) | NaN | NaN | NaN | NaN | NaN | 16 |
| A little worried (%) | NaN | NaN | NaN | NaN | NaN | 40 |
| Not at all worried (%) | NaN | NaN | NaN | NaN | NaN | 36 |
| Refused (%) | NaN | NaN | NaN | NaN | NaN | 0 |

Water shortages

| | Mar 2018 | Dec 2018 | Apr 2019 | Nov 2019 | Apr 2020 | Dec 2020 |
|------------------------|----------|----------|----------|----------|----------|----------|
| (Unweighted Base) | 1,278 | 1,114 | 1,291 | 1,303 | 1,029 | 1,036 |
| Very worried (%) | 9 | 8 | 10 | 9 | 10 | 9 |
| Moderately worried (%) | 17 | 14 | 17 | 18 | 15 | 15 |
| A little worried (%) | 25 | 29 | 31 | 27 | 31 | 30 |
| Not at all worried (%) | 48 | 49 | 41 | 45 | 44 | 45 |
| Refused (%) | 1 | 0 | 0 | 0 | 0 | 0 |

(Base: Americans 18+)**How worried are you that the following might harm your local area? (Cont'd)****Tornados**

| | Mar 2018 | Dec 2018 | Apr 2019 | Nov 2019 | Apr 2020 | Dec 2020 |
|------------------------|----------|----------|----------|----------|----------|----------|
| (Unweighted Base) | 0 | 0 | 0 | 0 | 0 | 1,036 |
| Very worried (%) | NaN | NaN | NaN | NaN | NaN | 7 |
| Moderately worried (%) | NaN | NaN | NaN | NaN | NaN | 16 |
| A little worried (%) | NaN | NaN | NaN | NaN | NaN | 30 |
| Not at all worried (%) | NaN | NaN | NaN | NaN | NaN | 46 |
| Refused (%) | NaN | NaN | NaN | NaN | NaN | 0 |

Flooding

| | Mar 2018 | Dec 2018 | Apr 2019 | Nov 2019 | Apr 2020 | Dec 2020 |
|------------------------|----------|----------|----------|----------|----------|----------|
| (Unweighted Base) | 1,278 | 1,114 | 1,291 | 1,303 | 1,029 | 1,036 |
| Very worried (%) | 7 | 6 | 9 | 9 | 6 | 7 |
| Moderately worried (%) | 22 | 17 | 19 | 19 | 17 | 12 |
| A little worried (%) | 31 | 38 | 32 | 30 | 37 | 33 |
| Not at all worried (%) | 39 | 39 | 40 | 41 | 40 | 47 |
| Refused (%) | 1 | 0 | 0 | 1 | 1 | 1 |

Wildfires

| | Mar 2018 | Dec 2018 | Apr 2019 | Nov 2019 | Apr 2020 | Dec 2020 |
|------------------------|----------|----------|----------|----------|----------|----------|
| (Unweighted Base) | 1,278 | 1,114 | 1,291 | 1,303 | 1,029 | 1,036 |
| Very worried (%) | 9 | 9 | 9 | 10 | 9 | 10 |
| Moderately worried (%) | 12 | 13 | 14 | 13 | 12 | 12 |
| A little worried (%) | 21 | 20 | 25 | 20 | 25 | 24 |
| Not at all worried (%) | 57 | 59 | 51 | 56 | 52 | 54 |
| Refused (%) | 1 | 0 | 0 | 0 | 1 | 0 |

(Base: Americans 18+)**How worried are you that the following might harm your local area? (Cont'd)****Rising sea levels**

| | Mar 2018 | Dec 2018 | Apr 2019 | Nov 2019 | Apr 2020 | Dec 2020 |
|------------------------|----------|----------|----------|----------|----------|----------|
| (Unweighted Base) | 0 | 0 | 0 | 0 | 0 | 1,036 |
| Very worried (%) | NaN | NaN | NaN | NaN | NaN | 6 |
| Moderately worried (%) | NaN | NaN | NaN | NaN | NaN | 10 |
| A little worried (%) | NaN | NaN | NaN | NaN | NaN | 22 |
| Not at all worried (%) | NaN | NaN | NaN | NaN | NaN | 61 |
| Refused (%) | NaN | NaN | NaN | NaN | NaN | 0 |

Hurricanes

| | Mar 2018 | Dec 2018 | Apr 2019 | Nov 2019 | Apr 2020 | Dec 2020 |
|------------------------|----------|----------|----------|----------|----------|----------|
| (Unweighted Base) | 1,278 | 1,114 | 1,291 | 1,303 | 1,029 | 1,036 |
| Very worried (%) | 9 | 8 | 9 | 9 | 8 | 8 |
| Moderately worried (%) | 12 | 12 | 14 | 13 | 13 | 12 |
| A little worried (%) | 17 | 20 | 16 | 18 | 20 | 19 |
| Not at all worried (%) | 62 | 59 | 60 | 59 | 58 | 61 |
| Refused (%) | 1 | 0 | 0 | 1 | 1 | 0 |

Reduced snowpack

| | Mar 2018 | Dec 2018 | Apr 2019 | Nov 2019 | Apr 2020 | Dec 2020 |
|------------------------|----------|----------|----------|----------|----------|----------|
| (Unweighted Base) | 1,278 | 1,114 | 1,291 | 1,303 | 1,029 | 1,036 |
| Very worried (%) | 5 | 5 | 4 | 5 | 5 | 6 |
| Moderately worried (%) | 10 | 11 | 10 | 12 | 10 | 12 |
| A little worried (%) | 16 | 21 | 19 | 20 | 23 | 18 |
| Not at all worried (%) | 68 | 63 | 66 | 62 | 62 | 64 |
| Refused (%) | 1 | 0 | 0 | 1 | 0 | 0 |

(Base: Americans 18+)**In your opinion, over the next 10 years how much risk does extreme weather pose to your community?**

| | Mar 2016 | Nov 2016 | May 2017 | Oct 2017 | Mar 2018 | Dec 2018 |
|-------------------|----------|----------|----------|----------|----------|----------|
| (Unweighted Base) | 1,204 | 0 | 0 | 1,304 | 0 | 0 |
| High risk (%) | 10 | NaN | NaN | 15 | NaN | NaN |
| Moderate risk (%) | 40 | NaN | NaN | 42 | NaN | NaN |
| Low risk (%) | 33 | NaN | NaN | 30 | NaN | NaN |
| No risk (%) | 5 | NaN | NaN | 5 | NaN | NaN |
| Don't know (%) | 11 | NaN | NaN | 8 | NaN | NaN |
| Refused (%) | 0 | NaN | NaN | 0 | NaN | NaN |

| | Apr 2019 | Nov 2019 | Apr 2020 | Dec 2020 |
|-------------------|----------|----------|----------|----------|
| (Unweighted Base) | 0 | 1,303 | 1,029 | 1,036 |
| High risk (%) | NaN | 18 | 16 | 13 |
| Moderate risk (%) | NaN | 38 | 40 | 42 |
| Low risk (%) | NaN | 31 | 33 | 34 |
| No risk (%) | NaN | 7 | 5 | 5 |
| Don't know (%) | NaN | 7 | 5 | 6 |
| Refused (%) | NaN | 0 | 0 | 0 |

10 Appendix II: Survey Method

The data in this report are based on a nationally representative survey of 1,036 American adults, aged 18 and older. The survey was conducted December 3 – 16, 2020. All questionnaires were self-administered by respondents in a web-based environment. The survey took, on average, 24 minutes to complete. The sample was drawn from the Ipsos (formerly GfK) KnowledgePanel®, an online panel of members drawn using probability sampling methods. Prospective members are recruited using a combination of random digit dial and address-based sampling techniques that cover virtually all (non-institutional) resident phone numbers and addresses in the United States. Those contacted who would choose to join the panel but do not have access to the Internet are loaned computers and given Internet access so they may participate.

The sample therefore includes a representative cross-section of American adults – irrespective of whether they have Internet access, use only a cell phone, etc. Key demographic variables were weighted, post survey, to match U.S. Census Bureau norms.

From November 2008 to December 2018, no KnowledgePanel® member participated in more than one *Climate Change in the American Mind* (CCAM) survey. Beginning with the April 2019 survey, panel members who have participated in CCAM surveys in the past, excluding the most recent two surveys, may be randomly selected for participation. In the current survey, 265 respondents participated in a previous CCAM survey.

The survey instrument was designed by Anthony Leiserowitz, Seth Rosenthal, Jennifer Carman, Matthew Goldberg, Karine Lacroix, and Jennifer Marlon of Yale University, and Edward Maibach and John Kotcher of George Mason University. The automated report was designed by Xinran Wang and Jennifer Carman of Yale University, Parrish Bergquist of Georgetown University, and Matto Mildemberger of the University of California, Santa Barbara.

Sample details and margins of error

All samples are subject to some degree of sampling error – that is, statistical results obtained from a sample can be expected to differ somewhat from results that would be obtained if every member of the target population were interviewed. Average margins of error for each wave, at the 95% confidence level, are plus or minus 3 percentage points except where noted.

- December 2020: Fielded December 3 – 16 ($n = 1,036$)
 - April 2020: Fielded April 7 – 17 ($n = 1,029$)
 - November 2019: Fielded November 8 – November 20 ($n = 1,303$)
 - April 2019: Fielded March 29 – April 8 ($n = 1,291$)
 - December 2018: Fielded November 28 – December 11 ($n = 1,114$)
 - March 2018: Fielded March 7 – March 24 ($n = 1,278$)
 - October 2017: Fielded October 20 – November 1 ($n = 1,304$)
 - May 2017: Fielded May 18 – June 6 ($n = 1,266$)
 - November 2016: Fielded November 18 – December 1 ($n = 1,226$)
 - March 2016: Fielded March 18 – 31 ($n = 1,204$)
 - October 2015: Fielded September 30 – October 19 ($n = 1,330$)
 - March 2015: Fielded February 27 – March 10 ($n = 1,263$)
 - October 2014: Fielded October 17 – 28 ($n = 1,275$)
 - April 2014: Fielded April 15 – 22 ($n = 1,013$)
 - November 2013: Fielded November 23 – December 9 ($n = 830$)
 - April 2013: Fielded April 10 – 15 ($n = 1,045$)
 - September 2012: Fielded August 31 – September 12 ($n = 1,061$)
 - March 2012: Fielded March 12 – March 30 ($n = 1,008$)
 - November 2011: Fielded October 20 – November 16 ($n = 1,000$)
 - May 2011: Fielded April 23 – May 12 ($n = 1,010$)
 - June 2010: Fielded May 14 – June 1 ($n = 1,024$)
 - January 2010: Fielded December 24, 2009 – January 3, 2010 ($n = 1,001$).
 - November 2008: Fielded October 7 – November 12 ($n = 2,164$).
- Data were collected over two periods: from October 7 – October 20 and from October 24 – November 12. Margin of error plus or minus 2 percentage points.

Rounding error

For tabulation purposes, percentage points are rounded to the nearest whole number. As a result, percentages in a given chart may total slightly higher or lower than 100%. Summed response categories (e.g., “strongly agree” + “somewhat agree”) are rounded after sums are calculated (e.g., $25.3\% + 25.3\% = 50.6\%$, which, after rounding, would be reported as $25\% + 25\% = 51\%$).

11 Appendix III: Sample Demographics

| | <i>n</i> (unweighted) | % (weighted) |
|-----------------------------|-----------------------|--------------|
| Total | 1,036 | 100 |
| Male | 498 | 48 |
| Female | 538 | 52 |
| iGen (1997 -) | 41 | 7 |
| Millennials (1981 - 1996) | 234 | 29 |
| Generation X (1965 - 1980) | 239 | 25 |
| Baby Boomers (1946 - 1964) | 418 | 31 |
| Silent (1928 - 1945) | 104 | 7 |
| Less than high school | 53 | 11 |
| High school | 280 | 27 |
| Some college | 269 | 30 |
| Bachelor's degree or higher | 434 | 31 |
| <\$25K | 92 | 11 |
| \$25K-<\$50K | 165 | 18 |
| \$50K-<\$75K | 185 | 18 |
| \$75K-<\$100K | 138 | 14 |
| \$100K-<\$125K | 116 | 11 |
| \$125K+ | 331 | 28 |
| White, Non-Hispanic | 732 | 63 |
| Black, Non-Hispanic | 101 | 12 |
| Hispanic | 117 | 16 |
| 2+ Races, Non-Hispanic | 32 | 2 |
| Other, Non-Hispanic | 54 | 7 |
| Northeast | 174 | 17 |
| Midwest | 238 | 21 |
| South | 381 | 38 |
| West | 243 | 24 |

Yale SCHOOL OF
THE ENVIRONMENT

GEORGE MASON UNIVERSITY
CENTER *for* CLIMATE CHANGE COMMUNICATION

